

Roanoke Valley Area
METROPOLITAN PLANNING ORGANIZATION



**TRANSPORTATION
IMPROVEMENT
PROGRAM**



for the
**ROANOKE VALLEY AREA
METROPOLITAN PLANNING ORGANIZATION**

**Federal Fiscal Years 2015-2018
APPROVED: _____**

Amended _____

Adjusted _____



RVAMPO FY 2015-18 Transportation Improvement Program (TIP)

Table of Contents

1.0	Purpose of the TIP	2
2.0	Public and Stakeholder Involvement	3
3.0	Understanding the TIP	3
4.0	Funding the TIP	5
4.1	Funding Sources	6
4.2	Financial Assumptions	12
4.3	Metropolitan Project Selection Overview	12
5.0	Transit Projects	13
5.1	Summary of Transit Funding	13
6.0	Roadway Projects	16
6.1	Bedford County	17
6.2	Botetourt County	17
6.3	Montgomery County	18
6.4	Roanoke County	18
6.5	City of Roanoke	19
6.6	City of Salem	20
6.7	Town of Vinton	20
6.8	Salem District-wide	21
6.9	Statewide	21
APPENDIX A - Grouped Projects		
APPENDIX B - Ungrouped Projects		
APPENDIX C - Resolution Approving Final TIP 2015-2018 and Self-Certification Statement		
APPENDIX D - Amendments		
APPENDIX E - Adjustments		

Acknowledgement

This report was prepared by the Roanoke Valley-Alleghany Regional Commission (RVARC) staff in cooperation with and assistance by: the Federal Highway Administration (FHWA), Federal Transit Administration (FTA), Virginia Department of Rail and Public Transportation (DRPT), Virginia Department of Transportation (VDOT), Roanoke Valley Area Metropolitan Planning Organization (RVAMPO) member localities, Greater Roanoke Transit Company (GRTC/Valley Metro), and RADAR (Roanoke Area Dial A Ride).

Disclaimer

The contents of this report reflect the views of the Roanoke Valley Area Metropolitan Planning Organization. The RVARC staff is responsible for the facts and the accuracy of the data presented herein. The contents do not necessarily reflect the official views or policies of the FHWA, FTA, VDOT, DRPT, Valley Metro, RADAR, or the RVARC. This report does not constitute a standard, specification or regulation. FHWA, FTA, VDOT and DRPT acceptance of this report as evidence of fulfillment of the objectives of this program does not constitute endorsement/approval of the need for any recommended improvements nor does it constitute approval of their location and design or a commitment to fund any such improvements. Additional project level environmental impact assessments and/or studies of alternatives may be necessary.

The data presented in this report is provided by VDOT, DRPT, GRTC and RADAR; and the data is compiled and presented by RVARC staff.

Roanoke Valley Area Metropolitan Planning Organization MPO Policy Board Membership – as of March 2014

VOTING MEMBERS

The Honorable Bill Thomasson

Bedford County

The Honorable Billy Martin, Sr., Chair
Ron Smith

Botetourt County
Botetourt County

The Honorable Al Bedrosian
The Honorable Charlotte Moore
(Alternate: The Honorable Jason Peters)

Roanoke County
Roanoke County

The Honorable Annette Perkins
(Alternate: The Honorable Gary Creed)

Montgomery County

The Honorable Ray Ferris
Dr. M. Rupert Cutler

City of Roanoke
City of Roanoke

The Honorable Jane Johnson, Vice Chair
Melinda Payne

City of Salem
City of Salem

The Honorable Doug Adams
Thomas Rotenberry

Town of Vinton
Town of Vinton

Carl Palmer
(Alternate: Kevin Price)

Greater Roanoke Transit Company (Valley Metro)

Efren Gonzalez
(Alternate: Diana Lewis)

Roanoke Regional Airport Commission

J. Lee E. Osborne

Roanoke Valley- Alleghany Regional Commission

Michael Todd

Virginia Department of Rail and Public Transportation

Rob Cary, P.E.
(Alternate: Tommy DiGiulian)

Virginia Department of Transportation–Salem District

NON-VOTING MEMBERS

Tammye Davis
Tony Cho

Federal Highway Administration
Federal Transit Administration

MPO SECRETARY

Wayne G. Strickland,
RVARC Executive Director

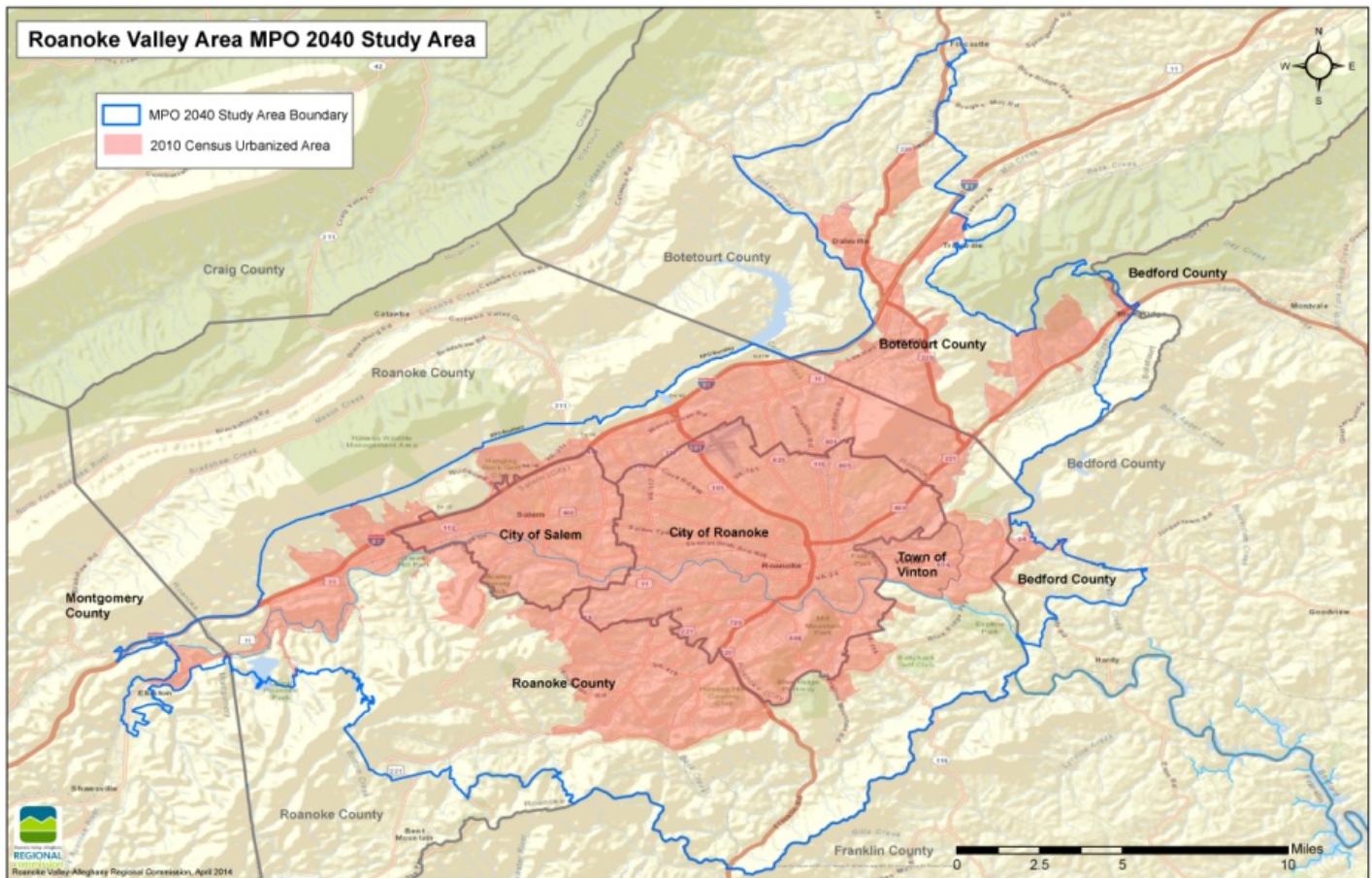
PROJECT STAFF

Bryan W. Hill, Transportation Planner I
Cristina D. Finch, Regional Planner III
Mark McCaskill, Senior Planner
Jackie Pace, Office Manager

1.0 Purpose of the TIP

The Transportation Improvement Program (TIP) is a document that identifies how federal funds will be used for transportation projects in the Roanoke Valley's urbanized area over a four-year timeframe. All transportation projects identified in the TIP must be consistent with the Long Range Transportation Plan (LRTP), which generally spans a 25-year timeframe.

The Roanoke Valley Area Metropolitan Planning Organization (MPO) is an organization required to exist by federal law (§23 CFR Part 450), which mandates that urbanized areas with a population greater than 50,000 persons establish an MPO to facilitate transportation planning. The Roanoke Valley MPO area includes the urbanized portions of Bedford, Botetourt, Montgomery and Roanoke Counties, as well as the Cities of Roanoke and Salem, and the Town of Vinton. Staff at the Roanoke Valley Area MPO (RVAMPO) developed this TIP for the MPO area shown in the below map.



The RVAMPO TIP was developed in cooperation with the Virginia Department of Transportation, the Virginia Department of Rail and Public Transportation, local public transportation operators, and the local governments within the urbanized area. These officials, through the Metropolitan Planning Process, select and schedule projects that they support for endorsement in the TIP. The Transportation Improvement Program is endorsed annually by the MPO Policy Board and may be modified by amendments and adjustments at any time.

2.0 Public and Stakeholder Involvement

In accordance with the MPO's Public Involvement Policy, the public has been afforded several opportunities to comment upon the development of the TIP. These opportunities are listed below:

1. Electronic access and updates to the Draft FY2015-2018 TIP through the RVAMPO website at www.rvarc.org and hard copies at the Roanoke Valley-Alleghany Regional Commission offices at 313 Luck Avenue, SW, Roanoke, VA 24016;
2. A 45-day comment period where the public can submit comments on the Draft FY2015-18 TIP via e-mail, online comment form, regular mail, telephone and facsimile; and
3. Newspaper advertisements in the Roanoke Times and Roanoke Tribune, notifying the public of a public hearing on the adoption of the TIP on June 26, 2014.

The Comprehensive, Continuing, Cooperative (3-C) process of the MPO, provides a natural mechanism by which the TIP can be carefully reviewed and updated annually. Annual development of this program helps to clarify future needs, allow revisions to accommodate changing conditions, and allow developing local and regional plans to be continually incorporated.

The Technical Advisory Committee to the MPO (known as the Transportation Technical Committee or TTC) is made up of representatives from local, state, and federal agencies. The TTC provides the professional expertise necessary to derive a plan and ensure that all local and regional interests are considered. Once the program is developed, the MPO Policy Board reviews and approves the program according to policies adopted by the local governments. With few exceptions, any proposed transportation project should be included in the TIP to be considered eligible for federal funding. All phases of a project including preliminary engineering, right-of-way acquisitions, and construction should be documented in the TIP.

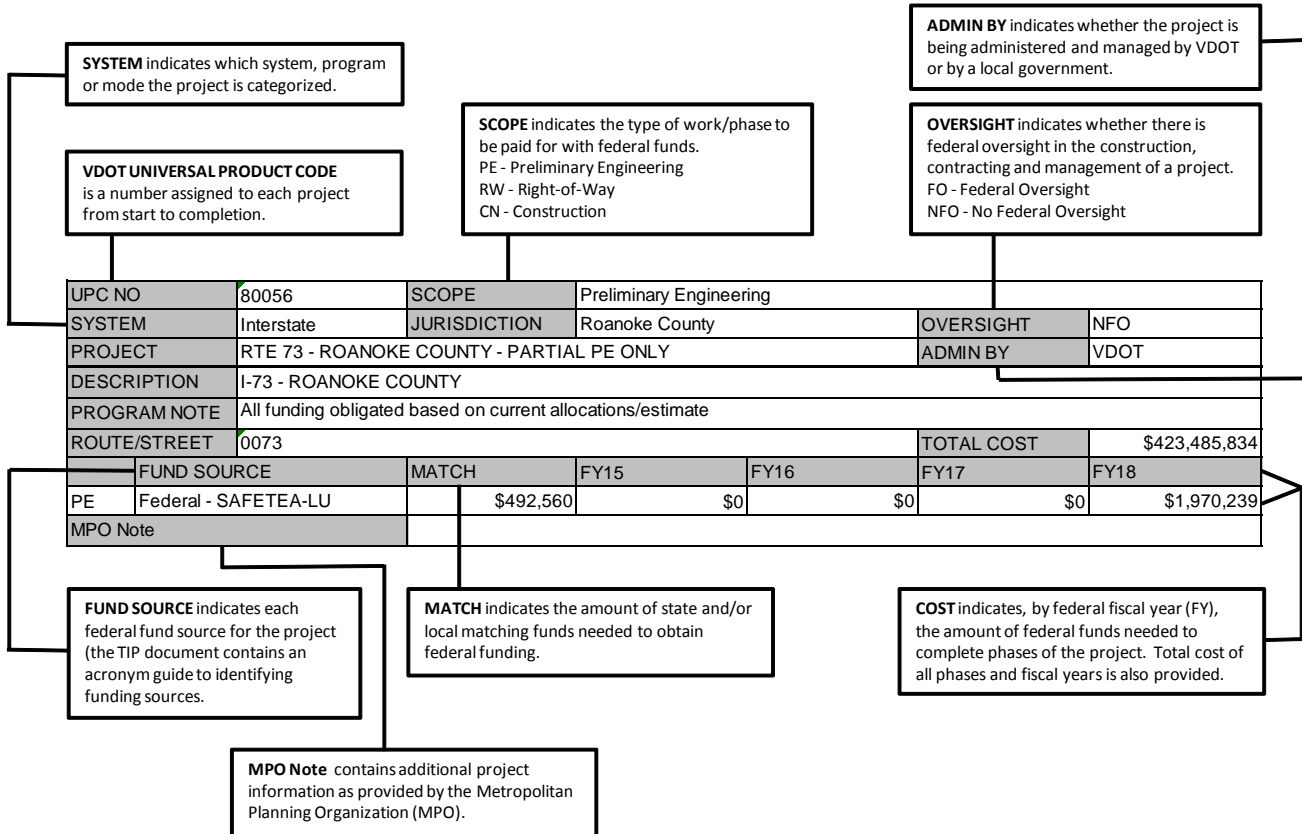
3.0 Understanding the TIP

The Transportation Improvement Program identifies capital projects anticipated to receive federal funding over a four-year period during federal fiscal years 2015 through 2018 (October 1, 2015 to September 30, 2018). Projects that are funded only through state or local sources are not included. Once approved, the TIP is incorporated into the State Transportation Improvement Program (STIP).

Some projects in the TIP are identified as individual projects whereas others are grouped together and shown as a single item. Projects are summarized by jurisdiction in Section 4.0 and listed independently in Appendix A, Grouped Projects and Appendix B, Ungrouped Projects. In Appendix A, the tables entitled "Project Groupings" contains aggregated funding information for projects within a similar funding category such as bridge construction, rail, safety improvements, trails, and operations. The diagram below explains the type of detailed information provided for individually listed projects in Appendix B.

Diagram of Transit Project Information

Diagram of Highway Project Information



The project “system” referred to in the diagram above is described below in Table 1.

Table 1: Project System

System	Description
Interstate	The Interstate System contains projects identified as being part of the limited-access system of highways which carry route designations such as I-81 and I-64.
Primary Roads	The Primary System contains projects located along major roadways which carry a route designation of less than 600. Projects listed in this category are primarily located within counties and are listed in numerical order by route number without regard to jurisdiction.
Secondary Roads	The Secondary System contains projects located along minor roadways which carry a route designation of 600 or greater. Projects listed in this category are primarily located within counties and are listed in numerical order by route number without regard to jurisdiction.
Urban Roads	The Urban System contains projects located within cities and towns. Projects are organized by jurisdiction and listed by street name.
Miscellaneous	Miscellaneous Projects are regional in nature and are not associated with one of the previous Systems.
Rail Safety	Rail safety projects include those related to safety such as gates, flashing lights, etc. at railroad crossings.
Transportation Enhancement	Transportation enhancement projects include improvements to safety and aesthetics.
Public Transit Projects	The Public Transportation section contains the operating and capital funding for Valley Metro and RADAR, the two public transit operators in the MPO area.

4.0 Funding the TIP

§23 CFR 450.324(h) specifies the inclusion of a financial plan in the TIP that shows how the identified projects or project phases can reasonably be expected to be implemented, with the available public and private revenues. TIP projects or project phases are required to be consistent with the LRTP and must be fully funded in the TIP. To the extent that funding is available or shall be reasonably available, priority projects or project phases have been cooperatively selected for inclusion in this TIP. VDOT, DRPT, Valley Metro, RADAR and the MPO developed financial forecasts for the TIP based on the latest official planning assumptions and estimates of revenues and costs. The financial information is given by funding category for the projects listed and expected to be implemented during the four-year period beginning Fiscal Year 2015.

Some projects listed in the TIP may show \$0 for planned obligations. There are several reasons this may occur and include:

- The project is complete and awaiting closeout
- Subsequent project phases are beyond the four-year TIP cycle
- Informational purposes only, funding being pursued
- The project is to be funded from [category] group funding

In addition to construction projects, financial projections have also been made to show revenues for maintaining and operating the region's highway and transit systems during the same 4-year period. Funded TIP actions typically include, but are not limited to:

- Transportation studies
- Ground transportation system improvement projects (fixed-guide, highway, bicycle, pedestrian, commuter lots, etc)
- Public transit systems and services, including the components of coordinated human service mobility plans
- System maintenance (monitoring, repair and/or replacement of system facilities and support sites; snow removal; mowing; painting; rest area or weigh station sites; etc)
- System operations (ITS-TSM applications; traffic operations such as signalization, signal coordination, ramp meters, or message signs; roadside assistance; incident management; for the urbanized TMAs, their Congestion Management Process activities; VDOT traffic management centers; bridge-tunnel management; toll road or congestion pricing management; etc)

4.1 Funding Sources

The TIP funding summary tables (Table 2) summarize by year and by funding source the revenue amounts estimated and committed for fiscal years 2015-2018. The table includes expenditures and estimated revenues expected for each funding source and show that the program is financially constrained by year. The financial summary tables are based on total funds available, which include annual allocations of funds including any State and local matching dollars. These revenue sources are all reasonably expected to be made available and committed to the project phase during the programmed year of the TIP.

Table 2 will be handed out at the meeting and included in the second draft document.

**TABLE C : Roanoke MPO
FEDERAL FUNDING CATEGORIES
FISCAL CONSTRAINT BY YEAR**
Highway Projects
FFY 2015 - 2018

Fund Source	FFY 2015		FFY 2016		FFY 2017		FFY 2018		TOTAL	
	Projected Obligation Authority	Planned Obligation	Projected Obligation Authority	Planned Obligation	Projected Obligation Authority	Planned Obligation	Projected Obligation Authority	Planned Obligation	Projected Obligation Authority	Planned Obligation
Federal										
ARRA	(\$3,557,808)	(\$3,557,808)	\$0	\$0	\$0	\$0	\$0	\$0	(\$3,557,808)	(\$3,557,808)
BR/BROS	\$2,629,290	\$2,629,290	\$4,414,549	\$4,414,549	\$31,899	\$31,899	\$0	\$0	\$7,075,738	\$7,075,738
DEMO	(\$410,848)	(\$410,848)	\$0	\$0	\$0	\$0	\$0	\$0	(\$410,848)	(\$410,848)
EB/MG	\$717,406	\$717,406	\$1,095,050	\$1,095,050	\$0	\$0	\$0	\$0	\$1,812,456	\$1,812,456
EN	(\$571,618)	(\$571,618)	\$0	\$0	\$0	\$0	\$0	\$0	(\$571,618)	(\$571,618)
IM	\$177,563	\$177,563	\$0	\$0	\$0	\$0	\$0	\$0	\$177,563	\$177,563
NHPP	\$1,469,226	\$1,469,226	\$9,625,885	\$9,625,885	\$4,386,052	\$4,386,052	\$0	\$0	\$15,481,163	\$15,481,163
NHS	\$262,151	\$262,151	\$0	\$0	\$0	\$0	\$0	\$0	\$262,151	\$262,151
RSTP (2)	\$2,825,213	\$2,825,213	\$5,973,235	\$5,973,235	\$5,466,576	\$5,466,576	\$5,311,305	\$5,311,305	\$19,576,329	\$19,576,329
SAFETEA-LU	\$0	\$0	\$0	\$0	\$0	\$0	\$1,970,239	\$1,970,239	\$1,970,239	\$1,970,239
STP	\$5,539,646	\$5,539,646	\$3,081,056	\$3,081,056	\$1,683,170	\$1,683,170	\$0	\$0	\$10,303,872	\$10,303,872
TAP	\$280,537	\$280,537	\$600,425	\$600,425	\$0	\$0	\$0	\$0	\$880,962	\$880,962
Subtotal -- Federal	\$9,360,758	\$9,360,758	\$24,790,200	\$24,790,200	\$11,567,697	\$11,567,697	\$7,281,544	\$7,281,544	\$53,000,199	\$53,000,199
Other										
Non-Federal	(\$1,654,164)	(\$1,654,164)	\$0	\$0	\$0	\$0	\$0	\$0	(\$1,654,164)	(\$1,654,164)
State Match	\$1,846,080	\$1,846,080	\$2,863,480	\$2,863,480	\$1,580,735	\$1,580,735	\$1,820,386	\$1,820,386	\$8,110,681	\$8,110,681
Subtotal -- Other	\$191,916	\$191,916	\$2,863,480	\$2,863,480	\$1,580,735	\$1,580,735	\$1,820,386	\$1,820,386	\$6,456,517	\$6,456,517
Total	\$9,552,674	\$9,552,674	\$27,653,680	\$27,653,680	\$13,148,432	\$13,148,432	\$9,101,930	\$9,101,930	\$59,456,716	\$59,456,716

Federal - ACC (1)										
HSIP	\$271,123	\$271,123	\$0	\$0	\$0	\$0	\$0	\$0	\$271,123	\$271,123
BR	\$1,137,837	\$1,137,837	\$0	\$0	\$6,866,882	\$6,866,882	\$0	\$0	\$8,004,719	\$8,004,719
MG/EB	\$36,290	\$36,290	\$0	\$0	\$0	\$0	\$0	\$0	\$36,290	\$36,290
NHPP	\$24,077,485	\$24,077,485	\$3,193,397	\$3,193,397	\$0	\$0	\$0	\$0	\$27,270,882	\$27,270,882
RSTP (2)	\$616,480	\$616,480	\$0	\$0	\$0	\$0	\$0	\$0	\$616,480	\$616,480
STP	\$573,646	\$573,646	\$407,497	\$407,497	\$5,240,545	\$5,240,545	\$557,827	\$557,827	\$6,779,515	\$6,779,515
Subtotal -- Federal - ACC (1)	\$26,712,861	\$26,712,861	\$3,600,894	\$3,600,894	\$12,107,427	\$12,107,427	\$557,827	\$557,827	\$42,979,009	\$42,979,009

Maintenance - Federal (5)										
BR/BROS	\$1,753,772	\$1,753,772	\$1,753,772	\$1,753,772	\$1,753,772	\$1,753,772	\$1,753,772	\$1,753,772	\$7,015,088	\$7,015,088
STP	\$16,842,875	\$16,842,875	\$15,813,826	\$15,813,826	\$13,204,207	\$13,204,207	\$14,857,018	\$14,857,018	\$60,717,926	\$60,717,926
Subtotal -- Maintenance - Federal (5)	\$18,596,647	\$18,596,647	\$17,567,598	\$17,567,598	\$14,957,979	\$14,957,979	\$16,610,790	\$16,610,790	\$67,733,014	\$67,733,014

- (1) ACC -- Advance Construction -- Funding Included in Federal Category based on year of AC Conversion.
- (2) CMAQ / RSTP includes funds for TRANSIT projects.
- (3) Multiple MPO Category - Funding to be obligated in Multiple MPO Regions.
- (4) Statewide Category - Funding to be obligated Statewide for projects as identified.
- (5) Maintenance Projects - Funding to be obligated for maintenance projects as identified.

The following information provides an overview of the most common funding programs utilized in the development of the TIP.

Transit Funding Programs:

- Section 5307** Federal Transit Administration formula grants for transit capital and operating assistance in urbanized areas.
- Section 5309** Federal Transit Administration discretionary grant funding for capital assistance for major bus related construction or equipment projects.
- Section 5310** Federal Transit Administration funds for private and non-profit organizations providing mass transportation services for the elderly and disabled.
- Section 5316** Federal Transit Administration funds for Job Access and Reverse Commute grants to provide low-income individuals job access transportation.
- Non-Federal** Any funding that does not come from federal sources is grouped into the non-federal funding category.
- RSTP** Regional Surface Transportation Program (RSTP) the Surface Transportation Program (STP) provides federal funding that may be used by states and localities for a wide range of highway and transit projects. RSTP funds are STP funds that are apportioned to specific regions within a state. The Roanoke Valley Area MPO Policy Board is responsible for scoring and awarding RSTP funds for MPO candidate projects.

Highway Funding Programs:

- AC** ***Advance Construction Funds*** Advance construction can be used to fund emergency relief efforts and for any project listed in the Statewide TIP, including surface transportation, interstate, bridge, and safety projects. As with any Federal-aid project, to remain eligible for reimbursement, the agency must be able to meet project funding requirements to complete the project and follow all other Federal requirements as the project advances.
- AC Conversion** ***AC Conversion*** refers to the repayment of Advance Construction Funds.
- ARRA** ***American Recovery and Reinvestment Act of 2009*** provides federal funds to invest in transportation and other infrastructure projects that will provide long-term economic benefits, preserving and creating jobs and promoting economic recovery.
- BR/BROS** ***Bridge Rehabilitation and Replacement*** program provides funding for bridge improvements. Eligibility for funding is based on a rating of bridge condition by VDOT as a candidate for upgrading.
- DEMO** ***Federal Demonstration Funds*** are included in federal transportation acts include demonstration, priority, pilot, or special interest projects in various Federal-aid highway and appropriations acts. These projects are generically referred to as "demonstration" or "demo" projects, because Congress initiated this practice of providing special funding for these projects to demonstrate some new or innovative construction, financing, or other techniques on specific projects.

EB/MG	The Equity Bonus (formerly known as Minimum Guarantee) ensures that each State receives a specific share of the aggregate funding for major highway programs (Interstate Maintenance, National Highway System, Bridge, Surface Transportation Program, Highway Safety Improvement Program, Congestion Mitigation and Air Quality Improvement, Metropolitan Planning, Appalachian Development Highway System, Recreational Trails, Safe Routes to School, Rail-Highway Grade Crossing, Coordinated Border Infrastructure programs, and Equity Bonus itself, along with High Priority Projects), with every State guaranteed at least a specified percentage of that State's share of contributions to the Highway Account of the Highway Trust Fund.
EN	Transportation Enhancement Funds are now known as the Transportation Alternatives Program (see below).
HES	Hazard Elimination Funds are contingent upon VDOT conducting and maintaining engineering surveys of all public roads to identify hazardous locations, sections, and elements, which may constitute a danger to motorists, bicyclists. VDOT may also develop and implement projects and programs to address the hazards. Federal funds are available for expenditure on: any public road; any public surface transportation facility or any publicly owned bicycle or pedestrian pathway or trail; or any traffic calming measure.
HPD	TEA-21 High Priority Funds are federal funds made available to carry out high priority projects as set forth in the Transportation Efficiency Act for the 21 st Century (TEA-21) legislation.
HSIP	Highway Safety Improvement Program
IM	Interstate Maintenance (IM) program provides reconstruction, maintenance, and improvements to the National System of Interstate and Defense Highways. The Commonwealth Transportation Board (CTB) administers these programs.
NH	National Highway System (NHS) projects can be funded only if they are on the National Highway System, which is established by Congress.
NHPP	National Highway Performance Program (NHPP) provides support for the condition and performance of the National Highway System (NHS), for the construction of new facilities on the NHS, and to ensure that investments of federal-aid funds in highway construction are directed to support progress toward the achievement of performance targets established in VDOT's asset management plan for the NHS.
RSTP	Regional Surface Transportation Program (RSTP) the Surface Transportation Program (STP) provides federal funding that may be used by states and localities for a wide range of highway and transit projects. RSTP funds are STP funds that are apportioned to specific regions within a state. The Roanoke Valley Area MPO Policy Board is responsible for scoring and awarding RSTP funds for MPO candidate projects.
SAFETEA-LU	The Safe Accountable, Flexible, Efficient Transportation Equity Act: A Legacy for Users (SAFETEA-LU) is the federal transportation bill that provides federal transportation funding to each state. The SAFETEA-LU funding category refers to funding earmarks that Congress included in the legislation for specific projects. This funding can only be used for the project(s) for which it is earmarked.

STP *Surface Transportation Program* (STP) can be utilized on any project located on a roadway that is classified higher than a minor collector. Projects eligible for funding under this program include construction, reconstruction, and rehabilitation, and bridge projects on any public road. Local STP funds are designated as L-STP.

Non-Federal Any funding that does not come from federal sources is grouped into the non-federal funding category.

SRS *Safe Routes to School* is a competitive grant program to enable and encourage children to safely walk and bicycle to school. Funds can be used for infrastructure improvements and educational programs.

TAP *Transportation Alternatives Program* funds have been made available for bicycle and pedestrian facilities through MAP-21. The Transportation Alternatives Program redefines the former Transportation Enhancement (TE) Program and consolidates these eligibilities with the Safe Routes to School and Recreational Trails program eligibilities. The program is intended to help local sponsors fund community based projects that expand travel choices and enhance the transportation experience by improving the cultural, historical and environmental aspects of the transportation infrastructure. The program does not fund traditional roadway projects or provide maintenance for these facilities. Instead it focuses on providing for pedestrian and bicycle facilities, community improvements and mitigating the negative impacts of the highway system. Projects with EN have previous Transportation Enhancement funds attached to them.

The following table lists the acronyms for all potential funding sources.

Table 3: Acronyms for Funding Sources

AC	Advance Construction	ID	Interstate Discretionary
APD	Appalachian Development	IM	Interstate Maintenance
AD	Defense Access	IMG	Interstate Maintenance Grade Crossing
BOND	Bond Issue	IR	Interstate 4R
BR	Bridge Replacement	IX	Interstate Substitution
BROS	Bridge (off federal system)	M	Urbanized
BH	Bridge Rehabilitation	MG	Minimum Guarantee
CM	Congestion Mitigation & Air Quality	MR	Maintenance Replacement
DEMO	Demonstration	NH	National Highway
EB	Equity Bonus	OC	Open Container
EN	Enhancement	RO	Repeat Offender
F	Consolidated Primary	S	State
FR	Federal Reimbursement Grant Repayment	SRTS	Safe Routes to School
FHWA	Federal Highway Administration	STP	Surface Transportation Program
FTA	Federal Transit Administration	TB	Timber Bridge
HES	Hazard Elimination	TFRA	Toll Facilities Revolving Account
HPD	Highway Priority Demonstration	RRP	Rail Highway Protective Devices
HSIP	Highway Safety Improvement Program	RRS	Rail Highway Grade Separation
I	Interstate	VTA	Virginia Transportation Act of 2000

4.2 Financial Assumptions

The TIP financial plan is federally required to include only committed and/or reasonably available transportation funding sources. The estimates on funding sources and costs are based on reasonable financial principles and recent information. The financial estimates for both revenues and costs are given in year of expenditure dollars, and reflect growth and inflation factors. VDOT costs estimates are from the VDOT Project Cost Estimating System. For projects not administered by the state, cost estimates are developed cooperatively through the MPO or responsible local government. Maintenance and construction program financial planning assumptions used for the FY 2015 – FY 2018 TIP are consistent with assumptions and distribution methodology used for the 2035 LRTP.

4.3 Metropolitan Project Selection Overview

In metropolitan planning areas, transportation projects selected for federal funding in the TIP must be consistent with the approved Constrained Long-Range Transportation Plan (CLRTP). In addition, the State Transportation Improvement Program (STIP) submitted by the Commonwealth Transportation Board (CTB) to FTA and FHWA must be consistent with all the metropolitan TIPs.

Within this regulatory framework of metropolitan cooperation, the CTB has lead responsibility for selecting and programming federally funded Interstate Maintenance, Bridge, National Highway System, Statewide (non-metropolitan) STP, Safety, Enhancement, and certain FTA Section 5310 projects. Local governments have lead responsibility for selecting projects within the urban and secondary roadway systems. The CTB adopts the Six-Year Program on an annual basis. The Six-Year Program (SYP) includes the Six-Year Improvement Program (SYIP) and the Secondary Six-Year Program (SSYP). These programs are developed by evaluation of existing and future needs based upon statewide and regional plans and projections, priorities for implementation of the transportation plan, and public comment on transportation priorities. Projects listed in the Six-Year Program are updated to reflect the latest revenue estimates, project costs, changes in priorities, and federal and state laws. Criteria used in selecting proposed projects and in developing project priorities include:

- Conformance to the MPO adopted transportation plan and study area local governments/agencies plans and programs;
- MAP-21 planning factors;
- Provision of funding for previously programmed projects in need of additional funds;
- Comments received as part of the MPO Public Involvement Process.

5.0 Transit Projects

Funding for the Greater Roanoke Transit Company (GRTC/Valley Metro) and for RADAR (Unified Human Services Transportation Systems, Inc.) from federal and other sources for FY 2015-2018 is presented in the program of projects below.

5.1 Summary of Transit Funding

Greater Roanoke Transit Company	Previous Funding	FY 2015	FY 2016	FY 2017	FY 2018	Total FY 2015-2018	
FTA 5307	-	2,498	2,498	2,498	2,498	FTA 5307	9,992
FTA 5310	-	-	-	-	-	FTA 5310	-
FTA 5311	-	348	348	348	348	FTA 5311	1,392
FTA 5314	-	-	-	-	-	FTA 5314	-
FTA 5339	-	80	202	416	176	FTA 5339	874
JARC	-	-	-	-	-	JARC	-
New Freedom	-	-	-	-	-	New Freedom	-
Flexible STP	-	-	-	-	-	Flexible STP	-
Other Federal	-	-	-	-	-	Other Federal	-
State	172	1,913	1,922	1,949	1,919	State	7,703
Local	-	2,513	2,534	2,561	2,531	Local	10,139
Revenues	-	2,373	2,373	2,373	2,373	Revenues	9,492
CMAQ	-	-	-	-	-	CMAQ	-
RSTP	688	-	-	-	-	RSTP	-
Totals	860	9,725	9,877	10,145	9,845		39,592
RADAR - UHSTS, Inc. Roanoke County							
	Previous Funding	FY 2015	FY 2016	FY 2017	FY 2018	Total FY 2015-2018	
FTA 5307	-	-	-	-	-	FTA 5307	-
FTA 5310	-	189	189	189	189	FTA 5310	756
FTA 5311	-	-	-	-	-	FTA 5311	-
FTA 5314	-	-	-	-	-	FTA 5314	-
FTA 5339	-	-	-	-	-	FTA 5339	-
JARC	-	208	66	-	-	JARC	274
New Freedom	-	-	-	-	-	New Freedom	-
Flexible STP	-	-	-	-	-	Flexible STP	-
Other Federal	-	-	-	-	-	Other Federal	-
State	-	68	68	68	68	State	272
Local	-	250	109	43	43	Local	445
Revenues	-	24	24	9	9	Revenues	66
CMAQ	-	-	-	-	-	CMAQ	-
RSTP	-	-	-	-	-	RSTP	-
Totals	-	739	456	309	309		1,813
Roanoke Valley MPO							
	Previous Funding	FY 2015	FY 2016	FY 2017	FY 2018	Total FY 2015-2018	
FTA 5307	-	2,498	2,498	2,498	2,498	FTA 5307	9,992
FTA 5310	-	189	189	189	189	FTA 5310	756
FTA 5311	-	348	348	348	348	FTA 5311	1,392
FTA 5314	-	-	-	-	-	FTA 5314	-
FTA 5339	-	80	202	416	176	FTA 5339	874
JARC	-	208	66	-	-	JARC	274
New Freedom	-	-	-	-	-	New Freedom	-
Flexible STP	-	-	-	-	-	Flexible STP	-
Other Federal	-	-	-	-	-	Other Federal	-
State	172	1,981	1,990	2,017	1,987	State	7,975
Local	-	2,763	2,643	2,604	2,574	Local	10,584
Revenues	-	2,397	2,397	2,382	2,382	Revenues	9,558
CMAQ	-	-	-	-	-	CMAQ	-
RSTP	688	-	-	-	-	RSTP	-
Totals	860	10,464	10,333	10,454	10,154		41,405

Funding Source	Previous Funding	FY 2015	FY 2016	FY 2017	FY 2018	Total FY 2015-2018
ROANOKE VALLEY AREA METROPOLITAN PLANNING ORGANIZATION						
STIP ID: GRT0001		Title: Operating Assistance			Recipient: Greater Roanoke Transit Company	
FTA 5307		1,874	1,874	1,874	1,874	FTA 5307 7,496
FTA 5311		348	348	348	348	FTA 5311 1,392
State		1,892	1,892	1,892	1,892	State 7,568
Local		2,359	2,359	2,359	2,359	Local 9,436
Revenues		2,373	2,373	2,373	2,373	Revenues 9,492
Year Total:	-	8,846	8,846	8,846	8,846	Total Funds: 35,384
Description:	Includes Fixed-Routes, SmartWay and SmartWay Connector Bus					
STIP ID: GRT0002		Title: Preventative Maintenance			Recipient: Greater Roanoke Transit Company	
FTA 5307		599	599	599	599	FTA 5307 2,396
State						State -
Local		149	149	149	149	Local 596
Year Total:	-	748	748	748	748	Total Funds: 2,992
Description:						
STIP ID: GRT0003		Title: Assoc.Transit Improvements			Recipient: Greater Roanoke Transit Company	
FTA 5307		25	25	25	25	FTA 5307 100
State		5	5	5	5	State 20
Local		1	1	1	1	Local 4
Year Total:	-	31	31	31	31	Total Funds: 124
Description:						
STIP ID: GRT0004		Title: Replacement Bus			Recipient: Greater Roanoke Transit Company	
FTA 5339				288		FTA 5339 288
RSTP	448					RSTP -
State	112			36		State 36
Local				36		Local 36
Year Total:	560	-	-	360	-	Total Funds: 360
Description:	Replace STAR paratransit vehicles. Previous funding to replace one SmartWay bus.					
STIP ID: GRT0005		Title: Expansion Bus			Recipient: Greater Roanoke Transit Company	
FTA 5339						FTA 5339 -
State						State -
Local						Local -
Year Total:	-	-	-	-	-	Total Funds: -
Description:						
STIP ID: GRT0006		Title: Support Vehicles			Recipient: Greater Roanoke Transit Company	
FTA 5339			24			FTA 5339 24
State			3			State 3
Local			3			Local 3
Year Total:	-	-	30	-	-	Total Funds: 30
Description:						
STIP ID: GRT0007		Title: Purchase Bus Shelters			Recipient: Greater Roanoke Transit Company	
FTA 5339			80	80	80	FTA 5339 240
State			10	10	10	State 30
Local			10	10	10	Local 30
Year Total:	-	-	100	100	100	Total Funds: 300
Description:						
STIP ID: GRT0008		Title: Rehab/Renovation of Admin/Maint Building			Recipient: Greater Roanoke Transit Company	
FTA 5339					80	FTA 5339 80
State					10	State 10
Local					10	Local 10
Year Total:	-	-	-	-	100	Total Funds: 100
Description:						
STIP ID: GRT0009		Title: New Const./Renovation of Downtown Roanoke Multimodal Transfer Facility			Recipient: Greater Roanoke Transit Company	
FTA 5339						FTA 5339 -
RSTP	240					RSTP -
State	60					State -
Local						Local -
Year Total:	300	-	-	-	-	Total Funds: -
Description:	Previous funding for Amtrak Station/Bus Transfer Facility Study.					
STIP ID: GRT0010		Title: ADP Hardware			Recipient: Greater Roanoke Transit Company	
FTA 5339			72			FTA 5339 72
State			9			State 9
Local			9			Local 9
Year Total:	-	-	90	-	-	Total Funds: 90
Description:						

STIP ID: GRT0011		Title: ADP Software		Recipient: Greater Roanoke Transit Company			
FTA 5339			16			FTA 5339	16
State			2			State	2
Local			2			Local	2
Year Total:	-	-	20	-	-	Total Funds:	20
Description:							
STIP ID: GRT0012		Title: Shop Equipment		Recipient: Greater Roanoke Transit Company			
FTA 5339			10	24	16	FTA 5339	50
State			1	3	2	State	6
Local			1	3	2	Local	6
Year Total:	-	-	12	30	20	Total Funds:	62
Description:							
STIP ID: GRT0013		Title: Purchase Radios		Recipient: Greater Roanoke Transit Company			
FTA 5339		80				FTA 5339	80
State		16				State	16
Local		4				Local	4
Year Total:	-	100	-	-	-	Total Funds:	100
Description:							
STIP ID: GRT0014		Title: Purchase Route Signage		Recipient: Greater Roanoke Transit Company			
FTA 5339	-			24		FTA 5339	24
State	-			3		State	3
Local	-			3		Local	3
Year Total:	-	-	-	30	-	Total Funds:	30
Description:							
STIP ID: RAD0001		Title: Operating Assistance (Former		Recipient: RADAR - UHSTS, Inc. Roanoke County			
JARC		208	66			JARC	274
State						State	-
Local		207	66			Local	273
Revenues		15	15			Revenues	30
Year Total:	-	430	147	-	-	Total Funds:	577
Description: CORTRAN operating assistance							
STIP ID: RAD0002		Title: Operating Assistance (Former New Freedom Program)		Recipient: RADAR - UHSTS, Inc. Roanoke County			
FTA 5310		85	85	85	85	FTA 5310	340
State		68	68	68	68	State	272
Local		17	17	17	17	Local	68
Revenues		9	9	9	9	Revenues	36
Year Total:	-	179	179	179	179	Total Funds:	716
Description: STAR (Valley Metro), CORTRAN (Roanoke County) operating assistance and Local Office on Aging taxi voucher assistance							
STIP ID: RAD0003		Title: Paratransit Vehicles		Recipient: RADAR - UHSTS, Inc. Roanoke County			
FTA 5310		104	104	104	104	FTA 5310	416
State						State	-
Local		26	26	26	26	Local	104
Year Total:	-	130	130	130	130	Total Funds:	520
Description: Replacement vehicles (2) per year.							

6.0 Roadway Projects

This section summarizes the TIP roadway projects. An overall map of the TIP projects is shown below. More detailed project information is provided in Appendices A and B.

MAP WILL BE INCLUDED IN SECOND DRAFT

The tables below list the TIP projects by locality. Note the following explanations for the project groupings:

Grouped (BR/R/R) = (Bridge Rehabilitation/Replacement/Reconstruction)

Grouped (S/ITS/OI) = (Safety/Intelligent Transportation Systems/Operational Improvements)

Grouped (TE/B/Non-T) = (Transportation Enhancement/Byway/Non-Traditional)

Grouped (Maint. & Syst. Pres.) = (Preventive Maintenance and System Preservation)

Grouped (Maint. Bridges) = (Preventive Maintenance for Bridges)

Grouped (Maint. Traf. & Safety Op) = (Maintenance of Traffic and Safety Operations)

6.1 Bedford County

System	Jurisdiction	UPC	Project	Description	Total Cost	TIP 12-15	TIP 15-18
Grouped (BR/R/R)-Secondary	Bedford	62650	Rte. 634 - Hardy Ford Bridge Replacement (Smith Mtn. Lake)	FROM: At Franklin/Bedford County line TO: (Goes with IDS 58885 & 58890)	\$8,913,977	no	yes

6.2 Botetourt County

System	Jurisdiction	UPC	Project	Description	Total Cost	TIP 12-15	TIP 15-18
Grouped (BR/R/R)-Interstate	Botetourt	97577	Rt 11 Bridge STR# 3212	Rte 81 - NBL Bridge Replace over Rte 11 STR #3212	\$4,622,664	yes	yes
Grouped (BR/R/R)-Primary	Botetourt	77300	Rt 11 - Replace structure over Tinker Creek (STR#1012)	0.15 MILE EAST ROUTE 1039 (0.0700 MI)	\$4,666,065	yes	yes
Grouped (BR/R/R)-Primary	Botetourt	77302	Rt 11 - Replace structure over Tinker Creek (STR#1013)	Bridge Replacement w/o Added Capacity	\$3,992,457	yes	yes
Grouped (BR/R/R)-Primary	Botetourt	78329	Rte. 11 - Bridge replacement over Firestone Creek (STR #1007)	Bridge Replacement w/o Added Capacity	\$3,341,324	no	yes
Grouped (BR/R/R)-Secondary	Botetourt	103930	ARRA-C Salem District Culvert Replacements - Botetourt Co. Child UPC linked to 103931	0.03 Mi. East of Route 1532 TO: 0.03 Mi. West of Route 1534 (0.0500 MI)	\$80,411	no	yes
Grouped (BR/R/R)-Secondary	Botetourt	103931	ARRA-C Salem District Culvert Replacements - Botetourt Co. Parent UPC linked to 103930	0.03 Mi. East of Route 1532 TO: 0.03 Mi. West of Route 1534 (0.0500 MI)	\$181,022	no	yes
Grouped (BR/R/R)-Secondary	Botetourt	90086	Rt 738 - Bridge replacement (STR#6142 and 6143)	Bridge replacement over Glade Creek w/o added capacity	\$5,026,945	yes	yes
Grouped (BR/R/R)-Secondary	Botetourt	52803	Rt 779 (Catawba Road) - Intersection improvements & Bridge over Tinker Creek	Reconstruction without added capacity	\$8,012,776	yes	yes
Grouped (S/ITS/OI)-Interstate	Botetourt	75910	ROUTE 11,220,220A ACCESS MANAGEMENT PROJECT AT I-81 EXIT 150	Relocation	\$46,749,850	yes	yes
Grouped (S/ITS/OI)-Interstate	Botetourt	92691	ARRA Botetourt I-81 Undersealing/Paving/Guardrail Upgrades. Parent UPC linked to 103847.	FROM: Rte. 779 Bridge TO: Rte. 640 Bridge (9.6400 MI)	\$18,973,279	yes	yes
Grouped (S/ITS/OI)-Interstate	Botetourt	103847	Undersealing/Paving/Guardrail upgrades. Child UPC linked to UPC 92691. All funding obligated based on current allocations/estimate.	FROM: Rte. 779 Bridge TO: Rte. 640 Bridge (9.6400 MI)	\$1,400,000	no	yes
Grouped (S/ITS/OI)-Interstate	Botetourt	104048	FY13-14 VMS Installation: I-81	FROM: NB at MM at 147.5 to MM 172.0	\$610,000	no	yes
Grouped (TE/B/Non-T)-Miscellaneous	Botetourt	105021	BOTETOURET AND ROANOKE CO GREENWAY CONNECTIVITY STUDY	FROM: AT AND RTE 76 TO: AT AND RTE 76 (10.0000 MI)	\$85,000	no	yes

6.3 Montgomery County

No projects are currently listed in the TIP for the portion of Montgomery County in the Roanoke Valley urbanized area.

6.4 Roanoke County

System	Jurisdiction	UPC	Project	Description	Total Cost	TIP 12-15	TIP 15-18
Interstate	Roanoke Co.	80056	Rt 73 - Partial PE only	I-73 - Roanoke County	\$423,485,834	yes	yes
Grouped (BR/R/R)-Interstate	Roanoke Co.	97560	Rte I-81 NBL Bridge Replace. over Rte 581 SW & NW Ramps	FROM: Route 81 NBL Bridge Replacement Str. #2018 TO: over Route 581 NW & SW Ramps	\$10,497,749	yes	yes
Grouped (BR/R/R)-Interstate	Roanoke Co.	97576	RTE 81 SBL - Bridge Replace over Rte. 112 Wildwood STR#14865	FROM: south of Route 112 Wildwood Bridge TO: north of Route 112 Wildwood Bridge	\$6,256,011	yes	yes
Grouped (BR/R/R)-Interstate	Roanoke Co.	97578	I-81 NBL - Bridge Replacement over Rte. 642 Alleghany STR#14867	FROM: south of bridge over Rte 642 Alleghany Drive TO: north of bridge over Rte 642 Alleghany Drive	\$3,504,624	no	yes
Grouped (BR/R/R)-Primary	Roanoke Co.	77305	Rt 116 - Bridge replacement over Back Creek	0.10 mile north Rt 939 (0.24 mi)	\$5,895,838	yes	yes
Grouped (BR/R/R)-Primary	Roanoke Co.	82193	Rt 220 - Bridge over Back Creek - STR#1039	FROM: 4.45 mi Rt 419 TO: 3.68 mi Franklin County Line	\$12,985,497	yes	yes
Grouped (BR/R/R)-Primary	Roanoke Co.	94726	Bridge Replacement - Route 221 over Martins Creek	0.01 mi. S Int. Rte. 696	\$3,726,138	no	yes
Grouped (BR/R/R)-Secondary	Roanoke Co.	17221	Rte. 779 - Approaches & Bridge over branch of Catawba Creek	FROM: 0.09 mi. West Rte. 320 TO: 0.08 mi. East Rte. 320 (0.1670 mi.)	\$2,195,884	no	yes
Grouped (S/ITS/OI)-Interstate	Roanoke Co.	99542	I-81 Exit 140 Park 'N Ride Facility Expansion	FROM: Exit 140 TO: off Rte. 1150 Edgebrook Rd.	\$1,608,244	no	yes
Grouped (S/ITS/OI)-Interstate	Roanoke Co.	104047	I-81 FY13-14 Fiber Redundancy Connection	FROM: Exit 140 TO: Exit 141 (1.0000 mi.)	\$46,679	no	yes
Grouped (S/ITS/OI)-Interstate	Roanoke Co.	100660	RTE 220A - Install Flashing Beacons on signs	FROM: Alt Rte 220 (Cloverdale Rd) TO: US 460 (Challenger Avenue NE)	\$50,564	no	yes
Grouped (S/ITS/OI)-Primary	Roanoke Co.	98386	Rt 220 (Franklin Road) Replace signal at Wal-mart	Intersection of Rt.220 and Wal-mart	\$332,336	yes	yes
Grouped (S/ITS/OI)-Primary	Roanoke Co.	98390	RTE 221 Signal Upgrade at RTE 682	FROM: Route 221 TO: Route 682	\$322,950	no	yes
Grouped (S/ITS/OI)-Secondary	Roanoke Co.	15187	Rt 1662 (McVitty Rd.) - Rt. 1662 - Reconstruction & Replace bridge over Mud Lick Creek	FROM: Int. of Rt 1663 TO: Intersection of Rt 419 (0.468 mi)	\$14,207,299	yes	yes
Grouped (S/ITS/OI)-Secondary	Roanoke Co.	15188	RTE 1663 - RECONSTRUCT; DRAINAGE STRUCT/BRANCH MUD LICK CK	FROM: SOUTH INT. ROUTE 221 TO: INT. OF ROUTE 1662 (0.283 MI)	\$2,869,476	no	yes
Grouped (S/ITS/OI)-Secondary	Roanoke Co.	15190	Rt 688 (Cotton Hill Rd.) - Reconstruction	FROM: 0.09 mi south Rt 221 TO: 0.15 mi south Rt. 934 (0.61 mi)	\$7,128,818	yes	yes
Grouped (TE/B/Non-T)-Enhancement	Roanoke Co.	91191	RNKE RIVER GRNWAY - CITY OF ROANOKE TO BLUE RIDGE PARKWAY	FROM: City of Roanoke Limit TO: Blue Ridge Parkway/Explore Park	\$6,824,090	yes	yes
Grouped (TE/B/Non-T)-Enhancement	Roanoke Co.	97171	ROANOKE CO, ROANOKE RIVER GRNWAY, GREEN HILL PK TO MILL LN	Landscaping and Beautification	\$6,489,926	yes	yes
Grouped (TE/B/Non-T)-Enhancement	Roanoke Co.	103495	Low Water Bridge for HRB Trail. Child project linked to UPC 17578	Near Int. Rtes. 419 and 311.	\$287,977	no	yes
Grouped (TE/B/Non-T)-Enhancement	Roanoke Co.	103607	Roanoke Co., Plantation Road Streetscape Improvements	FROM: Interstate 81 TO: Williamson Road (Route 11) (0.9500 MI)	\$5,297,128	no	yes
Grouped (TE/B/Non-T)-Primary	Roanoke Co.	99143	Roanoke River Parkway Environmental Remediation	FROM: Blue Ridge Parkway (0.24 Mi N Rte. 618 Underpass) TO: 1.80 Mi. E. Blue Ridge Parkway (1.8000 MI)	\$150,000	no	yes

6.5 City of Roanoke

System	Jurisdiction	UPC	Project	Description	Total Cost	TIP 12-15	TIP 15-18
Interstate	City of Roanoke	16595	Rt 581 - Valley View Interchange Phase II	Reconstruction with added capacity	\$63,909,490	yes	yes
Urban	City of Roanoke	688	13th Street and Hollins Road	Reconstruction with added capacity	\$56,523,233	yes	yes
Grouped (S/ITS/OI)-Interstate	City of Roanoke	94089	ARRA Rt 581 - at Elm Ave. (Design-Build) Parent UPC linked to UPC 97231	FROM: Exit Ramps accessing Elm Ave. TO: 0.016 Mi.W. WilliamsonRd.-0.045 Mi. E. 4TH ST., SE ON ELM AVE (0.2240 MI)	\$19,446,796	yes	yes
Grouped (S/ITS/OI)-Interstate	City of Roanoke	97231	ARRA Rt 581 - at Elm Ave. (Design-Build) Child UPC linked to UPC 94089	FROM: Exit Ramps accessing Elm Ave. TO: 0.016 Mi.W. WilliamsonRd.-0.045 Mi. E. 4TH ST., SE ON ELM AVE (0.2240 MI)	\$3,443,137	no	yes
Grouped (S/ITS/OI)-Primary	City of Roanoke	100659	RTE 460 - Upgrade Traffic Signal at 13th Street	FROM: Route 460 TO: 13th Street	\$344,993	no	yes
Grouped (S/ITS/OI)-Urban	City of Roanoke	80558	RTE. U000 - CORRIDOR IMPROVEMENTS ON HERSHBERGER ROAD	Safety improvements	\$1,175,425	yes	yes
Grouped (S/ITS/OI)-Urban	City of Roanoke	80561	Develop Orange Avenue to Urban 6 Lanes - PE Only	FROM: 0.006 MI. W. INT. 11TH ST., N.E. TO: 0.232 MI. E. INT. GUS W. NICKS BLVD., N.E.	\$49,527,479	yes	yes
Grouped (S/ITS/OI)-Urban	City of Roanoke	95178	US 460 (Orange Ave.) - US 460/Blue Hills E/WB LT lanes and signal	FROM: US460 @ Blue HillsDr & TO: Mexico Way (0.2500 MI)	\$438,900	yes	yes
Grouped (S/ITS/OI)-Urban	City of Roanoke	71741	Riverland Road - Intersection Improvement	FROM: 0.021 Mi. West of Int. with Garden City Blvd. TO: 0.161 Mi. East of Int. with Bennington Street	\$7,991,814	yes	yes
Grouped (S/ITS/OI)-Miscellaneous	City of Roanoke	102856	City of Roanoke - SRTS - Garden City ES - Sidewalks, etc.	FROM: Yellow Mountain Road TO: Ivywood Street (0.4200 MI)	\$1,050,000	no	yes
Grouped (S/ITS/OI)-Miscellaneous	City of Roanoke	105019	Downtown Roanoke Signal Coordination	FROM: Roanoke TO: Roanoke	\$1,500,000	no	yes
Grouped (S/ITS/OI)-Miscellaneous	City of Roanoke	105022	Street resurfacing in various vital arterials	FROM: Various TO: Various (4.4100 mi.)	\$3,500,000	no	yes
Grouped (TE/B/Non-T)-Enhancement	City of Roanoke	103345	RR Grnwy-Bike/Ped b/t Vic Thomas/Ghent Hill Parks. Child UPC linked to UPC 72180	FROM: Vic Thomas Park TO: Ghent Hill Park (0.2500 MI)	\$0	no	yes
Grouped (TE/B/Non-T)-Enhancement	City of Roanoke	103592	Virginian Railway Station Restoration Phase 2. Child UPC linked to UPC 78217	Historic Preservation	\$500,000	no	yes
Grouped (TE/B/Non-T)-Urban	City of Roanoke	72180	City of Roanoke - Roanoke River Greenway	WITHIN THE CITY OF ROANOKE LIMITS (0.0000 MI)	\$2,953,449	yes	yes
Grouped (TE/B/Non-T)-Primary	City of Roanoke	78217	REHABILITATION OF VIRGINIAN RAILWAY STATION. Parent UPC link to UPC 103592	Historic Preservation	\$760,000	no	yes
Grouped (TE/B/Non-T)-Miscellaneous	City of Roanoke	102769	ROANOKE RIVER GREENWAY (Aerial Way Dr to Salem) - FY13 RS	FROM: Aerial Way Drive TO: SALEM CITY LIMITS (1.0000 MI)	\$5,863,800	no	yes
Grouped (TE/B/Non-T)-Miscellaneous	City of Roanoke	105015	Downtown Roanoke Multimodal Transportation Study	FROM: Roanoke TO: Roanoke	\$300,000	no	yes
Grouped (TE/B/Non-T)-Miscellaneous	City of Roanoke	105020	Tinker Creek Greenway Corridor Planning Study	FROM: Roanoke TO: Roanoke	\$250,000	no	yes

6.6 City of Salem

System	Jurisdiction	UPC	Project	Description	Total Cost	TIP 12-15	TIP 15-18
Urban	City of Salem	52076	Rt 11 - Apperson Dr - Intersection Improvements	At Route 419 (Electric Road) 0.3000 mi.	\$36,569,924	yes	yes
Grouped (BR/R/R)-Urban	City of Salem	78751	Rt 11 (Colorado St.) Bridge replacement	Colorado Street over Roanoke River	\$4,657,075	yes	yes
Grouped (S/ITS/OI)-Primary	City of Salem	100656	Construct sidewalk on west side of Route 419	FROM: Rotary Park TO: City Limits (0.4300 mi.)	\$543,201	no	yes
Grouped (S/ITS/OI)-Urban	City of Salem	8753	RTE 460 - WIDEN TO 3 LANES WITH CURB & SIDEWALK	Reconstruction without added capacity	\$38,217,193	yes	yes
Grouped (S/ITS/OI)-Urban	City of Salem	97199	Safe Routes to School Project - Lewis MS - Sidewalks	FROM: 4th and S. College Avenue TO: 4th and Delaware St. (0.1090 mi.)	\$56,989	yes	yes
Grouped (TE/B/Non-T)-Enhancement	City of Salem	101838	Bridge on Phase 3A City of Salem Roanoke River Greenway. Child project linked to UPC 56409	FROM: approximately 1200' E. Mill Lane TO: Eddy St.	\$0	no	yes
Grouped (TE/B/Non-T)-Urban	City of Salem	56409	Construction of 7 mile bicycle/pedestrian. Parent UPC linked to Child UPCs 101838 & 105206.	FROM: Western limits of Green Hill Park, Roanoke County TO: Eastern corporate limits of City of Salem (7.0000 MI)	\$1,950,763	yes	yes
Grouped (TE/B/Non-T)-Urban	City of Salem	72658	Mason Creek Greenway - 5 mile bicycle/pedestrian trail	FROM: Roanoke Boulevard TO: Lynchburg Turnpike (0.9800 MI)	\$1,242,625	yes	yes
Grouped (TE/B/Non-T)-Urban	City of Salem	105206	Apperson Dr Rte. 11 Bridge - Sidewalk Expansion (Ph 4 RRG). Child UPC linked to UPC 56409	FROM: East Riverside Drive TO: Electric Road Rte. 419 (0.0600 MI)	\$657,000	no	yes

6.7 Town of Vinton

System	Jurisdiction	UPC	Project	Description	Total Cost	TIP 12-15	TIP 15-18
Grouped (BR/R/R)-Urban	Town of Vinton	76677	Replace Bridges and Approaches over Glade Creek	FROM: 0.098 Miles West of 5th St. TO: 0.052 Miles East of 5th St.	\$3,428,077	yes	yes
Grouped (S/ITS/OI)-Urban	Town of Vinton	93160	RTE. U000 - WALNUT AVE. INT. IMPROVEMENT AT 8TH ST.	Walnut Avenue and 8th Street Intersection improvements	\$2,334,931	yes	yes
Grouped (S/ITS/OI)-Urban	Town of Vinton	105213	Rte.U000 - Walnut Ave Ph. 1 - SW, Stripe, Xwalks & Landscape. Child UPC linked to 93160.	FROM: 5th St. TO: W. Lee Ave.	\$100,000	no	yes
Grouped (TE/B/Non-T)-Miscellaneous	Town of Vinton	105017	Glade/Tinker Creek Greenway Bridge	From: Vinton To: Vinton	\$1,800,000	no	yes

6.8 Salem District-wide

System	Jurisdiction	UPC	Project	Description	Total Cost	TIP 12-15	TIP 15-18
Interstate	Salem District-wide	16596	RTE 73 - PROPOSED CORRIDOR LOCATION ALIGNMENT - PE ONLY	FROM: ROANOKE TO: NORTH CAROLINA STATE LINE	\$10,000,000	yes	yes
Grouped (BR/R/R)-Secondary	Salem District-wide	92700	ARRA Salem District 2009 Design Build-Culverts (Waiting financial closure)	FROM: District-wide TO: District-wide	\$103,357	yes	yes
Grouped (S/ITS/OI)-Interstate	Salem District-wide	103689	FY13 Marking Task #5 - Salem District I-81 & I-77	FROM: Interstate 81 (MM 87.4 - 174.3) TO: Interstate 77 (MM 0 - 24.3)	\$143,826	no	yes
Grouped (S/ITS/OI)-Interstate	Salem District-wide	103828	I-81 Pavement Rehabilitation	FROM: Various TO: Various (6.6600 mi.)	\$9,312,213	no	yes
Grouped (S/ITS/OI)-Interstate	Salem District-wide	104046	Rtes. I-77 & I-81 - FY14-15 Replace Signs	FROM: Interstate 77 TO: Interstate 81	\$792,587	no	yes
Grouped (S/ITS/OI)-Miscellaneous	Salem District-wide	104672	VARIOUS RTES. - Install Flashing Yellow Arrows District-wide	FROM: various routes districtwide TO: various routes districtwide	\$512,000	no	yes
Grouped (TE/B/Non-T)-Rail	Salem District-wide	105014	Impacts of Freight Intermodal Center-Trans & Econ-Study	FROM: Roanoke TO: Roanoke	\$200,000	no	yes

6.9 Statewide

No projects are currently listed in the TIP for Statewide projects located partially within the Roanoke Valley urbanized area.

APPENDIX A - Grouped Projects

Roanoke MPO Project Groupings

GROUPING		Construction : Bridge Rehabilitation/Replacement/Reconstruction					
ROUTE/STREET						TOTAL COST	\$102,088,888
	FUND SOURCE	MATCH	FY15	FY16	FY17	FY18	
PE	Federal - AC CONVERSION	\$0	\$479,766	\$0	\$0	\$0	\$0
	Federal - BR	\$5,484	\$21,934	\$0	\$0	\$0	\$0
	Federal - HSIP	\$0	\$164,037	\$0	\$0	\$0	\$0
PE TOTAL		\$5,484	\$665,737	\$0	\$0	\$0	\$0
PE AC	Federal - AC	\$0	\$1,186,812	\$0	\$0	\$0	\$0
RW	Federal - ARRA	\$0	(\$35,801)	\$0	\$0	\$0	\$0
	Federal - BR	\$7,257	\$942,358	\$0	\$0	\$0	\$0
	Federal - HSIP	\$0	\$417,473	\$0	\$0	\$0	\$0
	Federal - STP/F	\$81,907	\$185,231	\$0	\$0	\$0	\$0
RW TOTAL		\$89,163	\$1,509,261	\$0	\$0	\$0	\$0
RW AC	Federal - AC	\$0	\$2,973	\$0	\$0	\$0	\$0
CN	Federal - AC CONVERSION	\$0	\$658,071	\$0	\$6,866,882	\$0	\$0
	Federal - BR	\$17,503	\$38,273	\$4,414,549	\$31,899	\$0	\$0
	Federal - EB	\$0	\$0	\$590,444	\$0	\$0	\$0
	Federal - HSIP	\$0	\$2,035,592	\$0	\$0	\$0	\$0
	Federal - NHPP	\$0	\$0	\$9,625,885	\$4,386,052	\$0	\$0
	Federal - STP/F	\$44,475	\$104,335	\$414,486	\$1,683,170	\$0	\$0
	Federal - STP/R	(\$127)	(\$509)	\$0	\$0	\$0	\$0
	Other	\$0	(\$113,959)	\$0	\$0	\$0	\$0
CN TOTAL		\$61,851	\$2,721,803	\$15,045,364	\$12,968,003	\$0	\$0
CN AC	Federal - AC	\$45,317	\$9,462,383	\$29,058,770	\$0	\$0	\$0
MPO Note							

Roanoke MPO
Project Groupings

GROUPING		Construction : Safety/ITS/Operational Improvements					
ROUTE/STREET						TOTAL COST	
						\$187,981,129	
	FUND SOURCE	MATCH	FY15	FY16	FY17	FY18	
PE	Federal - AC CONVERSION	\$81,025	\$0	\$0	\$0	\$324,101	
	Federal - HSIP	(\$7,753)	(\$69,777)	\$0	\$0	\$0	
	Federal - RSTP	\$60,000	\$0	\$0	\$240,000	\$0	
	Federal - STP/F	\$35,632	\$142,528	\$0	\$0	\$0	
	Federal - STP/HES	\$1,017	\$9,157	\$0	\$0	\$0	
	Federal - STP/SRS	\$0	\$277,829	\$0	\$0	\$0	
	Federal - STP/SU	(\$97,844)	(\$396,786)	\$0	\$0	\$0	
	Other	\$0	(\$103,596)	\$0	\$0	\$0	
PE TOTAL		\$72,078	(\$140,645)	\$0	\$240,000	\$324,101	
PE AC	Federal - AC	\$81,025	\$4,708,372	\$0	\$0	\$0	
RW	Federal - AC CONVERSION	\$145,420	\$0	\$154,710	\$193,244	\$233,726	
	Federal - BR	(\$256)	(\$1,023)	\$0	\$0	\$0	
	Federal - EB	\$126,152	\$0	\$504,606	\$0	\$0	
	Federal - RSTP	\$104,400	\$0	\$0	\$417,600	\$0	
	Federal - STP/F	\$666,643	\$47,010	\$2,666,570	\$0	\$0	
	Federal - STP/SU	(\$8,099)	(\$32,396)	\$0	\$0	\$0	
RW TOTAL		\$1,034,259	\$13,591	\$3,325,886	\$610,844	\$233,726	
RW AC	Federal - AC	\$145,420	\$6,163,509	\$0	\$0	\$0	
CN	Federal - AC CONVERSION	\$140,865	\$329,008	\$3,049,323	\$252,787	\$0	
	Federal - ARRA	\$0	(\$3,522,007)	\$0	\$0	\$0	
	Federal - EB	\$26,598	\$106,393	\$0	\$0	\$0	
	Federal - HSIP	\$45,531	\$893,105	\$0	\$0	\$0	
	Federal - IM	\$19,729	\$177,563	\$0	\$0	\$0	
	Federal - NH	\$70,542	\$282,166	\$0	\$0	\$0	
	Federal - NHPP	(\$16,141)	(\$64,562)	\$0	\$0	\$0	
	Federal - RSTP	\$1,570,310	\$0	\$80,000	\$1,157,936	\$5,043,305	
	Federal - STP/F	\$217,022	\$868,086	\$0	\$0	\$0	
	Federal - STP/HES	\$31,296	\$281,664	\$0	\$0	\$0	
	Federal - STP/R	(\$100,686)	(\$402,742)	\$0	\$0	\$0	
	Federal - STP/SRS	\$0	\$167,073	\$0	\$0	\$0	
CN TOTAL		\$2,005,066	(\$884,253)	\$3,129,323	\$1,410,723	\$5,043,305	
CN AC	Federal - AC	\$126,394	\$3,745,715	\$0	\$0	\$0	
MPO Note							

GROUPING		Construction : Transportation Enhancement/Byway/Non-Traditional					
ROUTE/STREET						TOTAL COST	
						\$35,611,758	
	FUND SOURCE	MATCH	FY15	FY16	FY17	FY18	
PE	Federal - AC CONVERSION	\$73,000	\$292,000	\$0	\$0	\$0	
	Federal - DEMO	(\$92,307)	(\$579,279)	\$0	\$0	\$0	
	Federal - RSTP	\$155,500	\$274,000	\$80,000	\$0	\$268,000	
	Federal - STP/EN	(\$120,310)	(\$481,240)	\$0	\$0	\$0	
	Other	\$0	(\$333,558)	\$0	\$0	\$0	
PE TOTAL		\$15,883	(\$828,077)	\$80,000	\$0	\$268,000	
PE AC	Federal - AC	\$0	\$345,000	\$0	\$0	\$0	
RW	Federal - RSTP	\$209,560	\$718,240	\$0	\$120,000	\$0	
	Federal - STP/F	\$3,000	\$12,000	\$0	\$0	\$0	
	Federal - TAP/F	\$51,134	\$204,537	\$0	\$0	\$0	
RW TOTAL		\$263,694	\$934,777	\$0	\$120,000	\$0	
CN	Federal - AC CONVERSION	\$219,133	\$876,531	\$0	\$0	\$0	
	Federal - DEMO	\$92,307	\$369,227	\$0	\$0	\$0	
	Federal - RSTP	\$2,758,721	\$1,690,608	\$5,813,235	\$3,531,040	\$0	
	Federal - STP/EN	(\$22,595)	(\$90,379)	\$0	\$0	\$0	
	Federal - TAP/F	\$169,106	\$76,000	\$600,425	\$0	\$0	
CN TOTAL		\$3,216,672	\$2,921,987	\$6,413,660	\$3,531,040	\$0	
CN AC	Federal - AC	\$0	\$4,518,060	\$576,654	\$2,655,000	\$0	
MPO Note							

Roanoke MPO Project Groupings

GROUPING		Maintenance : Preventive Maintenance and System Preservation				
PROGRAM NOTE		Funding identified to be obligated districtwide as projects are identified.				
ROUTE/STREET					TOTAL COST	
	FUND SOURCE	MATCH	FY15	FY16	FY17	FY18
CN	Federal - STP/F		\$12,220,958	\$7,571,606	\$5,786,916	\$6,993,405
MPO Note						

GROUPING		Maintenance : Preventive Maintenance for Bridges				
PROGRAM NOTE		Funding identified to be obligated districtwide as projects are identified.				
ROUTE/STREET					TOTAL COST	
	FUND SOURCE	MATCH	FY15	FY16	FY17	FY18
CN	Federal - BR		\$1,753,772	\$1,753,772	\$1,753,772	\$1,753,772
	Federal - STP/F		\$2,289,791	\$5,332,575	\$4,747,767	\$5,064,173
CN TOTAL			\$4,043,563	\$7,086,347	\$6,501,539	\$6,817,945
MPO Note						

GROUPING		Maintenance : Traffic and Safety Operations				
PROGRAM NOTE		Funding identified to be obligated districtwide as projects are identified.				
ROUTE/STREET					TOTAL COST	
	FUND SOURCE	MATCH	FY15	FY16	FY17	FY18
CN	Federal - STP/F		\$2,332,126	\$2,909,645	\$2,669,524	\$2,799,440
MPO Note						

Appendix A

Projects by Grouping

Construction : Bridge Rehabilitation/Replacement/Reconstruction

System	UPC	Jurisdiction / Name / Description	Street (Route)	Estimate
Interstate	97577	Botetourt County Rte 81 - NBL Bridge Replace over Rte 11 STR #3212 FROM: 4.11 Mi. Rte. 614 TO: 1.23 Mi. Rockbridge Co. Line	0081	\$4,622,664
Interstate	97560	Roanoke County Rte I-81 NBL Bridge Replace. over Rte 581 SW & NW Ramps FROM: Route 81 NBL Bridge Replacement Str. #2018 TO: over Route 581 NW & SW Ramps	0081	\$10,497,749
Interstate	97576	Roanoke County RTE 81 SBL - Bridge Replace over Rte. 112 Wildwood STR#14865 FROM: south of Route 112 Wildwood Bridge TO: north of Route 112 Wildwood Bridge	0081	\$6,256,011
Interstate	97578	Roanoke County RTE 81 NBL - Bridge Replace over Rte 642 Alleghany STR#14867 FROM: south of bridge over Rte 642 Alleghany Drive TO: north of bridge over Rte 642 Alleghany Drive	0081	\$3,504,624
Primary	77300	Botetourt County RTE 11 - REPLACE STRUCTURE OVER TINKER CREEK (STR#1012) 0.15 MILE EAST ROUTE 1039 (0.0700 MI)	0011	\$4,666,065
Primary	77302	Botetourt County RTE 11 - REPLACE STRUCTURE OVER TINKER CREEK (STR# 1013) 0.38 MILE EAST ROUTE 822 (0.0800 MI)	0011	\$3,992,457
Primary	78329	Botetourt County RTE. 11 - BRIDGE REPLACE. OVER FIRESTONE CREEK (STR.#1007) FROM: 4.41 Mi. North of Troutville TO: (0.89 Mi. N. Rte. 640 North) (0.1370 MI)	LEE HIGHWAY (0011)	\$3,341,324
Primary	77305	Roanoke County RTE 116 - BRIDGE REPLACEMENT OVER BACK CREEK 0.10 MILE NORTH ROUTE 939	0116	\$5,895,838
Primary	103210	Botetourt County RTE. 220 Corridor - Replace 6 Narrow Structures FROM: Rte. 870 (north of Eagle Rock) TO: Alleghany Co. Line (12.1000 MI)	0220	\$10,000,997

Appendix A
Projects by Grouping

Primary	82193	Roanoke County	0220	\$12,985,497
ROUTE 220 - BRIDGE OVER BACK CREEK - STRUCTURE #1039 FROM: 4.45 MI ROUTE 419 TO: 3.68 MI FRANKLIN COUNTY LINE				
Primary	94726	Roanoke County	0221	\$3,726,138
BRIDGE REPLACEMENT - RTE. 221 OVER MARTINS CREEK 0.01 mi S. Int Rte 696				
Secondary	62650	Bedford County	HARDY FORD BRIDGE (0634)	\$8,913,977
RTE 634 - HARDY FORD BRDG REPLACEMENT (SMITH MOUNTAIN LAKE) FROM: AT FRANKLIN/BEDFORD COUNTY LINE TO: (GOES WITH IDS 58885 & 58890)				
Secondary	103930	Botetourt County	1533	\$80,411
ARRA-C Salem District Culvert Replacements - Botetourt Co. FROM: 0.03 Mi. East of Route 1532 TO: 0.03 Mi. West of Route 1534 (0.0500 MI) Child UPC linked to UPC 103931				
Secondary	103931	Botetourt County	1533	\$181,022
ARRA Salem District Culvert Replacements - Botetourt Co. FROM: 0.03 Mi. East of Rte. 1532 TO: 0.03 Mi. West of Rte. 1534 (0.0500 MI) Parent UPC linked to 103930				
Secondary	52803	Botetourt County	CATAWBA RD (0779)	\$8,012,776
RTE 779 - INT IMPROVEMENTS & BRIDGE OVER AMSTERDAM CREEK FROM: 0.169 MILE EAST ROUTE 672 EAST TO: 0.236 MILE WEST ROUTE 672 EAST (0.4213 MI)				
Secondary	90086	Botetourt County	WEBSTER ROAD (0738)	\$5,026,945
RTE. 738 - BRIDGE REPLACEMENT (STRS. 6142 & 6143) FROM: Intersection Rte. 460 TO: 0.339 Mile East of Intersection 460 (0.3390 MI)				
Secondary	17221	Roanoke County	CATAWBA CREEK RD (0779)	\$2,195,884
RTE 779 - APPROACHES & BRIDGE OVER BRANCH OF CATAWBA CREEK FROM: 0.09 MILE WEST ROUTE 320 TO: 0.08 MILE EAST ROUTE 320 (0.1670 MI)				
Secondary	92700	Salem District-wide	0000	\$103,357
ARRA Salem District 2009 Design Build - Culverts FROM: Districtwide TO: Districtwide Waiting Financial Closure				

Appendix A
Projects by Grouping

Urban	78751	Salem	0011	\$4,657,075
		RTE 11 (Colorado St.) Bridge Replacement over Roanoke River		
		COLORADO STREET OVER ROANOKE RIVER		
Urban	76677	Vinton	WALNUT AVENUE (U000)	\$3,428,077
		replace bridge and approaches over Glade Creek		
		FROM: 0.098 Miles West of 5th St. TO: 0.052 Miles East of 5th St. (0.1500 MI)		
Construction : Bridge Rehabilitation/Replacement/Reconstruction Total				\$102,088,888

Construction : Safety/ITS/Operational Improvements

System	UPC	Jurisdiction / Name / Description	Street (Route)	Estimate
Interstate	92691	Botetourt County	0081	\$18,973,279
		ARRA Botetourt I-81 Undersealing/Paving/Guardrail Upgrades		
		FROM: Rte. 779 Bridge TO: Rte. 640 Bridge (9.6400 MI)		
		Parent UPC linked to UPC 103847		
Interstate	103847	Botetourt County	0081	\$1,400,000
		ARRA-C Botetourt I-81 Undersealing/Paving/Guardrail Upgrades		
		FROM: Rte 779 Bridge TO: Rte 460 bridge (9.6400 MI)		
		Child UPC linked to UPC 92691. All funding obligated based on current allocations/estimate		
Interstate	104048	Botetourt County	0081	\$610,000
		FY13-14 VMS Installation: Interstate 81		
		FROM: NB at MM 147.5 TO: SB at MM 172.0		
Interstate	99542	Roanoke County	0081	\$1,608,244
		RTE. 81 - EXIT 140 Park 'N Ride Facility Expansion		
		FROM: Exit 140 TO: off Rte. 1150 Edgebrook Rd.		
Interstate	104047	Roanoke County	INTERSTATE 81 (0081)	\$46,679
		I81 FY13-14 FIBER REDUNDANCY CONNECTION		
		FROM: Exit 140 TO: Exit 141 (1.0000 MI)		
		All funding obligated based on current allocations/estimate		
Interstate	103828	Salem District-wide	INTERSTATE 81 (0081)	\$9,312,213
		I81 Pavement Rehabilitation		
		FROM: VARIOUS TO: VARIOUS (6.6600 MI)		

Appendix A

Projects by Grouping

Interstate	104046	Salem District-wide	INTERSTATE 77 (0081)	\$792,587
		RTES. I77 & I81 - FY14-15 REPLACE SIGNS		
		FROM: Interstate 77 TO: Interstate 81		
Interstate	94089	Roanoke	0581	\$19,446,796
		ARRA RTE. 581 - at Elm Ave. (Design-Build)		
		FROM: Exit Ramps accessing Elm Ave. TO: 0.016 Mi.W.WilliamsonRd.-0.045 Mi. E. 4TH ST., SE ON ELM AVE (0.2240 MI)		
		Parent UPC linked to UPC 97231		
Interstate	97231	Roanoke	0581	\$3,443,137
		ARRA - C RTE. 581 - AT ELM AVE (DESIGN BUILD)		
		FROM: Exit Ramps accessing Elm Ave. TO: 0.016 Mi W WilliamsonRd.-0.045 MI. E 4th St., SE on Elm Ave. (0.2240 MI)		
		Child UPC linked to 94089. All funding obligated based on current allocations/estimate		
Interstate	103689	Salem District-wide	VARI	\$143,826
		FY13 Marking Task #5 - Salem District I81 & I77		
		FROM: Interstate 81 (MM 87.4 - 174.3) TO: Interstate 77 (MM 0 - 24.3)		
		All funding obligated based on current allocations/estimate		
Miscellaneous	102856	Roanoke	GARDEN CITY BOULEVARD (0000)	\$1,050,000
		City of Roanoke - SRTS - Garden City ES - Sidewalks etc.		
		FROM: Yellow Mountain Road TO: Ivywood Street (0.4200 MI)		
Miscellaneous	105019	Roanoke	VARIOUS (0000)	\$1,500,000
		Downtown Roanoke Signal Coordination		
		FROM: Roanoke TO: Roanoke		
Miscellaneous	105022	Roanoke	VARIOUS (9999)	\$3,500,000
		STREET RESURFACING IN VARIOUS VITAL ARTERIALS		
		FROM: VARIOUS TO: VARIOUS (4.4100 MI)		
Miscellaneous	104672	Salem District-wide	VARI	\$512,000
		VARI. RTES. - Install Flashing Yellow Arrows Districtwide		
		FROM: various routes districtwide TO: various routes districtwide		
Primary	98386	Roanoke County	FRANKLIN ROAD (0220)	\$332,336
		RTE. 220 - Replace Signal at Wal-mart		
		FROM: intersection of TO: Rte. 220 and Wal-mart		

Appendix A

Projects by Grouping

Primary	100660	Roanoke County	ALT RTE 220 (CLOVERDALE RD) (0220)	\$50,564
			RTE 220A - Install Flashing Beacons on signs FROM: Alt Rte 220 (Cloverdale Rd) TO: US 460 (Challenger Avenue NE)	
Primary	98390	Roanoke County	ROUTE 221 (0221)	\$322,950
			RTE 221 Signal Upgrade at RTE 682 FROM: Route 221 TO: Route 682	
Primary	100656	Salem	ROUTE 419 (0419)	\$543,201
			Construct sidewalk on west side of Route 419 FROM: Rotary Park TO: City Limits (0.4300 MI)	
Primary	100659	Roanoke	ROUTE 460 (0460)	\$344,993
			RTE 460 - Upgrade Traffic Signal at 13th Street FROM: Route 460 TO: 13th Street	
Secondary	15190	Roanoke County	COTTON HILL RD (0688)	\$7,128,818
			RTE 688 - RECONSTRUCTION FROM: 0.056 MILE SOUTH ROUTE 221 TO: 0.105 MILE SOUTH ROUTE 934 (0.6566 MI)	
Secondary	15187	Roanoke County	MCVITTY ROAD (1662)	\$14,207,299
			RTE 1662 - RECONSTRUCTION & REPLACE BRIDGE OVER MUD LICK CK FROM: INT. OF ROUTE 1663 TO: INT. OF ROUTE 419 (0.4680 MI) All funding obligated based on current allocations/estimate	
Secondary	15188	Roanoke County	OLD CAVE SPR LN (1663)	\$2,869,476
			RTE 1663 - RECONSTRUCT; DRAINAGE STRUCT/BRANCH MUD LICK CK FROM: SOUTH INT. ROUTE 221 TO: INT. OF ROUTE 1662 (0.2830 MI) All funding obligated based on current allocations/estimate	
Urban	80558	Roanoke	HERSHBERGER RD. (U000)	\$1,175,425
			RTE. U000 - CORRIDOR IMPROVEMENTS ON HERSHBERGER ROAD FROM: Cove Road TO: Rutgers St.	
Urban	80561	Roanoke	ORANGE AVE. (U000)	\$49,527,479
			DEVELOP ORANGE AVENUE TO URBAN 6 LANES - PE ONLY FROM: 0.006 MI. W. INT. 11TH ST., N.E. TO: 0.232 MI. E. INT. GUS W. NICKS BLVD., N.E. (1.1150 MI) All funding obligated based on current allocations/estimate	

Appendix A

Projects by Grouping

Urban	95178	Roanoke	ORANGE AVE. (0460)	\$438,900
			US 460/ Blue Hills E/WB LT Lanes and signal FROM: US460 @ Blue HillsDr & TO: Mexico Way (0.2500 MI)	
Urban	71741	Roanoke	RIVERLAND ROAD (0116)	\$7,991,814
			RIVERLAND ROAD - INTERSECTION IMPROVEMENT FROM: 0.021 Mi. West of Int. with Garden City Blvd. TO: 0.161 Mi. East of Int. with Bennington Street (0.3320 MI)	
Urban	97199	Salem	4TH ST., 3RD ST, VIRGINIA AND WALNUT (0000)	\$56,989
			Salem - SRTS - Lewis MS - Sidewalks FROM: 4th and S College Ave TO: 4th and Delaware St (0.1090 MI) Child UPC linked to UPC 81509	
Urban	8753	Salem	EAST MAIN STREET (0460)	\$38,217,193
			RTE 460 - WIDEN TO 3 LANES WITH CURB & SIDEWALK FROM: ROUTE 311 - THOMPSON MEMORIAL BLVD TO: 0.05 MILE EAST INTERSECTION KESSLER MILL ROAD (1.2300 All funding obligated based on current allocations/estimate	
Urban	105213	Vinton	WALNUT AVE (U000)	\$100,000
			Rte.U000 - Walnut Ave Ph. I - SW, Stripe, Xwalks & Landscape FROM: 5th St. TO: W. Lee Ave. Chld UPC	
Urban	93160	Vinton	WALNUT AVE. (0000)	\$2,334,931
			Rte. U000 - Walnut Ave. Int. Improvement at 8th St. FROM: at 8th TO: Street Parent UPC linked to 105213	
Construction : Safety/ITS/Operational Improvements Total				\$187,981,129

Appendix A

Projects by Grouping

Construction : Transportation Enhancement/Byway/Non-Traditional

System	UPC	Jurisdiction / Name / Description	Street (Route)	Estimate
Enhancement	105206	Salem Apperson Dr Rte. 11 Bridge - Sidewalk Expansion (Ph 4 RRG) FROM: East Riverside Drive TO: Electric Road Rte. 419 (0.0600 MI) Child UPC	APPERSON DRIVE (0000)	\$657,000
Enhancement	103345	Roanoke RR Grnwy-Bike/Ped b/t Vic Thomas/Ghent Hill Parks FROM: Vic Thomas Park TO: Ghent Hill Park (0.2500 MI) Child UPC	MEMORIAL AVE (0003)	\$0
Enhancement	103592	Roanoke Virginian Railway Station Restoration Phase 2 FROM: Virginian Railway Station TO: Virginian Railway Station Child UPC	0500	\$500,000
Enhancement	101838	Salem Bridge on Phase 3A_City of Salem Roanoke River Greenway FROM: approximately 1200' E. Mill Lane TO: Eddy St. Child project	ROANOKE RIVER GREENWAY (EN00)	\$0
Enhancement	91191	Roanoke County Rnke River Grnwy - City of Roanoke to Blue Ridge Parkway	EN08	\$6,824,090
Enhancement	97171	Roanoke County Roanoke Co, Roanoke River Grnwy, Green Hill Pk to Mill Ln	EN08	\$6,489,926
Enhancement	103607	Roanoke County Roanoke Co., Plantation Road Streetscape Improvements FROM: Interstate 81 TO: Williamson Road (Route 11) (0.9500 MI)	PLANTATION ROAD (RT. 115) (EN12)	\$5,297,128
Enhancement	103495	Roanoke County Low Water Bridge for HRB Trail near Int. Rtes. 419 and 311 Child project linked to UPC 17578	EN97	\$287,977
Miscellaneous	105021	Botetourt County BOTETOVRT AND ROANOKE CO GREENWAY CONNECTIVITY STUDY FROM: AT AND RTE 76 TO: AT AND RTE 76 (10.0000 MI)	APPALACHIAN TRAIL AND US BIKE RTE 76 (0076)	\$85,000

Appendix A

Projects by Grouping

Miscellaneous	105017	Vinton	GLADE/TINKER CREEK (GNWY)	\$1,800,000
		Glade/Tinker Creek Greenway Bridge		
		FROM: Vinton TO: Vinton		
Miscellaneous	105015	Roanoke	ROANOKE CITY (MMTS)	\$300,000
		Downtown Roanoke Multimodal Transportation Study		
		FROM: Roanoke TO: Roanoke		
		All funding obligated based on current allocations/estimate		
Miscellaneous	105020	Roanoke	TINKER CREEK GREENWAY (TCGW)	\$250,000
		Tinker Creek Greenway Corridor Planning Study		
		FROM: Roanoke TO: Roanoke		
Miscellaneous	102769	Roanoke	ROANOKE RIVER GREENWAY (U000)	\$5,863,800
		ROANOKE RIVER GREENWAY (Aerial Way Dr to Salem) - FY13 RS		
		FROM: Aerial Way Drive TO: SALEM CITY LIMITS (1.0000 MI)		
Primary	78217	Roanoke	EN05	\$760,000
		REHABILITATION OF VIRGINIAN RAILWAY STATION		
		Parent UPC link to UPC 103592		
Primary	99143	Roanoke County	RRP0	\$150,000
		Roanoke River Parkway Environmental Remediation		
		FROM: Blue Ridge Parkway (0.24 Mi N Rte. 618 Underpass) TO: 1.80 Mi. E. Blue Ridge Parkway (1.8000 MI)		
Rail	105014	Salem District-wide	FREIGHT INTERMODAL STUDY (0081)	\$200,000
		Impacts of Freight Intermodal Center-Trans & Econ-Study		
		FROM: Roanoke TO: Roanoke		
Urban	72180	Roanoke	EN03	\$2,953,449
		CITY OF ROANOKE - ROANOKE RIVER GREENWAY		
		WITHIN THE CITY OF ROANOKE LIMITS		
		Parent UPC linked to UPC 103345		
Urban	72658	Roanoke County	SBVA	\$1,242,625
		Mason Creek Greenway - Phase 1 of a 5 mi trail		
		FROM: Roanoke Boulevard TO: Lynchburg Turnpike (0.9800 MI)		
Urban	56409	Salem	EN00	\$1,950,763
		CITY OF SALEM - CONSTRUCTION OF 7 MILE BICYCLE/PEDESTRIAN		
		FROM: Western limits of Green Hill Park, Roanoke County TO: Eastern corporate limits of City of Salem (7.0000 MI)		
		Parent UPC linked to Child UPCs 101838 & 105206		
Construction : Transportation Enhancement/Byway/Non-Traditional Total				\$35,611,758

Appendix A
Projects by Grouping

Maintenance : Preventive Maintenance and System Preservation

System	UPC	Jurisdiction / Name / Description	Street (Route)	Estimate
Miscellaneous	T14722	Salem District-wide	0000	\$0
		STIP-MN Salem: Preventive MN and System Preservation		

Maintenance : Preventive Maintenance and System Preservation Total \$0

Maintenance : Preventive Maintenance for Bridges

System	UPC	Jurisdiction / Name / Description	Street (Route)	Estimate
Miscellaneous	T14721	Salem District-wide	0000	\$0
		STIP-MN Salem: Preventive MN for Bridges		

Maintenance : Preventive Maintenance for Bridges Total \$0

Maintenance : Traffic and Safety Operations

System	UPC	Jurisdiction / Name / Description	Street (Route)	Estimate
Miscellaneous	T14720	Salem District-wide	0000	\$0
		STIP-MN Salem: Traffic and Safety Operations		

Maintenance : Traffic and Safety Operations Total \$0

Roanoke MPO Total \$325,681,775

Appendix A

Projects by Grouping

Construction : Bridge Rehabilitation/Replacement/Reconstruction

System	UPC	Jurisdiction / Name / Description	Street (Route)	Estimate
Interstate	97577	Botetourt County Rte 81 - NBL Bridge Replace over Rte 11 STR #3212 FROM: 4.11 Mi. Rte. 614 TO: 1.23 Mi. Rockbridge Co. Line	0081	\$4,622,664
Interstate	97560	Roanoke County Rte I-81 NBL Bridge Replace. over Rte 581 SW & NW Ramps FROM: Route 81 NBL Bridge Replacement Str. #2018 TO: over Route 581 NW & SW Ramps	0081	\$10,497,749
Interstate	97576	Roanoke County RTE 81 SBL - Bridge Replace over Rte. 112 Wildwood STR#14865 FROM: south of Route 112 Wildwood Bridge TO: north of Route 112 Wildwood Bridge	0081	\$6,256,011
Interstate	97578	Roanoke County RTE 81 NBL - Bridge Replace over Rte 642 Alleghany STR#14867 FROM: south of bridge over Rte 642 Alleghany Drive TO: north of bridge over Rte 642 Alleghany Drive	0081	\$3,504,624
Primary	77300	Botetourt County RTE 11 - REPLACE STRUCTURE OVER TINKER CREEK (STR#1012) 0.15 MILE EAST ROUTE 1039 (0.0700 MI)	0011	\$4,666,065
Primary	77302	Botetourt County RTE 11 - REPLACE STRUCTURE OVER TINKER CREEK (STR# 1013) 0.38 MILE EAST ROUTE 822 (0.0800 MI)	0011	\$3,992,457
Primary	78329	Botetourt County RTE. 11 - BRIDGE REPLACE. OVER FIRESTONE CREEK (STR.#1007) FROM: 4.41 Mi. North of Troutville TO: (0.89 Mi. N. Rte. 640 North) (0.1370 MI)	LEE HIGHWAY (0011)	\$3,341,324
Primary	77305	Roanoke County RTE 116 - BRIDGE REPLACEMENT OVER BACK CREEK 0.10 MILE NORTH ROUTE 939	0116	\$5,895,838
Primary	103210	Botetourt County RTE. 220 Corridor - Replace 6 Narrow Structures FROM: Rte. 870 (north of Eagle Rock) TO: Alleghany Co. Line (12.1000 MI)	0220	\$10,000,997

Appendix A

Projects by Grouping

Primary	82193	Roanoke County	0220	\$12,985,497
ROUTE 220 - BRIDGE OVER BACK CREEK - STRUCTURE #1039				
FROM: 4.45 MI ROUTE 419 TO: 3.68 MI FRANKLIN COUNTY LINE				
Primary	94726	Roanoke County	0221	\$3,726,138
BRIDGE REPLACEMENT - RTE. 221 OVER MARTINS CREEK				
0.01 mi S. Int Rte 696				
Secondary	62650	Bedford County	HARDY FORD BRIDGE (0634)	\$8,913,977
RTE 634 - HARDY FORD BRDG REPLACEMENT (SMITH MOUNTAIN LAKE)				
FROM: AT FRANKLIN/BEDFORD COUNTY LINE TO: (GOES WITH IDS 58885 & 58890)				
Secondary	103930	Botetourt County	1533	\$80,411
ARRA-C Salem District Culvert Replacements - Botetourt Co.				
FROM: 0.03 Mi. East of Route 1532 TO: 0.03 Mi. West of Route 1534 (0.0500 MI)				
Child UPC linked to UPC 103931				
Secondary	103931	Botetourt County	1533	\$181,022
ARRA Salem District Culvert Replacements - Botetourt Co.				
FROM: 0.03 Mi. East of Rte. 1532 TO: 0.03 Mi. West of Rte. 1534 (0.0500 MI)				
Parent UPC linked to 103930				
Secondary	52803	Botetourt County	CATAWBA RD (0779)	\$8,012,776
RTE 779 - INT IMPROVEMENTS & BRIDGE OVER AMSTERDAM CREEK				
FROM: 0.169 MILE EAST ROUTE 672 EAST TO: 0.236 MILE WEST ROUTE 672 EAST (0.4213 MI)				
Secondary	90086	Botetourt County	WEBSTER ROAD (0738)	\$5,026,945
RTE. 738 - BRIDGE REPLACEMENT (STRS. 6142 & 6143)				
FROM: Intersection Rte. 460 TO: 0.339 Mile East of Intersection 460 (0.3390 MI)				
Secondary	17221	Roanoke County	CATAWBA CREEK RD (0779)	\$2,195,884
RTE 779 - APPROACHES & BRIDGE OVER BRANCH OF CATAWBA CREEK				
FROM: 0.09 MILE WEST ROUTE 320 TO: 0.08 MILE EAST ROUTE 320 (0.1670 MI)				
Secondary	92700	Salem District-wide	0000	\$103,357
ARRA Salem District 2009 Design Build - Culverts				
FROM: Districtwide TO: Districtwide				
Waiting Financial Closure				

Appendix A Projects by Grouping

Urban	78751	Salem	0011	\$4,657,075
		RTE 11 (Colorado St.) Bridge Replacement over Roanoke River COLORADO STREET OVER ROANOKE RIVER		
Urban	76677	Vinton	WALNUT AVENUE (U000)	\$3,428,077
		replace bridge and approaches over Glade Creek FROM: 0.098 Miles West of 5th St. TO: 0.052 Miles East of 5th St. (0.1500 MI)		
Construction : Bridge Rehabilitation/Replacement/Reconstruction Total				\$102,088,888

Construction : Safety/ITS/Operational Improvements

System	UPC	Jurisdiction / Name / Description	Street (Route)	Estimate
Interstate	92691	Botetourt County	0081	\$18,973,279
		ARRA Botetourt I-81 Undersealing/Paving/Guardrail Upgrades FROM: Rte. 779 Bridge TO: Rte. 640 Bridge (9.6400 MI) Parent UPC linked to UPC 103847		
Interstate	103847	Botetourt County	0081	\$1,400,000
		ARRA-C Botetourt I-81 Undersealing/Paving/Guardrail Upgrades FROM: Rte 779 Bridge TO: Rte 460 bridge (9.6400 MI) Child UPC linked to UPC 92691. All funding obligated based on current allocations/estimate		
Interstate	104048	Botetourt County	0081	\$610,000
		FY13-14 VMS Installation: Interstate 81 FROM: NB at MM 147.5 TO: SB at MM 172.0		
Interstate	99542	Roanoke County	0081	\$1,608,244
		RTE. 81 - EXIT 140 Park 'N Ride Facility Expansion FROM: Exit 140 TO: off Rte. 1150 Edgebrook Rd.		
Interstate	104047	Roanoke County	INTERSTATE 81 (0081)	\$46,679
		I81 FY13-14 FIBER REDUNDANCY CONNECTION FROM: Exit 140 TO: Exit 141 (1.0000 MI) All funding obligated based on current allocations/estimate		
Interstate	103828	Salem District-wide	INTERSTATE 81 (0081)	\$9,312,213
		I81 Pavement Rehabilitation FROM: VARIOUS TO: VARIOUS (6.6600 MI)		

Appendix A

Projects by Grouping

Interstate	104046	Salem District-wide RTES. I77 & I81 - FY14-15 REPLACE SIGNS FROM: Interstate 77 TO: Interstate 81	INTERSTATE 77 (0081)	\$792,587
Interstate	94089	Roanoke ARRA RTE. 581 - at Elm Ave. (Design-Build) FROM: Exit Ramps accessing Elm Ave. TO: 0.016 Mi.W.WilliamsonRd.-0.045 Mi. E. 4TH ST., SE ON ELM AVE (0.2240 MI) Parent UPC linked to UPC 97231	0581	\$19,446,796
Interstate	97231	Roanoke ARRA - C RTE. 581 - AT ELM AVE (DESIGN BUILD) FROM: Exit Ramps accessing Elm Ave. TO: 0.016 Mi W WilliamsonRd.-0.045 MI. E 4th St., SE on Elm Ave. (0.2240 MI) Child UPC linked to 94089. All funding obligated based on current allocations/estimate	0581	\$3,443,137
Interstate	103689	Salem District-wide FY13 Marking Task #5 - Salem District I81 & I77 FROM: Interstate 81 (MM 87.4 - 174.3) TO: Interstate 77 (MM 0 - 24.3) All funding obligated based on current allocations/estimate	VARI	\$143,826
Miscellaneous	102856	Roanoke City of Roanoke - SRTS - Garden City ES - Sidewalks etc. FROM: Yellow Mountain Road TO: Ivywood Street (0.4200 MI)	GARDEN CITY BOULEVARD (0000)	\$1,050,000
Miscellaneous	105019	Roanoke Downtown Roanoke Signal Coordination FROM: Roanoke TO: Roanoke	VARIOUS (0000)	\$1,500,000
Miscellaneous	105022	Roanoke STREET RESURFACING IN VARIOUS VITAL ARTERIALS FROM: VARIOUS TO: VARIOUS (4.4100 MI)	VARIOUS (9999)	\$3,500,000
Miscellaneous	104672	Salem District-wide VARI. RTES. - Install Flashing Yellow Arrows Districtwide FROM: various routes districtwide TO: various routes districtwide	VARI	\$512,000
Primary	98386	Roanoke County RTE. 220 - Replace Signal at Wal-mart FROM: intersection of TO: Rte. 220 and Wal-mart	FRANKLIN ROAD (0220)	\$332,336

Appendix A

Projects by Grouping

Primary	100660	Roanoke County	ALT RTE 220 (CLOVERDALE RD) (0220)	\$50,564
			RTE 220A - Install Flashing Beacons on signs FROM: Alt Rte 220 (Cloverdale Rd) TO: US 460 (Challenger Avenue NE)	
Primary	98390	Roanoke County	ROUTE 221 (0221)	\$322,950
			RTE 221 Signal Upgrade at RTE 682 FROM: Route 221 TO: Route 682	
Primary	100656	Salem	ROUTE 419 (0419)	\$543,201
			Construct sidewalk on west side of Route 419 FROM: Rotary Park TO: City Limits (0.4300 MI)	
Primary	100659	Roanoke	ROUTE 460 (0460)	\$344,993
			RTE 460 - Upgrade Traffic Signal at 13th Street FROM: Route 460 TO: 13th Street	
Secondary	15190	Roanoke County	COTTON HILL RD (0688)	\$7,128,818
			RTE 688 - RECONSTRUCTION FROM: 0.056 MILE SOUTH ROUTE 221 TO: 0.105 MILE SOUTH ROUTE 934 (0.6566 MI)	
Secondary	15187	Roanoke County	MCVITTY ROAD (1662)	\$14,207,299
			RTE 1662 - RECONSTRUCTION & REPLACE BRIDGE OVER MUD LICK CK FROM: INT. OF ROUTE 1663 TO: INT. OF ROUTE 419 (0.4680 MI) All funding obligated based on current allocations/estimate	
Secondary	15188	Roanoke County	OLD CAVE SPR LN (1663)	\$2,869,476
			RTE 1663 - RECONSTRUCT; DRAINAGE STRUCT/BRANCH MUD LICK CK FROM: SOUTH INT. ROUTE 221 TO: INT. OF ROUTE 1662 (0.2830 MI) All funding obligated based on current allocations/estimate	
Urban	80558	Roanoke	HERSHBERGER RD. (U000)	\$1,175,425
			RTE. U000 - CORRIDOR IMPROVEMENTS ON HERSHBERGER ROAD FROM: Cove Road TO: Rutgers St.	
Urban	80561	Roanoke	ORANGE AVE. (U000)	\$49,527,479
			DEVELOP ORANGE AVENUE TO URBAN 6 LANES - PE ONLY FROM: 0.006 MI. W. INT. 11TH ST., N.E. TO: 0.232 MI. E. INT. GUS W. NICKS BLVD., N.E. (1.1150 MI) All funding obligated based on current allocations/estimate	

Appendix A

Projects by Grouping

Urban	95178	Roanoke	ORANGE AVE. (0460)	\$438,900
			US 460/ Blue Hills E/WB LT Lanes and signal FROM: US460 @ Blue HillsDr & TO: Mexico Way (0.2500 MI)	
Urban	71741	Roanoke	RIVERLAND ROAD (0116)	\$7,991,814
			RIVERLAND ROAD - INTERSECTION IMPROVEMENT FROM: 0.021 Mi. West of Int. with Garden City Blvd. TO: 0.161 Mi. East of Int. with Bennington Street (0.3320 MI)	
Urban	97199	Salem	4TH ST., 3RD ST, VIRGINIA AND WALNUT (0000)	\$56,989
			Salem - SRTS - Lewis MS - Sidewalks FROM: 4th and S College Ave TO: 4th and Delaware St (0.1090 MI) Child UPC linked to UPC 81509	
Urban	8753	Salem	EAST MAIN STREET (0460)	\$38,217,193
			RTE 460 - WIDEN TO 3 LANES WITH CURB & SIDEWALK FROM: ROUTE 311 - THOMPSON MEMORIAL BLVD TO: 0.05 MILE EAST INTERSECTION KESSLER MILL ROAD (1.2300 All funding obligated based on current allocations/estimate	
Urban	105213	Vinton	WALNUT AVE (U000)	\$100,000
			Rte.U000 - Walnut Ave Ph. I - SW, Stripe, Xwalks & Landscape FROM: 5th St. TO: W. Lee Ave. Chld UPC	
Urban	93160	Vinton	WALNUT AVE. (0000)	\$2,334,931
			Rte. U000 - Walnut Ave. Int. Improvement at 8th St. FROM: at 8th TO: Street Parent UPC linked to 105213	
Construction : Safety/ITS/Operational Improvements Total				\$187,981,129

Appendix A

Projects by Grouping

Construction : Transportation Enhancement/Byway/Non-Traditional

System	UPC	Jurisdiction / Name / Description	Street (Route)	Estimate
Enhancement	105206	Salem Apperson Dr Rte. 11 Bridge - Sidewalk Expansion (Ph 4 RRG) FROM: East Riverside Drive TO: Electric Road Rte. 419 (0.0600 MI) Child UPC	APPERSON DRIVE (0000)	\$657,000
Enhancement	103345	Roanoke RR Grnwy-Bike/Ped b/t Vic Thomas/Ghent Hill Parks FROM: Vic Thomas Park TO: Ghent Hill Park (0.2500 MI) Child UPC	MEMORIAL AVE (0003)	\$0
Enhancement	103592	Roanoke Virginian Railway Station Restoration Phase 2 FROM: Virginian Railway Station TO: Virginian Railway Station Child UPC	0500	\$500,000
Enhancement	101838	Salem Bridge on Phase 3A_City of Salem Roanoke River Greenway FROM: approximately 1200' E. Mill Lane TO: Eddy St. Child project	ROANOKE RIVER GREENWAY (EN00)	\$0
Enhancement	91191	Roanoke County Rnke River Grnwy - City of Roanoke to Blue Ridge Parkway	EN08	\$6,824,090
Enhancement	97171	Roanoke County Roanoke Co, Roanoke River Grnwy, Green Hill Pk to Mill Ln	EN08	\$6,489,926
Enhancement	103607	Roanoke County Roanoke Co., Plantation Road Streetscape Improvements FROM: Interstate 81 TO: Williamson Road (Route 11) (0.9500 MI)	PLANTATION ROAD (RT. 115) (EN12)	\$5,297,128
Enhancement	103495	Roanoke County Low Water Bridge for HRB Trail near Int. Rtes. 419 and 311 Child project linked to UPC 17578	EN97	\$287,977
Miscellaneous	105021	Botetourt County BOTETOVRT AND ROANOKE CO GREENWAY CONNECTIVITY STUDY FROM: AT AND RTE 76 TO: AT AND RTE 76 (10.0000 MI)	APPALACHIAN TRAIL AND US BIKE RTE 76 (0076)	\$85,000

Appendix A

Projects by Grouping

Miscellaneous	105017	Vinton	GLADE/TINKER CREEK (GNWY)	\$1,800,000
		Glade/Tinker Creek Greenway Bridge		
		FROM: Vinton TO: Vinton		
Miscellaneous	105015	Roanoke	ROANOKE CITY (MMTS)	\$300,000
		Downtown Roanoke Multimodal Transportation Study		
		FROM: Roanoke TO: Roanoke		
		All funding obligated based on current allocations/estimate		
Miscellaneous	105020	Roanoke	TINKER CREEK GREENWAY (TCGW)	\$250,000
		Tinker Creek Greenway Corridor Planning Study		
		FROM: Roanoke TO: Roanoke		
Miscellaneous	102769	Roanoke	ROANOKE RIVER GREENWAY (U000)	\$5,863,800
		ROANOKE RIVER GREENWAY (Aerial Way Dr to Salem) - FY13 RS		
		FROM: Aerial Way Drive TO: SALEM CITY LIMITS (1.0000 MI)		
Primary	78217	Roanoke	EN05	\$760,000
		REHABILITATION OF VIRGINIAN RAILWAY STATION		
		Parent UPC link to UPC 103592		
Primary	99143	Roanoke County	RRP0	\$150,000
		Roanoke River Parkway Environmental Remediation		
		FROM: Blue Ridge Parkway (0.24 Mi N Rte. 618 Underpass) TO: 1.80 Mi. E. Blue Ridge Parkway (1.8000 MI)		
Rail	105014	Salem District-wide	FREIGHT INTERMODAL STUDY (0081)	\$200,000
		Impacts of Freight Intermodal Center-Trans & Econ-Study		
		FROM: Roanoke TO: Roanoke		
Urban	72180	Roanoke	EN03	\$2,953,449
		CITY OF ROANOKE - ROANOKE RIVER GREENWAY		
		WITHIN THE CITY OF ROANOKE LIMITS		
		Parent UPC linked to UPC 103345		
Urban	72658	Roanoke County	SBVA	\$1,242,625
		Mason Creek Greenway - Phase 1 of a 5 mi trail		
		FROM: Roanoke Boulevard TO: Lynchburg Turnpike (0.9800 MI)		
Urban	56409	Salem	EN00	\$1,950,763
		CITY OF SALEM - CONSTRUCTION OF 7 MILE BICYCLE/PEDESTRIAN		
		FROM: Western limits of Green Hill Park, Roanoke County TO: Eastern corporate limits of City of Salem (7.0000 MI)		
		Parent UPC linked to Child UPCs 101838 & 105206		
Construction : Transportation Enhancement/Byway/Non-Traditional Total				\$35,611,758

Appendix A
Projects by Grouping

Maintenance : Preventive Maintenance and System Preservation

System	UPC	Jurisdiction / Name / Description	Street (Route)	Estimate
Miscellaneous	T14722	Salem District-wide STIP-MN Salem: Preventive MN and System Preservation	0000	\$0

Maintenance : Preventive Maintenance and System Preservation Total \$0

Maintenance : Preventive Maintenance for Bridges

System	UPC	Jurisdiction / Name / Description	Street (Route)	Estimate
Miscellaneous	T14721	Salem District-wide STIP-MN Salem: Preventive MN for Bridges	0000	\$0

Maintenance : Preventive Maintenance for Bridges Total \$0

Maintenance : Traffic and Safety Operations

System	UPC	Jurisdiction / Name / Description	Street (Route)	Estimate
Miscellaneous	T14720	Salem District-wide STIP-MN Salem: Traffic and Safety Operations	0000	\$0

Maintenance : Traffic and Safety Operations Total \$0

Roanoke MPO Total \$325,681,775

APPENDIX B - Ungrouped Projects

Roanoke MPO

Interstate Projects

UPC NO	80056	SCOPE	Preliminary Engineering			
SYSTEM	Interstate	JURISDICTION	Roanoke County	OVERSIGHT	NFO	
PROJECT	RTE 73 - ROANOKE COUNTY - PARTIAL PE ONLY			ADMIN BY	VDOT	
DESCRIPTION	I-73 - ROANOKE COUNTY					
PROGRAM NOTE	All funding obligated based on current allocations/estimate					
ROUTE/STREET	0073				TOTAL COST	\$423,485,834
	FUND SOURCE	MATCH	FY15	FY16	FY17	FY18
PE	Federal - SAFETEA-LU	\$492,560	\$0	\$0	\$0	\$1,970,239
MPO Note						

UPC NO	16596	SCOPE	Preliminary Engineering			
SYSTEM	Interstate	JURISDICTION	Salem District-wide	OVERSIGHT	FO	
PROJECT	RTE 73 - PROPOSED CORRIDOR LOCATION ALIGNMENT - PE ONLY			ADMIN BY	VDOT	
DESCRIPTION	FROM: ROANOKE TO: NORTH CAROLINA STATE LINE					
ROUTE/STREET	0073				TOTAL COST	\$10,000,000
	FUND SOURCE	MATCH	FY15	FY16	FY17	FY18
PE	Federal - HPD	(\$50,199)	(\$200,796)	\$0	\$0	\$0
MPO Note						

UPC NO	75910	SCOPE	Relocation			
SYSTEM	Interstate	JURISDICTION	Botetourt County	OVERSIGHT	FO	
PROJECT	Route 11,220,220A Access Management Project at I-81 Exit 150			ADMIN BY	VDOT	
DESCRIPTION	FROM: 0.30 MILE SOUTH OF ROUTE 220 TO: 0.60 MILE NORTH OF ROUTE 220 (0.9000 MI)					
ROUTE/STREET	0081				TOTAL COST	\$46,749,850
	FUND SOURCE	MATCH	FY15	FY16	FY17	FY18
PE	Federal - NH	(\$901,800)	(\$3,607,200)	\$0	\$0	\$0
RW	Federal - AC CONVERSION	\$0	\$4,387,306	\$0	\$0	\$0
CN	Federal - NH	\$896,796	\$3,587,185	\$0	\$0	\$0
	Federal - NHPP	\$0	\$1,533,788	\$0	\$0	\$0
	Federal - STP/F	\$204,939	\$819,754	\$0	\$0	\$0
CN TOTAL		\$1,101,735	\$5,940,727	\$0	\$0	\$0
CN AC	Federal - AC	\$0	\$12,141,314	\$0	\$0	\$0
MPO Note						

UPC NO	16595	SCOPE	Reconstruction w/ Added Capacity			
SYSTEM	Interstate	JURISDICTION	Roanoke	OVERSIGHT	FO	
PROJECT	RTE 581 - VALLEY VIEW INTERCHANGE PHASE II			ADMIN BY	VDOT	
DESCRIPTION	FROM: 0.300 MI. S. ROUTE 101 (HERSHBERGER ROAD) TO: 1.560 MI. S. ROUTE 101 (HERSHBERGER ROAD) (1.2600 MI)					
ROUTE/STREET	0581				TOTAL COST	\$63,909,490
	FUND SOURCE	MATCH	FY15	FY16	FY17	FY18
PE	Federal - AC CONVERSION	\$0	\$0	\$0	\$4,794,514	\$0
PE AC	Federal - AC	\$0	\$4,794,514	\$0	\$0	\$0
RW	Federal - AC CONVERSION	\$0	\$0	\$396,861	\$0	\$0
RW AC	Federal - AC	\$0	\$707,750	\$0	\$0	\$0
CN	Federal - AC CONVERSION	\$0	\$19,690,179	\$0	\$0	\$0
MPO Note						

Roanoke MPO

Primary Projects

UPC NO	17698	SCOPE	Reconstruction w/ Added Capacity			
SYSTEM	Primary	JURISDICTION	Roanoke County	OVERSIGHT	NFO	
PROJECT	RTE 11/460 - Widen to 4-LN w/curb, gutter, and raised median			ADMIN BY	VDOT	
DESCRIPTION	FROM: .055 MI. E. OF WCL SALEM TO: 0.10 MILE WEST ROUTE 830 (2.1880 MI)					
ROUTE/STREET	W.MAIN ST. (0011)			TOTAL COST	\$43,632,785	
	FUND SOURCE	MATCH	FY15	FY16	FY17	FY18
PE	Federal - RSTP	\$35,591	\$142,365	\$0	\$0	\$0
PE AC	Federal - AC	\$0	\$51,879	\$0	\$0	\$0
RW AC	Federal - AC	\$0	\$917,566	\$0	\$0	\$0
CN AC	Federal - AC	\$0	\$3,856,144	\$0	\$0	\$0
MPO Note						

UPC NO	98220	SCOPE	Preliminary Engineering			
SYSTEM	Primary	JURISDICTION	Roanoke County	OVERSIGHT	NFO	
PROJECT	RTE. 115, Plantation Rd Corridor Improvements			ADMIN BY	Locally	
DESCRIPTION	FROM: I81 TO: Rte.11 (Williamson Road) (0.9500 MI)					
ROUTE/STREET	PLANTATION ROAD (0115)			TOTAL COST	\$1,566,835	
	FUND SOURCE	MATCH	FY15	FY16	FY17	FY18
PE AC	Federal - AC	\$0	\$329,851	\$0	\$0	\$0
CN AC	Federal - AC	\$0	\$0	\$1,236,984	\$0	\$0
MPO Note						

UPC NO	50006	SCOPE	Reconstruction w/ Added Capacity			
SYSTEM	Primary	JURISDICTION	Roanoke County	OVERSIGHT	NFO	
PROJECT	RTE 221 - RECONSTRUCT TO 4 LANES - RW			ADMIN BY	VDOT	
DESCRIPTION	FROM: 0.035 KILOMETER SOUTH ROUTE 688 TO: 1.478 KILOMETER NORTH ROUTE 688 (1.5120 KM)					
ROUTE/STREET	0221			TOTAL COST	\$3,532,946	
	FUND SOURCE	MATCH	FY15	FY16	FY17	FY18
RW	Federal - BR	\$14,379	\$57,516	\$0	\$0	\$0
	Federal - STP/F	\$4,246	\$16,983	\$0	\$0	\$0
RW TOTAL		\$18,625	\$74,499	\$0	\$0	\$0
RW AC	Federal - AC	\$0	\$3,439,822	\$0	\$0	\$0
MPO Note						

UPC NO	95812	SCOPE	New Construction Roadway			
SYSTEM	Primary	JURISDICTION	Roanoke County	OVERSIGHT	NFO	
PROJECT	ARRA - Roanoke 221 Reconstruct to 4 Lanes (CN Phase only)			ADMIN BY	VDOT	
DESCRIPTION	FROM: 0.035 Km. S. Rte. 688 TO: 1.478 Km. N. Rte. 688 (1.5120 KM)					
PROGRAM NOTE	All funding obligated based on current allocations/estimate: Parent UPC linked to UPC 96139					
ROUTE/STREET	0221			TOTAL COST	\$25,364,476	
	FUND SOURCE	MATCH	FY15	FY16	FY17	FY18
		\$0	\$0	\$0	\$0	\$0
MPO Note						

UPC NO	96139	SCOPE	New Construction Roadway			
SYSTEM	Primary	JURISDICTION	Roanoke County	OVERSIGHT	NFO	
PROJECT	ARRA-C Roanoke 221 Reconstruct to 4 Lanes (CN Phase Only)			ADMIN BY	VDOT	
DESCRIPTION	FROM: 0.035 km. S. Rte. 688 TO: 1.478 km N. Rte. 688 (1.5120 KM)					
PROGRAM NOTE	Child UPC linked to UPC 95812					
ROUTE/STREET	0221			TOTAL COST	\$1,312,524	
	FUND SOURCE	MATCH	FY15	FY16	FY17	FY18
CN	Other	\$0	(\$1,103,051)	\$0	\$0	\$0
MPO Note						

Roanoke MPO

Urban Projects

UPC NO	688	SCOPE	Reconstruction w/ Added Capacity			
SYSTEM	Urban	JURISDICTION	Roanoke	OVERSIGHT	NFO	
PROJECT	13TH STREET AND HOLLINS ROAD			ADMIN BY	VDOT	
DESCRIPTION	FROM: JAMISON AVE TO: .08 MILE NORTH INT. ORANGE AVENUE (0.9790 MI)					
PROGRAM NOTE	All funding obligated based on current allocations/estimate					
ROUTE/STREET	13TH ST/ HOLLINS RD (U000)			TOTAL COST	\$56,523,233	
	FUND SOURCE	MATCH	FY15	FY16	FY17	FY18
RW	Federal - EB	\$152,753	\$611,013	\$0	\$0	\$0
MPO Note						

UPC NO	52076	SCOPE	Reconstruction w/o Added Capacity			
SYSTEM	Urban	JURISDICTION	Salem	OVERSIGHT	NFO	
PROJECT	RTE 11 - APPERSON DR - INTERSECTION IMPROVEMENTS - PE ONLY			ADMIN BY	VDOT	
DESCRIPTION	AT ROUTE 419 (ELECTRIC ROAD) (0.3000 MI)					
ROUTE/STREET	APPERSON DRIVE (0011)			TOTAL COST	\$36,569,924	
	FUND SOURCE	MATCH	FY15	FY16	FY17	FY18
PE	Federal - BR	\$392,558	\$1,570,232	\$0	\$0	\$0
PE AC	Federal - AC	\$0	\$1,158,016	\$0	\$0	\$0
MPO Note						