



Roanoke Valley-Alleghany

REGIONAL commission

FY 2014

COMPREHENSIVE WORK PROGRAM

ADOPTED MAY 23, 2013

WORK PROGRAMS PLANNING URBAN
TRANSPORTATION PROJECTS TECHNICAL
ASSISTANCE LOCAL PROJECTS
STRATEGIC PLANNING TIP RSTP TA
PARTNERSHIP FOR A LIVABLE ROANOKE
VALLEY ANNUAL WORK RURAL
TRANSPORTATION PROGRAMS RYAMPO
CORRIDOR STUDIES BICYCLE PEDESTRIAN
GREENWAY TRAIL PLANNING PUBLIC
TRANSPORTATION PLANNING
CONGESTION MANAGEMENT PLAN
BROADBAND AND FIBER ANALYSIS
STORMWATER MANAGEMENT BLUE
WAY MAPPING TREE CANOPY
PROTECTION ARTS AND CULTURAL
ECONOMIC IMPACTS ASSESSMENTS
BLUE RIDGE INTERAGENCY COUNCIL ON
HOMELESSNESS REGIONAL LEADERSHIP
COLLABORATION IMPLAN GRANT
WRITING DATA CENTER PUBLIC
RELATIONS RIDE SOLUTIONS STRATEGIC
ECONOMIC DEVELOPMENT WORKFORCE
DEVELOPMENT WORK PROGRAMS
PLANNING URBAN TRANSPORTATION
PROJECTS TECHNICAL ASSISTANCE
LOCAL PROJECTS STRATEGIC PLANNING
TIP RSTP TA PARTNERSHIP FOR A LIVABLE
ROANOKE VALLEY ANNUAL WORK
RURAL TRANSPORTATION PROGRAMS
RYAMPO CORRIDOR STUDIES BICYCLE
PEDESTRIAN GREENWAY TRAIL
PLANNING PUBLIC TRANSPORTATION
PLANNING CONGESTION
MANAGEMENT PLAN BROADBAND AND
FIBER ANALYSIS STORMWATER
MANAGEMENT BLUE WAY MAPPING
TREE CANOPY PROTECTION ARTS AND
CULTURAL ECONOMIC IMPACTS
ASSESSMENTS BLUE RIDGE COUNCIL ON
HOMELESSNESS REGIONAL LEADERSHIP
COLLABORATION IMPLAN GRANT
WRITING DATA CENTER PUBLIC
RELATIONS RIDE SOLUTIONS STRATEGIC

ROANOKE VALLEY-ALLEGHANY REGIONAL COMMISSION

FY 2014 COMPREHENSIVE WORK PROGRAM

TABLE OF CONTENTS

	<u>PAGE</u>
STAFF	1
OVERVIEW	2
SERVICE AREA MAP	3
ACRONYMS	4
REGIONAL PROJECTS	5
LOCAL PROJECTS	12
OTHER	14
URBAN TRANSPORTATION PROJECTS	16
RURAL TRANSPORTATION PROJECTS	22

STAFF

EXECUTIVE DIRECTOR

Wayne G. Strickland

PLANNING STAFF

Cristina Finch, *AICP, LEED AP, Regional Planner III*

Jake Gilmer, *AICP, LEED GA, Senior Planner*

Tyler Godsey, *Communications Manager & Sustainability Programs Technician*

Jeremy Holmes, *LEED GA, Alternative Transportation Coordinator*

Mark McCaskill, *AICP, Senior Planner*

Matt Miller, *GISP, Director of Information Services*

Shane Sawyer, *Regional Planner III*

Eddie Wells, *AICP, CZA, Senior Planner*

Administrative Staff

Olivia Dooley, *Director of Finance*

Jackie L. Pace, *Office Manager*

NOTES:

AICP	American Institute of Certified Planners
CZA	Certified Zoning Administrator
GISP	Geographic Information System Professional
LEED AP	Leadership in Energy & Environmental Design Accredited Professional
LEED GA	Leadership in Energy & Environmental Design Green Associate



Roanoke Valley-Alleghany

REGIONAL commission

Mailing Address:

P.O. Box 2569
Roanoke, VA 24010

Physical Address:

313 Luck Ave., SW
Roanoke, VA 24016

Ph:540-343-4417 rvarc@rvarc.org www.rvarc.org

OVERVIEW

The annual Comprehensive Work Program is the basis for achieving the objectives and strategies outlined in the Roanoke Valley Alleghany Regional Commission's Strategic Plan. The Commission strives to maximize its limited staff and resources by developing a comprehensive work plan based on current needs and priorities of the region.

This Work Program is a compilation of projects presented by Commission members, Chief Administrative Officials, the Roanoke Valley Area Metropolitan Planning Organization (RVAMPO) Policy Board, regional economic development-related organizations and staff. Projects are reviewed and ranked according to importance, funding availability, staff time and other constraints. The intent is to obtain the most benefit from the least direct cost to the local governments. Requests not included in this year's work program are added to a list of potential projects for future work programs. These potential projects may be included in next year's work program if the need still exists and funding is available.

The work program is revised annually and may be amended as deemed necessary by the member governments that we serve.

Members of the FY 2014 Work Program Committee:

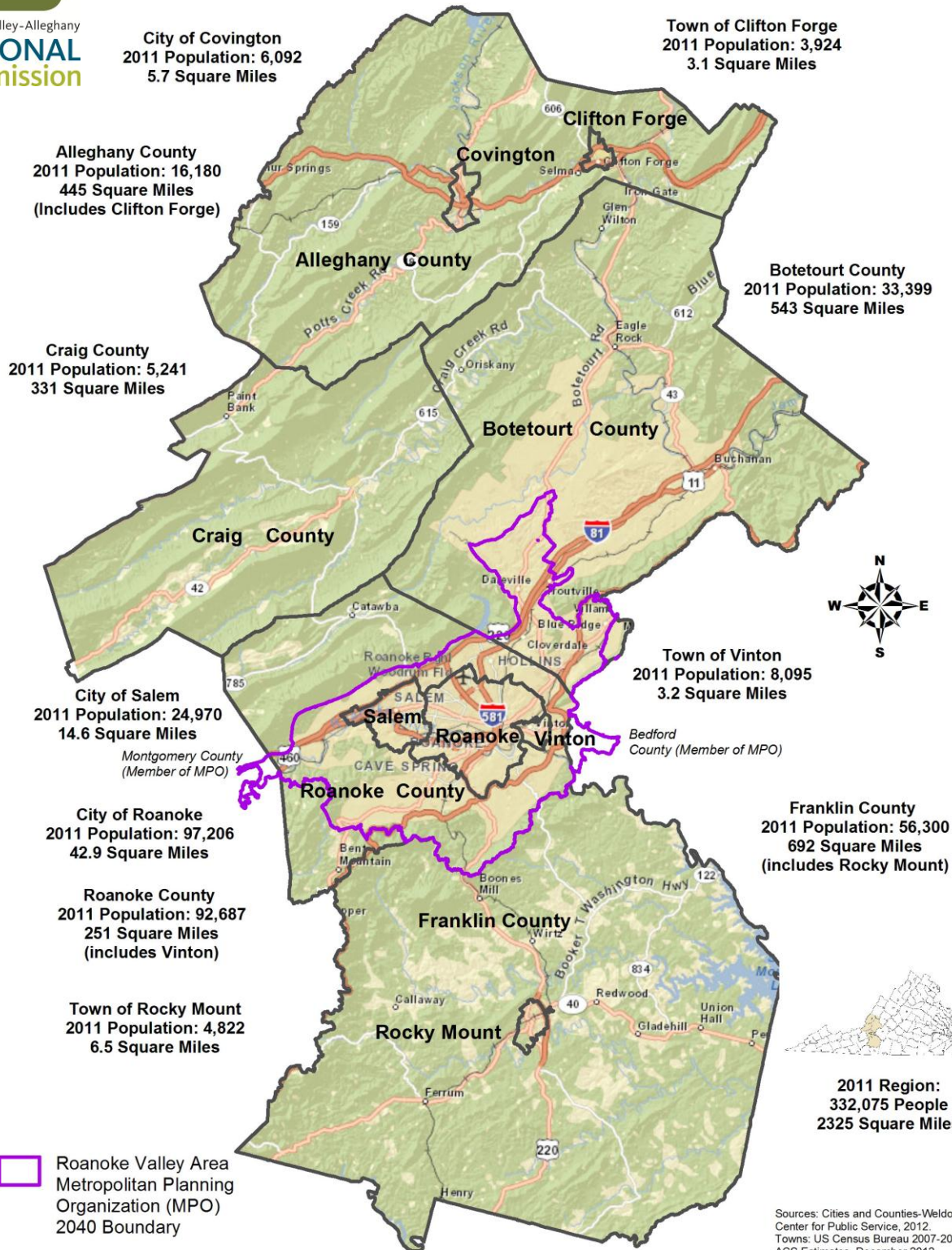
Jane Johnson, *Committee Chair* – City of Salem
Shannon Cox – Alleghany County
Steve Clinton – Botetourt County
Martha Murphy – Craig County
Charlotte Moore – Roanoke County
William B. Zimmerman, Jr. – City of Covington
Ray Ferris – City of Roanoke
Darlene Burcham – Town of Clifton Forge
James Ervin – Town of Rocky Mount
Mayor Brad Grose – Town of Vinton

Billy W. Martin, Sr. – Regional Commission Chairman (*Ex-Officio Member*)



Roanoke Valley-Alleghany Region

Roanoke Valley-Alleghany
REGIONAL
commission



ACRONYM DESCRIPTIONS

AICP	American Institute of Certified Planners
ARC	Appalachian Regional Commission
CEDS	Comprehensive Economic Development Strategy
CLRTP	Constrained Long Range Transportation Plan
CMAQ	Congestion Mitigation & Air Quality Improvement Program
CMP	Congestion Management Plan
CTB	Commonwealth Transportation Board
DEQ	Department of Environmental Quality
DHCD	Department of Housing & Community Development
EDA	Economic Development Administration
EDD	Economic Development District
EPA	Environmental Protection Agency
FHWA	Federal Highway Administration
FTA	Federal Transit Administration
GHG	Green House Gas
GIS	Geographic Information System
GRTC	Greater Roanoke Transit Company
HCS	Highway Capacity Software
HUD	Department of Housing & Urban Development
IMPLAN®	Impact Analysis for Planning Software
LRTDMP	Long Range Transportation Demand Management Plan
L RTP	Long Range Transportation Plan
MPO	Metropolitan Planning Organization
MSA	Metropolitan Statistical Area
NTD	National Transit Database
PDC	Planning District Commission
PL	Planning funds (<i>Virginia Department of Transportation</i>)
PM	Particulate Matter
PPB	Parts per Billion
PPP	Public Private Partnerships
RADAR	Roanoke Area Dial a Ride
RSTP	Regional Surface Transportation Program
RVARC	Roanoke Valley-Alleghany Regional Commission
RVAMPO	Roanoke Valley Area Metropolitan Planning Organization
SPR	State Planning Research funds (<i>Virginia Department of Transportation</i>)
SRTS	Safe Routes to School
TAZ	Transportation Analysis Zones
TE	Transportation Enhancement
TDM	Transportation Demand Management
TDP	Transit Development Plan
TIP	Transportation Improvement Program
TMA	Transportation Management Area
TMDL	Total Maximum Daily Load
UHSTS	Unified Human Services Transportation System
UZA	Urbanized Area Boundary
VAPDC	Virginia Association of Planning District Commissions
VDOT	Virginia Department of Transportation
VDRPT	Virginia Department of Rail & Public Transportation
VTRANS	Virginia Statewide Long-Range Transportation Plan

REGIONAL SUPPORT ACTIVITIES

(Projects involving two or more localities)



RVARC STRATEGIC PLAN IMPLEMENTATION PHASE I

The staff will facilitate discussions of possible shared services and procurement among member governments.

Work with member governments and the Roanoke Regional Partnership on expanding “Ready to Go” business/industrial parks by examining existing sites, providing research support when needed, helping to prepare grants, preparing GIS maps, and also provide technical support in any effort among local governments to jointly develop sites.

Staff will research the best approach for promoting internal marketing of the Roanoke Valley-Alleghany area and work with other regional organizations to determine the best way to pursue an internal marketing effort.

Localities Served: Cities of Covington, Roanoke and Salem, Counties of Alleghany, Botetourt, Craig, Franklin and Roanoke and the Towns of Clifton Forge, Rocky Mount and Vinton

Project Leader: Wayne Strickland

Funding Source & Estimated Hours: Local Governments – 110 hrs. (These activities could take more than 110 hours and it would require assistance from other staff members)

ECONOMIC DEVELOPMENT PLANNING

Staff will work with the localities to promote economic development in the region, including updating the annual report required by the Economic Development Administration; continue to support tourism initiatives with grant writing and coordination of project activities and work with the Work Force Development board as needed. Staff will also work with the various organizations in the region to examine workforce related issues such as the gap in skilled labor, the changing demand for specific skills in the labor force, future needs in workforce training, etc.

Localities Served: Cities of Covington, Roanoke and Salem, Counties of Alleghany, Botetourt, Craig, Franklin and Roanoke and Towns of Clifton Forge, Rocky Mount and Vinton

Project Leader: Eddie Wells

Funding Source & Estimated Hours: DHCD – 245 hrs., ARC – 95 hrs., Local Governments - 34

PARTNERSHIP FOR A LIVABLE ROANOKE VALLEY

The Partnership for a Livable Roanoke Valley seeks to promote economic opportunity and a greater quality of life for all Roanoke Valley residents through the development of the Valley's first coordinated regional plan. Central to the process will be identifying how local governments, businesses, and nonprofits can bring together their separate efforts to address issues of mutual concern.

The results of *Livable Roanoke Valley* will include the following:

A Better Understanding of Citizen's Values & Priorities. Through a series of intensive public workshops and a telephone survey of 1,000 citizens, attain a better understanding of the values, priorities, and opportunities for our region.

A Picture of Our Potential Futures. Develop stories about different futures for the Roanoke Valley based on an understanding of key trends in the region and nation. These are not predictions, but are possibilities that are dependent upon the choices we make going forward.

A Livability Strategy. Develop a small number of integrated strategies to increase jobs and the quality of life of our communities. These strategies will be tested to ensure that they can be successful, even in the face of future challenges.

Measures of Success. Key organizations and citizens will be given the information they need to track the success of the strategies and progress towards meeting our common goals.

Localities Served: Cities of Roanoke and Salem, Counties of Botetourt, Craig, Franklin and Roanoke and Town of Vinton

Project Leader: Jake Gilmer

Funding Source & Estimated Hours: HUD – 500 hrs., Local Governments – 100 hrs.

ROANOKE VALLEY BROADBAND/FIBER ANALYSIS PHASE II



Staff will continue to support local government efforts related to the regional high-speed broadband initiative by providing meeting coordination, grant writing and procurement of any additional professional services.

Localities Served: Cities of Roanoke and Salem, Counties of Botetourt and Roanoke and Town of Vinton

Project Leader: Matt Miller

Funding Source & Estimated Hours: DHCD – 90 hrs.

ROANOKE REGIONAL STORMWATER MANAGEMENT SUPPORT

Staff will coordinate support of the Roanoke Regional Stormwater Management and Technical Committees through activities such as updating local government staff in addressing the requirements of new stormwater regulations, determining stormwater-related activities that could be handled on a regional basis, coordinating the development of a regional stormwater advisory committee composed of businesses, non-profits and other stakeholders.

Localities Served: Cities of Roanoke and Salem, Counties of Botetourt, Franklin and Roanoke and the Town of Vinton

Project Leader: Shane Sawyer

Funding Source & Estimated Hours: DHCD – 115 hrs.

ROANOKE RIVER TMDL IMPLEMENTATION PLAN

Staff will continue to work with the consulting firm employed to do the TMDL Plan and the Department of Environmental Quality with development of a TMDL Implementation Plan in the Roanoke River Watershed.

Localities Served: Cities of Roanoke and Salem, Counties of Botetourt and Roanoke and Town of Vinton

Project Leader: Eddie Wells

Funding Source & Estimated Hours: DEQ - 7 hrs

UPPER JAMES RIVER RESOURCE & CONSERVATION EFFORT

Staff will continue to participate on the Upper James River Resource and Conservation Development board.

Localities Served: City of Covington, Counties of Alleghany, Botetourt and Craig, and Town of Clifton Forge

Project Leader: Shane Sawyer

Funding Source & Estimated Hours: Local Governments – 24 hrs.



ROANOKE RIVER PUBLIC BLUE WAY MAPPING

Staff will develop interactive and printable “Roanoke Valley Blue Way” maps for the Roanoke River from the Montgomery County/Roanoke County boundary to the Roanoke County/Franklin County boundary. Mapping will include river access points, amenities, way finding information, float times and distances, and other Blue Way information.

Localities Served: Cities of Roanoke and Salem, County of Roanoke and Town of Vinton

Project Leader: Shane Sawyer

Funding Source & Estimated Hours: Local Governments – 175hrs.

URBAN FORESTRY/TREE CANOPY PROTECTION

Staff will continue to participate in the Roanoke Valley Urban Forestry Council and work with local governments, the Virginia Department of Forestry and local stakeholders to maintain and protect the urban forest in the Roanoke Region and the associated benefits.

Localities Served: Cities of Roanoke and Salem, County of Roanoke and Town of Vinton

Project Leader: Shane Sawyer

Funding Source & Estimated Hours: Local Governments – 24 hrs.

REGIONAL LEADERSHIP COLLABORATION

Staff will coordinate and facilitate regular meetings of the Mayors and Chairs, as well as Chief Administrative Officials in the region. Staff will continue to work with the Regional Coalition for Economic Development on future leadership trips.

Localities Served: Cities of Covington, Roanoke and Salem, Counties of Alleghany, Botetourt, Craig, Franklin and Roanoke and the Towns of Clifton Forge, Rocky Mount and Vinton

Project Leader: Wayne G. Strickland

Funding Source & Estimated Hours: Local Governments – 121 hrs., ARC – 13 hrs.

REGIONAL ARTS AND CULTURAL ECONOMIC IMPACT ASSESSMENT

Staff will prepare a report showing the estimated economic impact that existing arts & cultural organizations have on the economy of the region.

Localities Served: Cities of Covington, Roanoke and Salem, Counties of Alleghany, Botetourt and Roanoke, the Towns of Clifton Forge and Vinton

Project Leader: Matt Miller

Funding Source & Estimated Hours: Local – 145 hrs.

ASSISTANCE TO THE BLUE RIDGE INTERAGENCY COUNCIL ON HOMELESSNESS

Staff will continue coordination of the Interagency Council and related tasks as needed to encourage and facilitate cooperation between local governments, service providers and community based organizations to address homelessness in the Blue Ridge Continuum of Care region.

Localities Served: Cities of Covington, Roanoke and Salem, Counties of Alleghany, Botetourt, Craig, and Roanoke and Towns of Clifton Forge and Vinton

Project Leader: Shane Sawyer

Funding Source & Estimated Hours: DHCD – 87 hrs., ARC - 13

REGIONAL PLANNERS TRAINING

Staff will coordinate and facilitate training sessions to assist planners in remaining abreast of current planning issues and best practices and to maintain AICP certification.

Localities Served: Cities of Covington, Roanoke and Salem, Counties of Alleghany, Botetourt, Craig, Franklin and Roanoke and the Towns of Clifton Forge, Rocky Mount and Vinton

Project Leader: Eddie Wells

Funding Source & Estimated Hours: Local Governments – 48 hrs.



GENERAL TECHNICAL ASSISTANCE

The staff will research, develop, maintain, and analyze data for use in a variety of technical support and planning support activities, including legislative issues relevant to the region.

Localities Served: Cities of Covington, Roanoke and Salem, Counties of Alleghany, Botetourt, Craig, Franklin and Roanoke and the Towns of Clifton Forge, Rocky Mount and Vinton

Project Leader: Staff

Funding Source & Estimated Hours: Local Governments – 241 hrs., ARC – 141 hrs.

GRANT WRITING

The staff will continue to provide assistance to localities in writing grant applications and researching funding opportunities for regional and local development projects. Project includes attendance at grant workshops.

Localities Served: Cities of Covington, Roanoke and Salem, Counties of Alleghany, Botetourt, Craig, Franklin and Roanoke and the Towns of Clifton Forge, Rocky Mount and Vinton

Project Leader: Staff

Funding Source & Estimated Hours: DHCD – 149 hrs., ARC – 74 hrs.

IMPLAN®

Staff will assist localities and regional partners with estimating economic impact of a variety of projects and events upon request.

Localities Served: Cities of Covington, Roanoke and Salem, Counties of Alleghany, Botetourt, Craig, Franklin and Roanoke and Towns of Clifton Forge, Rocky Mount and Vinton

A request has been received from the New River Valley PDC to assist them with an economic impact assessment of Radford University. The Regional Commission would subcontract with the New River Valley PDC to analyze the economic impact of the University on the regional economy.

Localities Served: Radford University and surrounding localities

Project Leader: Matt Miller

Funding Source & Estimated Hours: 85 hrs.

PUBLIC RELATIONS AND OUTREACH

The staff will continue with publication of brochures, newsletters, website update, social media and other outreach activities to promote activities and programs of the Commission. Staff will continue implementing the Public Relations and Communications Plan.

Localities Served: Cities of Covington, Roanoke and Salem, Counties of Alleghany, Botetourt, Craig, Franklin and Roanoke and the Towns of Clifton Forge, Rocky Mount and Vinton.

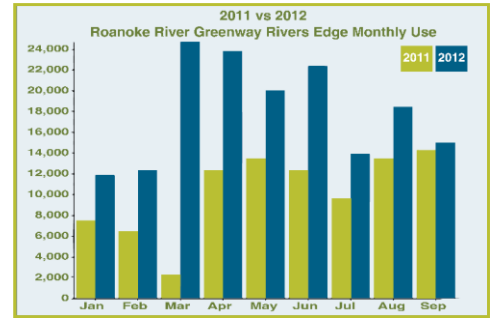
Project Leader: Tyler Godsey

Funding Source & Estimated Hours: Local Governments – 215 hrs., ARC 65 hrs.

STATE DATA CENTER

Staff will continue its role as regional clearinghouse for demographic and economic development information and related data.

- Disseminate data from the 2010 Census and American Community Survey.
- GRANT System - Staff will compile an email distribution list of local government staff and other interested parties from the region and electronically distribute notices of relevant grant opportunities from federal and state agencies as well as private foundations.
- Regional Intern Program - Staff will manage the Commission's internship program and formulate formal procedures and policies regarding application to the program, attendance, and supervision.
- Regional Planning Library – Staff will continue to maintain and improve library organization and operation to increase its usefulness to Commission members, businesses, and citizens in the region.



Localities Served: Cities of Covington, Roanoke and Salem, Counties of Alleghany, Botetourt, Craig, Franklin and Roanoke and the Towns of Clifton Forge, Rocky Mount and Vinton

Project Leader: Staff

Funding Source & Estimated Hours: DHCD – 150 hrs.

RIDESHARING/ALTERNATIVE TRANSPORTATION PROJECTS



Staff will continue to operate RIDE Solutions, the regional transportation demand management (TDM) program, to create a greater public awareness of commuting options to address air quality and other environmental issues, as well as stimulate economic vitality by offering a cost-saving alternative to driving alone. The program's work will include, but not be limited to, the following areas:

- Promote TDM strategies through traditional marketing and outreach efforts. Emphasize employer outreach and partnerships as the primary deployment of TDM strategies in the region, with particular emphasis on the creation of commuter choice incentives such as the tax-deferred transit and vanpool benefits.
- Act as the regional coordinator for the Telework!VA program to promote telework as a commute option. Find creative applications for Telework!VA incentives, including marketing the region as a destination for Northern Virginia teleworkers wanting to relocate but retain their current jobs.
- Manage the RIDE Solutions database carpool-match database, Guaranteed Ride Home benefit, web pages, general on-line presence, member's needs, grant writing, bookkeeping, advertising, public outreach, and information requests. Provide other survey and statistical analysis for the region's public transportation and park-and-ride systems.
- Determine the demand for possible ridesharing in the Franklin County area.

- Support regional pursuit of the League of American Bicyclists' Bicycle Friendly Community and Bicycle Friendly Business designation by continued staff support on working groups and by offering consultation services to governments and businesses that are completing their applications.
- Organize and promote regional Bike Month events.
- Continue focus on transit support in the three regions served by RIDE Solutions.

Localities Served: Cities of Bedford, Covington, Lynchburg, Radford, Roanoke and Salem, Counties of Alleghany, Amherst, Appomattox, Bedford, Botetourt, Campbell, Craig, Floyd, Franklin, Giles, Montgomery, Pulaski and Roanoke, Towns of Alta Vista, Amherst, Appomattox, Blacksburg, Brookneal, Christiansburg, Clifton Forge, Dublin, Pearisburg, Rocky Mount and Vinton

Project Leader: Jeremy Holmes

Funding Source & Estimated Hours: Local Governments – 478 hrs., VDRPT - 913 hrs.

SAVE-A-TON MARKETING CAMPAIGN



Staff will manage website content for the regional Save-a-Ton marketing campaign. Save-a-Ton connects citizens to local energy savings solutions through a regional marketing campaign that drives customers to the saveaton.org website, which serves as a one-stop portal for services and strategies to save money on energy costs. Staff will work with an executive and advisory committee of local governments and other stakeholders to keep website content updated and current, and to assist a marketing subcommittee with the execution of the regional marketing campaign.

Localities Served: Cities of Roanoke and Salem, the County of Roanoke and Town of Vinton

Project Leader: Jeremy Holmes

Funding Source & Estimated Hours: Local Governments – 52 hrs.

VOLUNTEERS FOR ENERGY PROGRAM

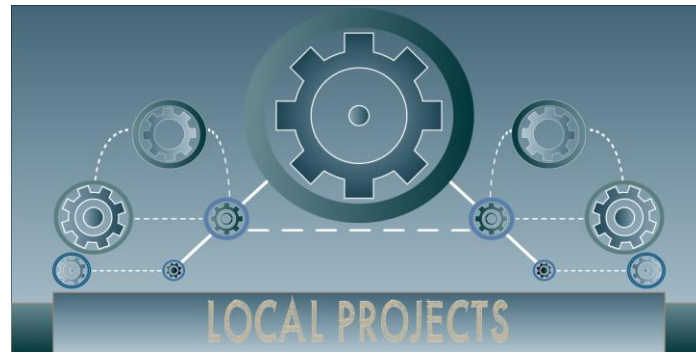
Staff will continue with follow up assessments on audits that have been previously completed to determine what suggestions were implemented and what the cost savings have been.

Localities Served: Cities of Covington, Roanoke and Salem, Counties of Alleghany, Botetourt, Craig, Franklin and Roanoke and the Towns of Clifton Forge, Rocky Mount and Vinton

Project Leader: Tyler Godsey

Funding Source & Estimated Hours: Local Governments – 20 hrs.

LOCAL PROJECTS



ALLEGHANY GENERAL TECHNICAL ASSISTANCE

Staff will assist the County with review and update of its Emergency Operations Plan.

Staff will assist the County with a review of existing zoning and subdivision ordinances to ensure compliance with State Code Requirements.

Project Leader: Eddie Wells

Funding Source & Estimated Hours: Local Governments – 55 hrs., ARC – 55 hrs.

BOTETOURT COUNTY STRATEGIC TRAIL PLAN

Staff will assist the County stakeholder group with implementation of a Strategic Trail Plan.

Project Leader: Shane Sawyer

Funding Source & Estimated Hours: Local Governments – 50 hrs., ARC – 50 hrs.

CLIFTON FORGE TECHNICAL ASSISTANCE

Staff will assist the Town with grant writing to fund development of the old Clifton Forge High School & East Elementary School buildings into housing.

Project Leader: Eddie Wells

Funding Source & Estimated Hours: Local Governments – 20 hrs., ARC – 20 hrs.

COVINGTON TECHNICAL ASSISTANCE

Staff will assist the City with planning for revitalization and rehabilitation of the historic downtown area.

Project Leader: Eddie Wells

Funding Source & Estimated Hours: Local Governments – 55 hrs., ARC – 55 hrs.

FRANKLIN COUNTY TECHNICAL ASSISTANCE

Staff will assist the County and the Town of Rocky Mount with a study of residential, commercial and industrial demand for natural gas in the U.S. 220 corridor.

Localities Served: County of Franklin

Project Leader: Matt Miller

Funding Source & Estimated Hours: Local Governments – 50 hrs.

TOWN OF ROCKY MOUNT

Staff will assist the Town with an update to its comprehensive plan mapping.

Localities Served: Town of Rocky Mount

Project Leader: Eddie Wells

Funding Source & Estimated Hours: Local Governments – 50 hrs.

TOWN OF VINTON

Staff will assist the Town with a feasibility study to identify development options for the former Roland E. Cook Elementary School.

Localities Served: Town of Vinton

Project Leader: Eddie Wells

Funding Source & Estimated Hours: Local Governments – 50 hrs.

OTHER



NATIONAL, STATE, REGIONAL AND LOCAL COLLABORATIVE EFFORTS

Staff will promote and assist with regional planning initiatives by participating in the following local, regional, state and national organizations.

National

- National Association of Development Organizations Board
Southeastern Regional Directors Institute Board
- Development District Association of Appalachia and Network Appalachia

State

- American Planning Association, Virginia Chapter: New River Valley - Roanoke Section
- Bike Virginia Board
- Virginia Association of Metropolitan Planning Organizations
- Virginia Association of Planning District Commissions
- Virginia Association of Zoning Officials
- Virginia Citizens Planning Education Association of Virginia Board of Directors
- Virginia Department of Conservation and Recreation, Recreational Trails Advisory Committee
- Virginia Department of Rail and Public Transportation (DRPT) Statewide Multi-Modal and Public Space Design Guidelines committee

Regional

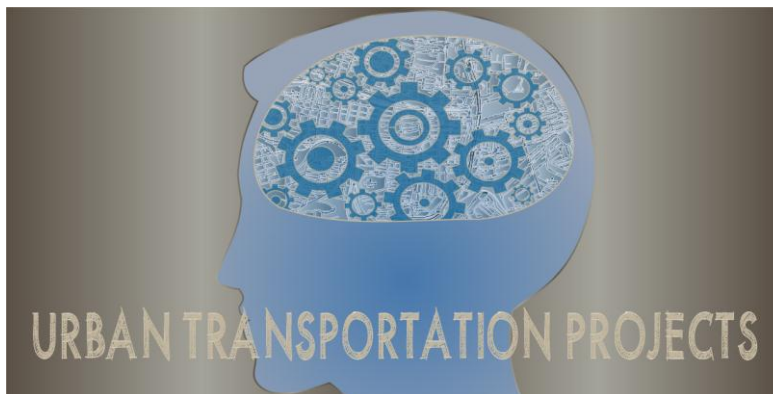
- AECP/ES Green Living and Energy Expo Planning Committee
- Blue Ridge Transportation Safety Board
- Blue Ridge Interagency Council of Homelessness
- Citizens for Clean and Green Sustainability Committee
- Cool Cities Coalition
- Council of Community Services Board
- Greater Roanoke Valley Asthma and Air Quality Coalition
- I-81 Corridor Coalition
- Pathfinders for Greenways Board
- Regional Bicycle Advisory Committee
- Regional Stormwater Technical Committee

- Partnership for a Livable Roanoke Valley
- Roanoke Regional Chamber of Commerce Board
- Roanoke Regional Housing Network
- Roanoke Valley Area GIS Managers Users Group
- Roanoke Valley Greenway Commission
- Roanoke Valley Urban Forestry Council
- Salem-Roanoke County Chamber of Commerce
- Senior Citizens Coordination Council
- Trans-Dominion Express Committee
- United Way of the Roanoke Valley Board
- United Way Community Investment Panel
- Upper Roanoke River Roundtable Advisory Committee
- Upper James River Resource Conservation and Development District (RC&D)
- Virginia Western Community College
- Virginia Western Community College-Integrated Environmental Studies Advisory Group
- Virginia Western Community College – Geospatial Program Lay Advisory Committee

Local

- City of Roanoke Bicycle Friendly Community Advisory Committee
- City of Roanoke Bicycle Friendly Community Advisory Committee – Increasing Bicycle Use Subcommittee
- City of Roanoke Downtown Mobility Workgroup
- City of Roanoke School System ROTEC Advisory Committee
- Citizens for Clean & Green
- Vinton Downtown Revitalization Committee
- Virginia’s Western Highlands Travel Council

URBAN TRANSPORTATION PROJECTS



LONG-RANGE TRANSPORTATION PLANNING

The next Constrained Long-Range Transportation Plan (CLRTP 2040) must be completed and adopted by the summer of 2015. FY 2014 CLRTP activities will focus on technical aspects of the planning process and FY 2015 activities will focus on writing the CLRTP 2040 narrative and the public involvement process.

- 1) **CLRTP 2035 Amendments:** Any additional activities required for any potential amendments or adjustments to CLRTP 2035, in order to reflect additional funds than could be added to the original financial constraint.
- 2) **Transportation Performance Measures:** Integration and tracking of appropriate long-range transportation planning performance measures into the CLRTP 2040 process.
- 3) **Air Quality and Environmental Analysis:** All applicable air-quality or environmental analyses that may be required by the federal EPA. Currently, RVAMPO is in an Ozone Early Action Compact – Early Action Plan area and is not subject to conformity analysis. However, this situation could change with the introduction of new federal standards.
- 4) **Official Public Meeting Concerning Long-Range Planning Assumptions:** This will be the seventh in a series of yearly public meetings concerning the long-range planning process and its assumptions.
- 5) **Scenario Planning:** The Partnership for a Livable Roanoke Valley <http://livableroanoke.org/> is developing a planning process resulting from a joint USDOT, EPA and HUD Sustainability Grant. The Livable Roanoke process will be completing its 3-year planning process in FY 2014. It is anticipated that the Livable Roanoke Valley process will develop and publish a set of 4 in-depth future scenarios that can be used for a variety of planning processes including long-range transportation planning.
- 6) **Transportation and Land Use Archival System Maintenance:** A yearly update of the transportation and land use data archival system for updating transportation and land use data on a regular basis so that “time series” or “snapshot” data analysis can be performed in future long-range transportation planning processes.

- 7) **TAZs, Socioeconomic Data and Model Network:** In partnership with the local governments and VDOT, RVAMPO staff will finalize the CL RTP 2040 Transportation Analysis Zones (TAZs), the socioeconomic data within the TAZs and the CL RTP 2040 transportation network.
- 8) **Feasibility of formal “Mode Choice” step in regional Travel Demand Model:** In partnership with VDOT and VDRPT, RVAMPO staff will evaluate the feasibility of recommending that a formal “mode choice” step be added to the Travel Demand Model.
- 9) **Public Private Partnerships (PPP) Integration:** Any staff actions necessary to integrate potential PPP projects into the CL RTP 2040 fiscal constraint if applicable.

Localities Served: Cities of Roanoke and Salem, Counties of Bedford, Botetourt, Montgomery and Roanoke, and Town of Vinton

Project Leader: Mark McCaskill

Funding Source & Estimated Hours: PL – 875 hrs., FTA – 79 hrs., Local Governments – 105 hrs.

TRANSPORTATION IMPROVEMENT PROGRAM (TIP), REGIONAL SURFACE TRANSPORTATION PROGRAM (RSTP), TRANSPORTATION ALTERNATIVES (TA) AND PERFORMANCE MEASURES REPORTING

Staff will develop a new TIP, the annual listing of projects with federal obligations (federal funds), collect data and analyze for annual listing of performance measures, prepare TIP process for anticipated incorporation of RSTP and CMAQ funds in future TIPs.

Additional activities covered in this task may include but are not limited to:

- Preparation of TIP process for anticipated RSTP and potential CMAQ requirements.
- Data collection and analysis for yearly Performance Measures update.
- Coordination with VDOT on TIP, STIP and Six Year Improvement Program (SYIP) details, procedures and updates.
- Coordination with FTA, VDRPT, Valley Metro (GRTC) and RADAR (UHSTS) on public transportation related programming with regards to SYIP and TIP issues.
- Development of GIS layers to display TIP projects
- Staff evaluation and testing of web technology to display TIP projects
- Staff evaluation and/or development of an in house TIP database/project tracking system.
- Publication of the Annual Obligations Report.

Localities Served: Cities of Roanoke and Salem, Counties of Bedford, Botetourt, Montgomery and Roanoke, and Town of Vinton

Project Leader: Cristina Finch

Funding Source & Estimated Hours: PL – 534 hrs., FTA – 90 hrs., Local Governments – 69 hrs.

SUSTAINABLE COMMUNITIES REGIONAL PLANNING GRANT PROGRAM (PARTNERSHIP FOR A LIVABLE ROANOKE VALLEY), PUBLIC PARTICIPATION, ENVIRONMENTAL JUSTICE, STAKEHOLDER TRAINING AND SEMINARS

The Partnership for a Livable Roanoke will employ a large public and stakeholder engagement effort that potentially will incorporate a variety of public involvement opportunities within the RVAMPO study area as a form of in-kind effort between the Partnership for a Livable Roanoke Valley and the RVAMPO planning process. The intention is that the Partnership for a Livable Roanoke Valley outreach will also serve as a forum where public and stakeholder input concerning regional transportation issues will also be obtained, thereby, extending the reach and effectiveness of the traditional RVAMPO public involvement process.

In addition to the Partnership for a Livable Roanoke Valley outreach activities, traditional RVAMPO public and stakeholder involvement activities will include but are not limited to the following:

- 1) **Focus Groups or Neighborhood Group Discussions:** Staff will continue to schedule a series of focus groups with neighborhood groups, civic leagues and/or other defined groups.
- 2) **MPO Website Strategy:** The RVAMPO website should be periodically reevaluated and updated to ensure a smooth user interface. Staff will research and begin to implement “Web 2.0” public participation strategies.
- 3) **MPO Demographic Profiles:** RVAMPO Demographic Profiles will be updated depending on suitability of US Census Bureau, American Community Survey data.
- 4) **Webinars, Teleconferences and Seminars:** RVAMPO staff will select relevant MPO related teleconferences and make arrangements to host a teleconference download site for local planners, citizens and other interested parties. A discussion will follow each teleconference concerning how RVAMPO staff may apply concepts from the teleconference in the long-range planning process.
- 5) **RVAMPO Public Involvement Policy and Title VI Plan Updates:** Any applicable updates to either the RVAMPO Public Involvement Policy or RVAMPO Title VI Plan.
- 6) **Citizens (Community) Advisory Committee (CAC) Restoration:** The citizens advisory group to the RVAMPO has alternatively been called the Community Advisory Committee or the Citizens Advisory Committee in the past. The CAC will be restored and begin to function anew in FY 2014.

Localities Served: Cities of Roanoke and Salem, Counties of Bedford, Botetourt, Montgomery and Roanoke, and Town of Vinton

Project Leader: Mark McCaskill

Funding Source & Estimated Hours: PL – 640 hrs., Local Governments – 71 hrs.

AIR QUALITY PLANNING

The Federal EPA has announced its intention to further revise the 8-hour Ozone standard to a value within the 60 ppb to 70 ppb range, to be announced in the summer of 2013. Staff has begun the groundwork to monitoring both fine particulate PM2.5 and initial research into Greenhouse Gasses

(GHGs) should action or compliance be required for those two classes of pollutants in addition to ground level Ozone.

Localities Served: Cities of Roanoke and Salem, Counties of Botetourt and Roanoke, and Town of Vinton

Project Leader: Mark McCaskill

Funding Source & Estimated Hours: PL – 248 hrs., Local Governments – 27 hrs.

CORRIDOR STUDIES, AREA STUDIES AND SAFETY PLANNING

Staff will analyze the following corridors and areas suggested by local governments and other stakeholders. Analysis of each corridor or area may include: access management, corridor simulation (software), intersection evaluation, operations evaluation, transit/bicycle/pedestrian connections and parking availability/accessibility/issues.

- Exit 150 small area transportation and land-use analysis/master plan
- US 11 / 460 west of Salem to study area boundary Phase II
- City of Roanoke Downtown Parking Study Phase III
- Synchro and/or HCS corridor analysis

Localities Served: Cities of Roanoke and Salem, and Counties of Roanoke and Botetourt

Project Leader: Mark McCaskill

Funding Source & Estimated Hours: PL – 626 hrs., Local Governments – 69 hrs.

RVAMPO BICYCLE, PEDESTRIAN, GREENWAY AND TRAILS PLANNING

Staff will focus on non-motorized transportation planning and infrastructure related to non-motorized modes of transportation.

- 1) **Regional Pedestrian Plan** – Staff will develop an MPO area pedestrian plan that combines elements from the regional greenway master plan and regional corridor and area studies into one overall pedestrian plan. The regional pedestrian plan will include sidewalk, greenway, trails, paths and other pedestrian related infrastructure.
- 2) **Regional Pedestrian/Bicycle Advisory Board** - Staff will continue to participate in the recently created Regional Pedestrian/Bicycle Advisory Committee, City of Roanoke BAC, Regional Greenway Commission, Regional Greenway Commission Standards and Design Subcommittee, Joint Greenway Commission-Pathfinders Marketing, PR and Education Subcommittee and other committees as appointed.
- 3) **General Assistance to Local Governments and Greenway Commission** – MPO Staff assistance, public information materials design, and other areas as necessary.
- 4) **Mapping Assistance to Local Governments and Greenway Commission** – MPO staff will assist with greenway mapping needs.
- 5) **Website Assistance to Greenway Commission** - Staff will assist Greenway Commission in updating maps, graphics, illustrations and other aspects of Greenway Commission website.
- 6) **Grant Assistance for Greenway Development** – Staff will assist the Regional Greenway Commission with identifying and pursuing state, local, federal and private grants for greenway implementation.

- 7) **Continued Greenway Monitoring and Trail User Counts** – Staff will continue to expand the greenway usage monitoring/estimation system for using during all seasons. Monitoring system will include deployment of additional trail counters and other monitors as available.
- 8) **City of Roanoke Bike Lanes and Bicycle Usage Counts** – RVAMPO will partner with the City of Roanoke to develop base line bicycle usage counts for recently installed bike lanes and other facilities.
- 9) **Botetourt County Strategic Trail Plan and Mapping Assistance** – Staff will assist Botetourt County with trail planning and mapping assistance within the RVAMPO.

Localities Served: Cities of Roanoke and Salem, Counties of Botetourt and Roanoke, and Town of Vinton

Project Leader: Shane Sawyer

Funding Source & Estimated Hours: PL – 887 hrs., Local Government – 98 hrs.

GENERAL TECHNICAL ASSISTANCE & TECHNICAL SUPPORT ACTIVITIES

Staff will research, develop, maintain, and analyze data for use in a variety of technical support and planning support activities. Work activities will be organized around the following subtasks.

- **General Technical Assistance** to local governments, planners and citizens as requested.
- **Technical Support Activities** – a variety of planning support activities to support work program projects and/or the general planning process (i.e., turning movement counts).
- **Support to Statewide Multimodal Planning** – as needed

Localities Served: Cities of Roanoke and Salem, Counties of Bedford, Botetourt, Montgomery and Roanoke, and Town of Vinton

Project Leader: Staff

Funding Source & Estimated Hours: PL – 755 hrs., FTA – 100 hrs., Local Governments Local Governments – 95 hrs.

PUBLIC TRANSPORTATION PLANNING ASSISTANCE

Staff will assist the two major public transportation agencies, Valley Metro (GRTC) – fixed route transit – and RADAR (UHSTS) – with regularly required transportation planning assistance to complete a variety of functions and plan for service enhancements.

- **National Transit Database (NTD) on-board survey support** – Staff will be responsible for accomplishing approximately half of the on-board surveys, and for collecting and analyzing the resulting data.
- **Regional Transit Vision Plan** – Staff will partner with GRTC, RADAR and local governments to develop a regional transit vision plan that includes a vision for future transit service, transit coverage and transit operations.
- **Transit Development Plans (TDP) Assistance** – Staff will assist with plan review, amendments, analysis or updates needed by either Valley Metro or Radar.
- **Transit Route Analysis and Mapping Assistance** – for both Valley Metro and RADAR pending updated transit route or schedules.

- **Human Services-Public Transit Coordinated Transportation Planning** - In FY2009, the Virginia Department of Rail and Public Transportation (VDRPT) updated the existing Human Services-Public Transit Coordinated Transportation Plan for the Planning District Commission that encompasses the RVAMPO. There will likely be plan adoption procedures, plan review and/or plan amendments needed in FY 2014.
- **Google Transit Data Maintenance** – Staff will take over GRTC data related to their presence on Google Transit. Staff will maintain and update data as needed to ensure Google Transit searches yield relevant results for the RVAMPO.
- **Assistance with Planning Bus Stop Improvements** – Staff assistance related to the location, accessibility and improvements to fixed route bus stops.
- **Passenger Rail and Public Transit Coordination** – any needed analysis or assistance regarding anticipated return of intercity passenger rail to Roanoke by 2016.

Localities Served: Cities of Roanoke and Salem, Counties of Craig and Roanoke, and Town of Vinton

Project Leader: Cristina Finch

Funding Source & Estimated Hours: FTA – 1,746 hrs., Local Governments – 194 hrs.

CONGESTION MANAGEMENT PROCESS (CMP) – PHASE II

RVAMPO became officially designated as a Transportation Management Area (TMA) in FY 2013. MPOs that are also TMA's are required to develop a Congestion Management Process (CMP) plan for the MPO. A CMP plan will include the following elements:

- Development of congestion management objectives;
- Establishment of measures of multimodal transportation system performance;
- Collection of data and system performance monitoring to define the extent and duration of congestion and determine the causes of congestion;
- Identification of congestion management strategies;
- Implementation plan for activities, including identification of an implementation schedule and possible funding sources for each strategy; and,
- Evaluation of the effectiveness of implemented strategies.

Localities Served: Cities of Roanoke and Salem, Counties of Bedford, Botetourt, Montgomery and Roanoke, and Town of Vinton

Project Leader: Mark McCaskill

Funding Source & Estimated Hours: PL – 504 hrs., Local Governments – 56 hrs.

RURAL TRANSPORTATION PROJECTS



RURAL PUBLIC TRANSPORTATION

Staff will assist with planning and development of rural public transportation service in the region. This will include the following projects:

- **Regional Transit Vision Plan** - Staff will partner with GRTC, RADAR, DRPT, and local governments, to develop a regional transit vision plan that includes a vision for future transit service, transit coverage, and operations. The plan will cover the entire Regional Commission service area and will also be supported by the Roanoke Valley Area MPO.
- **Craig County Public Transportation Service** – Staff will assist the County in the development of new public transportation service in Craig County if approved by County officials
- **Mountain Express Service** – Review of the Mountain Express service in the Alleghany Highlands and changes to service map and flyer.
- **Clifton Forge Projects** – Relocation of the AMTRAK passenger rail station and possible shuttle service between Douthat State Park and Clifton

Localities Served: City of Covington and Counties of Alleghany, Botetourt, Craig and Town of Clifton Forge

Project Leader: Jake Gilmer

Funding Source & Estimated Hours: SPR – 224 hrs., Local Governments – 56 hrs.

BICYCLE AND PEDESTRIAN PLANNING

Staff will assist with planning and development of non-motorized transportation infrastructure, such as sidewalks, trails, greenways, bike lanes, and other facilities. This will include the following projects:

- **Pedestrian Infrastructure Mapping** - Identify gaps in pedestrian infrastructure such as missing sidewalk segments. Provide a shape file with lat/long locations to include whether the gap is located adjacent to the roadway.
- **Botetourt County Trail Development** – Planning and development services to implement the trail plan that was developed with the assistance of RVARC staff in 2012. Continue trail counts within the Carvins Cove Nature Reserve.

- **Craig County Greenway Development** – Planning and development assistance for a greenway to connect downtown New Castle with the Craig County Sports Complex.
- **Technical assistance as needed**

Localities Served: City of Covington, Counties of Alleghany, Botetourt and Craig

Project Leader: Shane Sawyer

Funding Source & Estimated Hours: SPR – 300 hrs., Local Governments – 75 hrs.

CORRIDOR STUDIES & TRAFFIC ANALYSIS

Staff will analyze of existing and future corridor conditions, as well as the evaluation of traffic conditions at specific intersections or proposed developments. This will include the following projects:

- **Route 122 Corridor Review** – Inventory of the existing conditions from Burnt Chimney to Bedford County, including analysis of average daily traffic, level-of-service, accidents, driveway entrances, and right-of-way widths.
- **Rocky Mount Site Review** – Evaluate the possible traffic impacts for a variety of potential uses on a commercial property in Rocky Mount. Recommend potential on-site and off-site improvements that may be needed.

Localities Served: County of Franklin and Town of Rocky Mount

Project Leader: New Planner

Funding Source & Estimated Hours: SPR – 200 hrs., Local Governments – 50 hrs.

VDOT OUTREACH MEETINGS & DATA REVIEW

Staff will participate in outreach meetings and review data as requested by VDOT throughout the fiscal year pertaining to:

- VTrans Update
- Functional Classification Update
- Virginia Surface Transportation Plan Update (VSTP)
- Park and Ride Lots Inventory / Study
- Bicycle and Pedestrian planning
- Freight planning
- Other meetings as requested

Localities Served: City of Covington, Counties of Alleghany, Botetourt, Craig and Roanoke, and Town of Clifton Forge

Project Leader: Jake Gilmer

Funding Source & Estimated Hours: SPR – 80 hrs., Local Governments – 20 hrs.

GENERAL TECHNICAL ASSISTANCE

Staff will research, develop, maintain, and analyze data for use in a variety of technical support and planning support activities. Work activities will be organized around the following subtasks.

- **General Technical Assistance** to local governments, planners and citizens as requested.
- **Technical Support Activities** – a variety of planning support activities to support work program projects and/or the general planning process (i.e. turning movement counts).
- **Regional Greenways Mapping Assistance** – GPS and mapping assistance.
- **Transportation Alternative Assistance** – Local government assistance on the preparation of Transportation Alternative (TA) grants as needed.
- **Review of Traffic Impact Analysis** – Assist local governments in their review and consideration of traffic impact analysis, as required under Chapter 527 regulations.
- **VTRANS Performance Measures** - Assist VDOT with the collection of data relevant to VTRANS 2035 performance measures.

Localities Served: City of Covington, Counties of Alleghany, Craig and Roanoke and Town of Clifton Forge

Project Leader: Jake Gilmer

Funding Source & Estimated Hours: SPR – 50 hrs., Local Governments – 12 hrs.