

RACE
RVAMPO Demographic Profile



FY 2004-2005

Introduction

Staff of the Roanoke Valley – Alleghany Regional Commission (RVARC), the lead staffing agency of the Roanoke Valley Area Metropolitan Planning Organization (RVAMPO), is in the process of generating a series of demographic profiles to identify special needs populations in the region. Racial minorities certainly represent several such special needs groups within the RVAMPO region.

Before delving into statistical figures, some background information is in order. Federal non-discrimination authorities provide for the protection of several special needs populations from either intentional or unintentional discrimination by any federal agency or recipient/sub-recipient of federal funds. Specifically, Title VI of the Civil Rights Act of 1964 and its implementing regulations prohibit recipients of federal financial assistance from intentionally or unintentionally discriminating on the basis of race, color, or national origin.

What does this mean to the RVAMPO?

The RVAMPO must take steps to ensure that it is not unintentionally discriminating against certain racial groups in any of its activities. The most likely scenario for any unintentional discrimination might involve a recommendation in a transportation plan that would lead to a disproportionate impact on a minority population. Therefore, RVAMPO staff must consult these demographic profiles when conducting planning exercises and studies to ensure that such groups are not affected disproportionately. These profiles should also be provided to the MPO Policy Board and to advisory committees as information in the decision-making process. Another implication of the Title VI regulations for the RVAMPO is that staff must attempt to keep minority groups informed regarding upcoming public meetings and comment sessions.

Information of the type included in this demographic profile can also be used to better target community outreach efforts made to minority groups. If it is identified early on in the planning process that a minority neighborhood would be particularly affected by a project or measure being considered in a plan, then special means can be used to attempt to attract that group's participation and input in the planning process.

The following table can be used for reference and for general information regarding the size and character of the RVAMPO's population of racial minorities. This table demonstrates that the largest racial minority group within the RVAMPO service area is the 'Black or African American Alone' group at 13.15% of the total RVAMPO population. The second and third largest minority groups are the 'Two or More Races' group and the 'Asian Alone' group at 1.33% and 1.06% respectively.

Table 1: RVAMPO Racial Demographics

White Alone	192,455	83.63%
Black or African American Alone	30,272	13.15%
American Indian and Alaska Native Alone	437	0.19%
Asian Alone	2,443	1.06%
Native Hawaiian or Other Pacific Islander Alone	90	0.04%
Some Other Race Alone	1,357	0.59%
Two or More Races	3,068	1.33%
Total	230,122	100%

The maps included in the appendix yield information regarding the geographic concentrations of these groups and can also be used for planning purposes to ensure that certain, planned projects do not lead to high and disproportionate impacts upon racial groups.

MPO staff recommends that the MPO review this profile when conducting planning exercises and preparing plans to ensure that no group is disproportionately affected by any planned projects. Furthermore, it is recommended that this profile be used to target minority outreach/public involvement efforts made by MPO staff.

With these measures, the MPO should not only be in compliance with Title VI provisions dealing with race, but also will be ensuring that all regional citizens are getting their fair chance to voice their opinions and have input into the transportation planning process.

APPENDIX

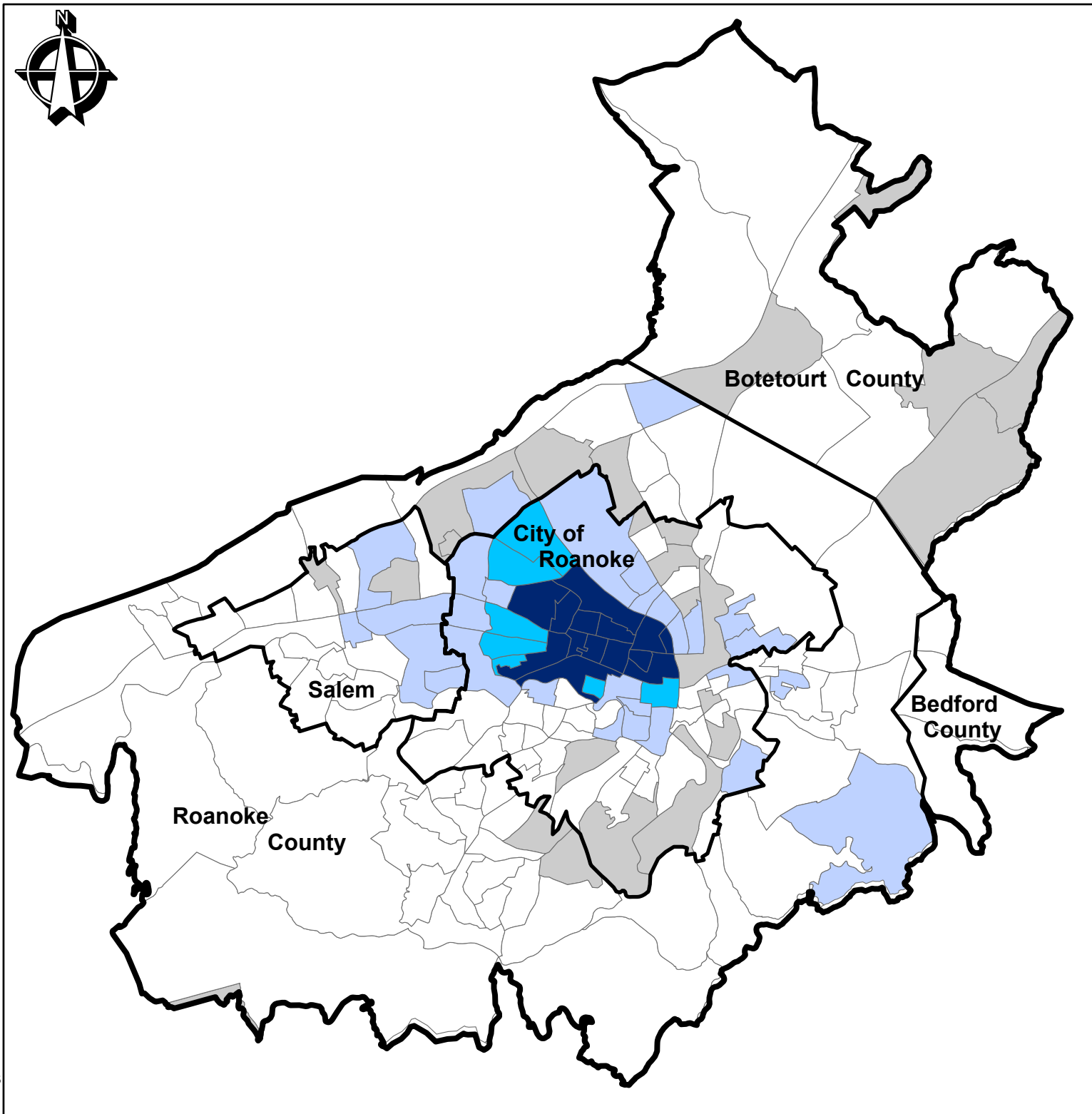
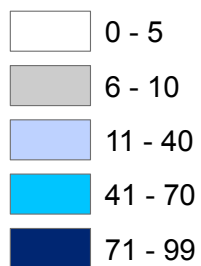
Demographic Profile

Map 1
Percent African American
By Block Group
Within MPO
2025 Study Area



Legend

Percent African-American



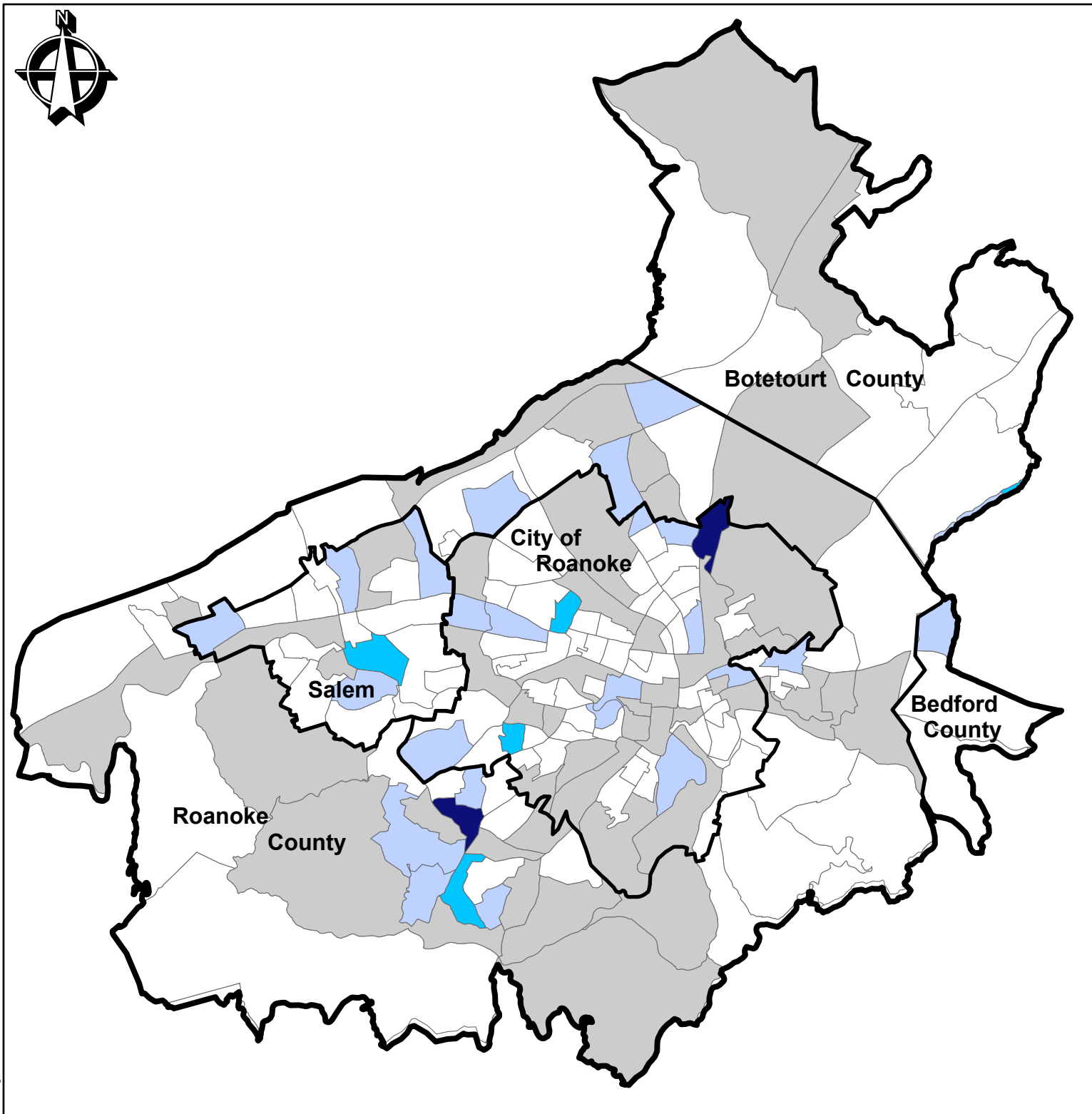
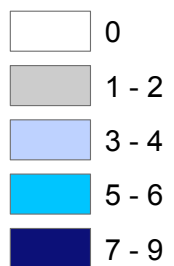
Demographic Profile

Map 2
Percent Asian
By Block Group
Within MPO
2025 Study Area



Legend

Percent Asian

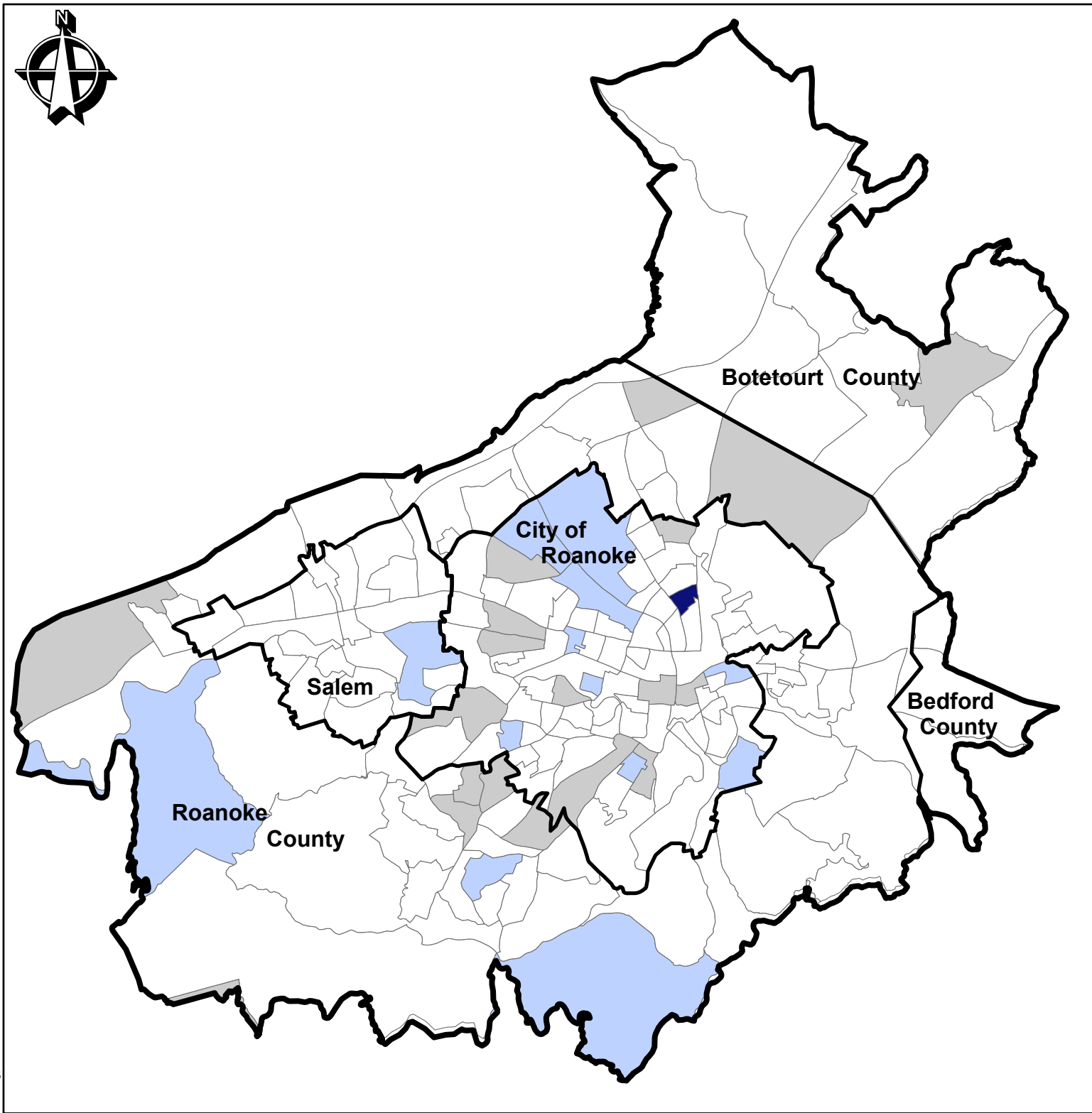
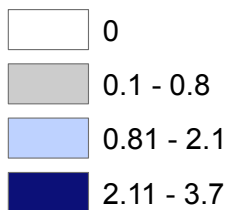


Demographic Profile



Map 3
Percent American Indian and Alaska Native
By Block Group
Within MPO
2025 Study Area

Percent American Indian and Alaska Native

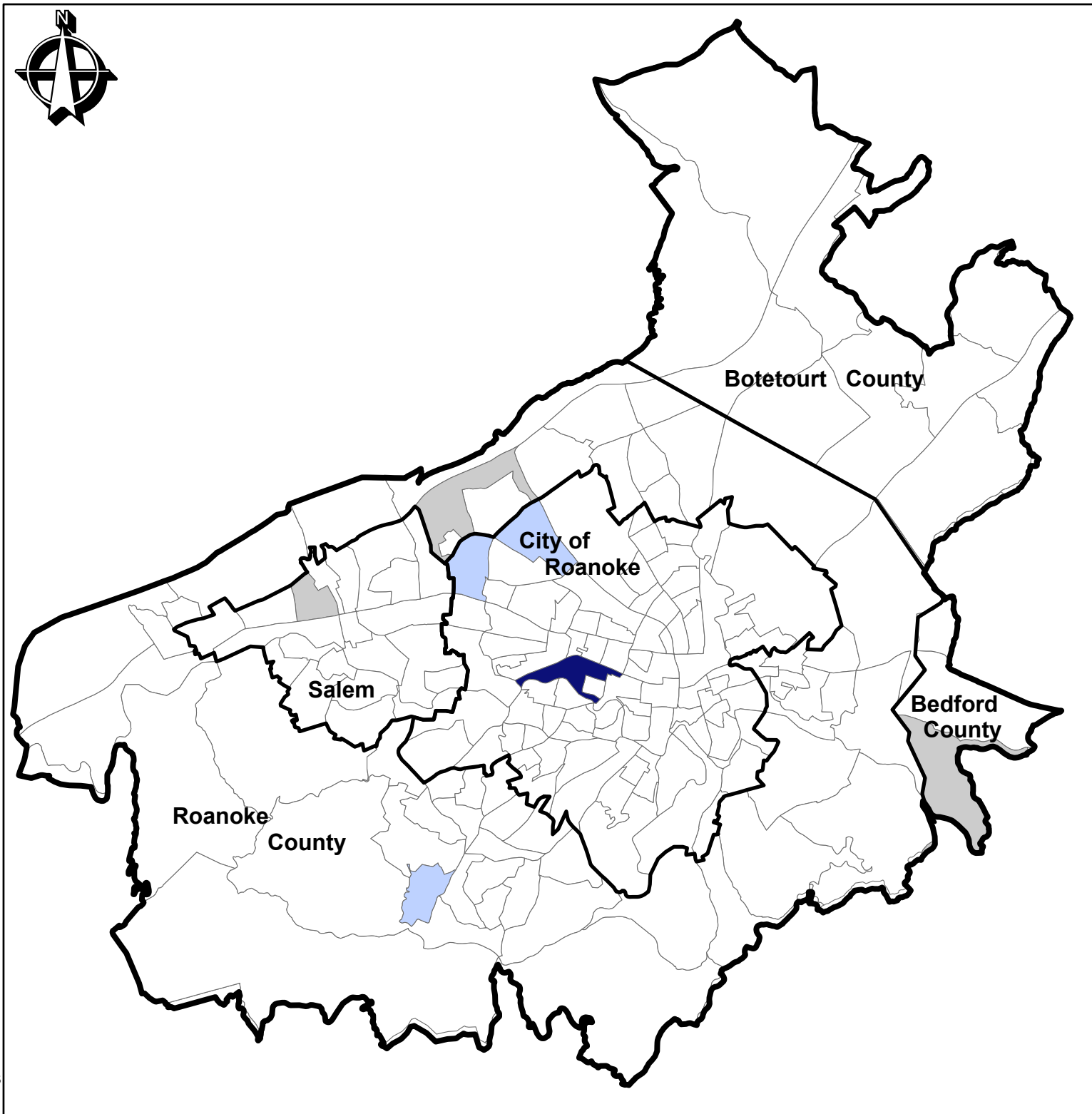
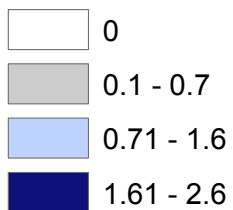


Demographic Profile



Map 4
Percent Native Hawaiian
and Other Pacific
Islander
By Block Group
Within MPO
2025 Study Area

Percent Native Hawaiian
and Other Pacific Islander



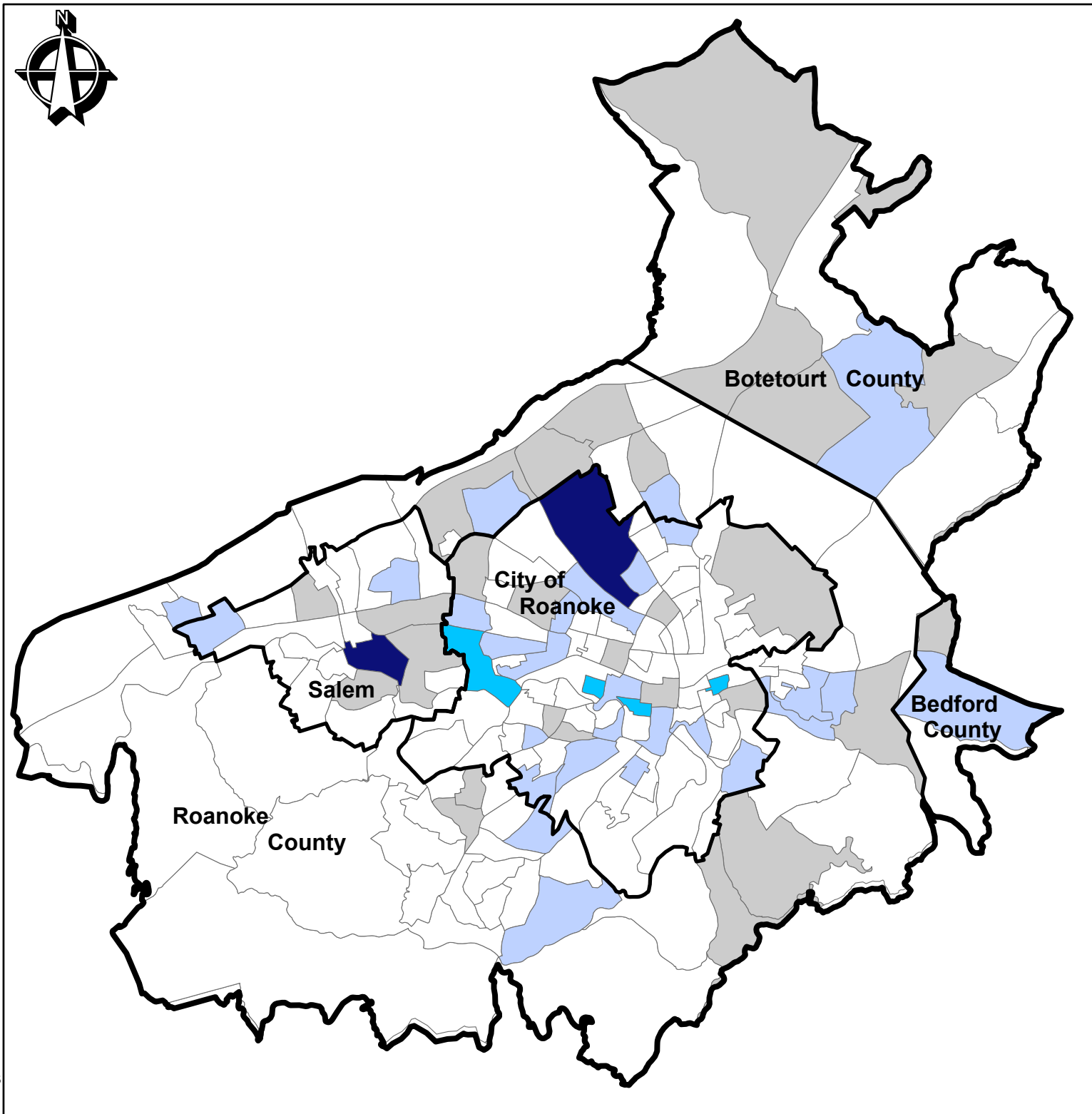
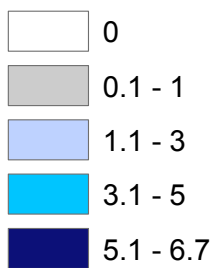
Demographic Profile



Map 5
Percent 'Some Other Race'
By Block Group
Within MPO
2025 Study Area

Legend

Percent 'Some Other Race'



Demographic Profile



Map 6
Percent 'Two Or
More Races'
By Block Group
Within MPO
2025 Study Area

Legend

Percent 'Two Or More Races'

