

# **ROANOKE VALLEY- ALLEGHANY REGIONAL COMMISSION**



## **FY 2007 Comprehensive Work Program**

Adopted April 27, 2006

**Roanoke Valley-Alleghany Regional Commission**  
**FY 2007 Comprehensive Work Program**

Table of Contents

	<u>Page</u>
Overview .....	1
Acronym Descriptions .....	2
Service Area .....	3
Urban Transportation Projects .....	4
Rural Transportation Projects .....	10
Ride Sharing /Alternative Transportation Projects.....	13
Economic Development Projects .....	14
Environmental Projects .....	17
Community Development Projects .....	20
Regional Support Activities .....	22

Executive Director

Wayne G. Strickland

Administrative Staff

Olivia Dooley, Director of Finance  
 Jackie L. Pace, Office Manager

Planning Staff

Jake Gilmer, AICP, Regional Planner III  
 John Hull, Economic Resources Planner  
 Mark McCaskill, AICP, Senior Planner  
 Matt Miller, Director of Information Services  
 Shane Sawyer, Regional Planner II  
 Eddie Wells, AICP, Senior Planner  
 Transportation Alternatives Coordinator

## OVERVIEW

The Annual Comprehensive Work Program is the basis for achieving the objectives and strategies as outlined in the Roanoke Valley-Alleghany Regional Commission's Strategic Plan. The Commission strives to maximize its limited staff and resources by developing a comprehensive work plan based on current needs and priorities of our region.

This work program is a compilation of projects presented by local elected officials, Commission members, the Roanoke Valley Area Metropolitan Planning Organization (RVAMPO) members, regional economic development-related organizations and staff. The Commission and RVAMPO reviews and ranks projects according to importance to the region. Projects are selected by balancing importance of the project to the region, funding availability, staff time and other constraints to arrive at the projects. The intent is to obtain the most benefit from the least direct cost to the local governments. Requests not included in this year's work program are added to a list of potential projects for future work programs. These potential projects may be included in next year's work program if the need still exists and funding is available.

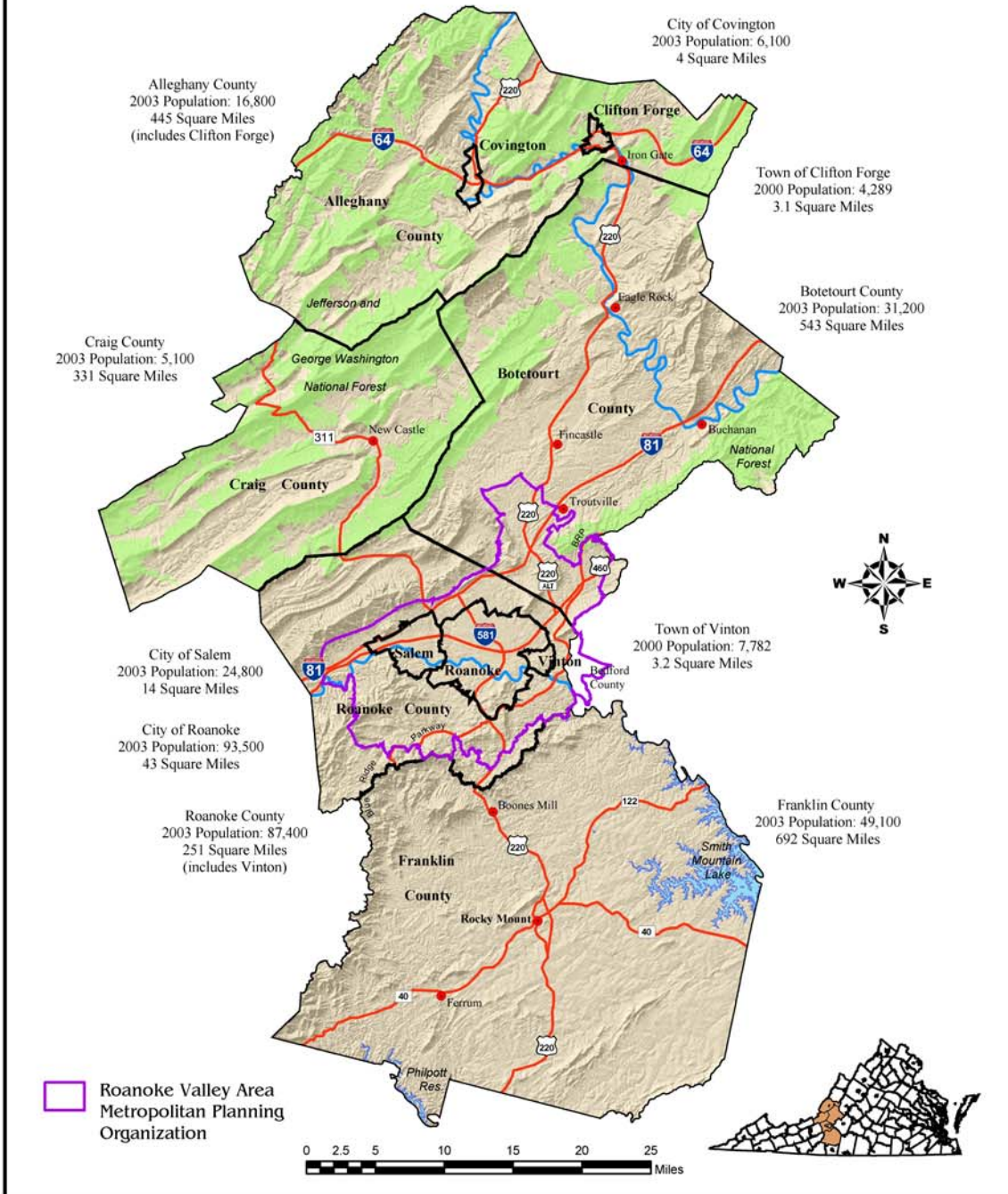
The work program is revised annually and may be amended as deemed necessary by the member governments that we serve.

## ACRONYM DESCRIPTIONS

ARC	Appalachian Regional Commission
BCI	Bicycle Compatibility Index
CDBG	Community Development Block Grant
CTST	Community Traffic Safety Team
DEQ	Department of Environmental Quality
EAC	Early Action Compact
EAP	Early Action Plan
EMS	Emergency Medical Services
EPA	Environmental Protection Agency
FTA	Federal Transit Administration
GIS	Geographic Information System
GPS	Global Positioning System
GRTC	Greater Roanoke Transit Company
IFLOWS	Integrated Flood Observing and Warning System
IMPLAN	Impact Planning Software
ITE	Institute of Transportation Engineers
ITS	Intelligent Transportation System
LOCI	Local Fiscal Impact Analysis
MSA	Metropolitan Statistical Area
NEPA	National Environmental Protection Act
NOAA	National Oceanic and Atmospheric Administration
NPDES	National Pollutant Discharge Elimination System
NWS	National Weather Service
PL	Planning funds ( <i>Virginia Department of Transportation</i> )
RADAR	Roanoke Area Dial a Ride
RFP	Request for Proposal
RVARC	Roanoke Valley-Alleghany Regional Commission (Cities of Covington, Roanoke and Salem, Counties of Alleghany, Botetourt, Craig, Franklin and Roanoke and Towns of Clifton Forge and Vinton)
RVAMPO	Roanoke Valley Area Metropolitan Planning Organization (Cities of Roanoke and Salem, Counties of Bedford, Botetourt and Roanoke, Town of Vinton)
SPR	State Planning Research funds ( <i>Virginia Department of Trans</i> )
TAZ	Transportation Analysis Zone
TDM	Transportation Demand Management
TE	Transportation Enhancement
TIP	Transportation Improvement Program
TMDL	Total Maximum Daily Load
VAPDC	Virginia Association of Planning District Commissions
VDEM	Virginia Department of Emergency Management
VDEQ	Virginia Department of Environmental Quality
VDOT	Virginia Department of Transportation



# Roanoke Valley-Alleghany Region



# URBAN TRANSPORTATION PROJECTS

## **Long-Range Transportation Planning**

The primary tasks of the FY2007 long-range planning project are acquiring the 4-step model software, train staff on its use, perform basic model runs, acquire corridor simulation software, train staff on its use, evaluate management and operations issues in the long-range planning process, finalize TAZ update process, review scenario planning and conduct the annual Official Public Meeting.

*Localities served:* Cities of Roanoke and Salem, Counties of Bedford, Botetourt and Roanoke, Town of Vinton

*Project Leader:* Mark McCaskill

*Funding Source & Estimated Hours:* PL – 1,001 hrs., FTA – 194 hrs.

## **Transportation Improvement Program**

As required by federal planning regulations, the Transportation Improvement Plan (TIP) for the Roanoke Valley area is a four-year program of highway, transit, bicycle, pedestrian, safety and transportation enhancement projects receiving federal funds. The TIP is updated every year and must be approved by the RVAMPO's policy board and the Governor of Virginia. Some major activities that will be undertaken include amending the current TIP as needed, preparation of the RVAMPO Self-Certification Statement and activities to assure that the Statement is being followed, evaluation of TEALUS 4.0 software, development of the 2007-10 TIP that complies with SAFETEA-LU provisions.

*Localities served:* Cities of Roanoke and Salem, Counties of Bedford, Botetourt and Roanoke, Town of Vinton

*Project Leader:* Regional Planner III

*Funding Source & Estimated Hours:* PL - 550 hrs., FTA -122 hrs.

## **Public Participation–Environmental Justice**

Continue to find ways to incorporate Environmental Justice concerns in the long range planning process using demographic data and detailed evaluation methodologies. Update the Public Participation Process for the Long Range Transportation Plan update to comply with SAFETEA-LU provisions, complete a benefits and burdens framework, conduct focus groups and begin using the computerized kiosk. Plan seminars and special events aimed at education and outreach.

*Localities served:* Cities of Roanoke and Salem, Counties of Bedford, Botetourt and Roanoke, Town of Vinton

*Project Leader:* Transportation Alternatives Coordinator

*Funding Source & Estimated Hours:* PL - 434 hrs., FTA -135 hrs.

### **Ozone Early Action Plan Coordination**

Coordination of transportation strategies to support the adopted Early Action Plan (EAP) as it applies to the RVAMPO's service area. The summer of 2005 was the first ozone season that comprises a "three year rolling average" which will determine our compliance with the federal 8-hour ozone standard in 2007. Staff will be responsible for communication of the Ozone Alert messaging and educational outreach and providing bi-annual reports to DEQ.

*Localities served:* Cities of Roanoke and Salem, Counties of Botetourt and Roanoke, Town of Vinton

*Project Leader:* Transportation Alternatives Coordinator

*Funding Source & Estimated Hours:* PL – 300 hrs., FTA – 65 hrs.

### **Operations Management and Planning**

Coordination of operations management and ITS using VDOT's newly constructed "Smart Travel Center". Information will be used in the next Long-Range Transportation Update.

*Localities served:* Cities of Roanoke and Salem, Counties of Bedford, Botetourt and Roanoke, Town of Vinton

*Project Leader:* Regional Planner III

*Funding Source & Estimated Hours:* PL – 150 hrs., FTA – 50 hrs.

### **MPO Bylaws Review and Update**

The 3C process requires a properly functioning MPO Policy Board. The purpose of this element is to comprehensively review the current RVAMPO bylaws and compare them with bylaws from similarly sized MPOs around the country. The resulting recommended bylaws will touch on all elements of the policy board including meeting schedule, officers, tenure, committees, use of technology in voting etc.

*Project Leader:* Transportation Alternatives Coordinator

*Funding Source & Estimated Hours:* PL – 150 hrs.

### **Bikeway Plan Coordination**

Staff will partner with local government planning and public works departments and VDOT to facilitate bicycle accommodation implementation. Staff will also work with local government stakeholders to review and consider amendments to the bicycle plan on an annual basis.

*Localities served:* Cities of Roanoke and Salem, Counties of Bedford, Botetourt and Roanoke, Town of Vinton

*Project Leader:* Shane Sawyer

*Funding Source & Estimated Hours:* PL – 299 hrs.

### **Preparation for Valley Metro Ridership Survey**

Staff will research current regulations and methods for conducting the required ridership survey for the Greater Roanoke Transit Company. Staff will then develop a survey instrument, test survey instrument and develop an execution plan for survey that will be conducted in 2008.

*Localities served:* Cities of Roanoke and Salem, Town of Vinton

*Project Leader:* Transportation Alternatives Coordinator

*Funding Source & Estimated Hours:* FTA – 139 hrs.

### **Emergency Evacuation Plan (Transportation Security)**

Staff will coordinate with traffic officials, law enforcement, emergency responders, local officials, hospital officials and others to develop an evacuation plan that focuses on designating appropriate transportation routes and policies that facilitate safe and orderly evacuation.

*Localities served:* Cities of Roanoke and Salem, Counties of Bedford, Botetourt and Roanoke, Town of Vinton

*Project Leader:* Regional Planner III

*Funding Source & Estimated Hours:* PL - 228 hrs., FTA – 25 hrs.

### **Freight Strategies Implementation**

The continuing activities of this task will focus on two specific elements: integrating freight into the long-range planning process and the continued support of the freight advisory committee. Staff will work with local government planners to advance the concept of freight villages and/or warehousing and logistics zoning in local comprehensive and other plans. Staff will continue to work with private sector representatives and chambers of commerce to support the recently established “Freight Advisory Committee.”

*Localities served:* Cities of Roanoke and Salem, Counties of Bedford, Botetourt and Roanoke, Town of Vinton

*Project Leader:* Mark McCaskill

*Funding Source & Estimated Hours:* PL – 100 hrs.

### **Safety Planning Phase II**

Staff will attend the Blue Ridge Transportation Safety Board meetings for coordination of common transportation safety related issues. Staff will conduct specific transportation safety related studies and investigate the application of the “Safe Routes to School Program”.

*Localities served:* Cities of Roanoke and Salem, Counties of Bedford, Botetourt and Roanoke, Town of Vinton

*Project Leader:* Regional Planner III

*Funding Source & Estimated Hours:* PL – 268 hrs., FTA – 10 hrs.



### **General Technical Assistance & Technical Support Activities**

RVARC staff will research, develop, maintain, and analyze data for use in a variety of technical support and planning support activities. Work activities will be organized around the following:

**Technical Support Activities** - travel time studies, turning movement counts and other technical support activities as requested.

**Transportation Enhancement Assistance** – as requested by local governments

**General Technical Assistance** – as requested by local governments

*Localities served:* Cities of Roanoke and Salem, Counties of Bedford, Botetourt and Roanoke, Town of Vinton

*Project Leader:* Staff

*Funding Source & Estimated Hours:* PL – 338 hrs., FTA 75 hrs.

### **Transportation and Land Use Connection**

Using parcel data, staff will highlight development and growth in 10-year increments by examining the years buildings were constructed in the Roanoke Valley. Aerial photography from 1970 to 2001 will be used to provide visual examples of high growth areas. Aerial photography will be used to identify new terrain road construction. The analysis will seek to identify the impact of road construction upon land use. Staff will also begin to compile land use 'snapshots' by saving and filing copies of parcel data at 5 year increments for comparison to data to be released later. Census data aggregated for Cities of Roanoke and Salem, the Counties of Bedford, Botetourt, and the Town of Vinton will be compiled to show population growth for comparison to the parcel data. Staff will relate the transportation/land use pattern to existing plans and evaluate future impacts of patterns.

*Localities served:* Cities of Roanoke and Salem, Counties of Bedford, Botetourt and Roanoke, Town of Vinton

*Project Leader:* John Hull

*Funding Source & Estimated Hours:* PL – 650 hrs.

### **Regional Greenway Plan Update Phase II**

Additional hours needed to complete Regional Greenway Master Plan Update begun in FY 2006. This project updates and expands upon the *Roanoke Valley Conceptual Greenway Plan* completed in 1995 by the Fifth Planning District Commission, Roanoke City, Roanoke County, Salem, and the Town of Vinton. Since the completion of the last plan, there have been many changes regarding greenway facilities, local, regional, and neighborhood plan updates.

*Localities served:* Cities of Roanoke and Salem, Counties of Bedford, Botetourt and Roanoke, Town of Vinton

*Project Leader:* Shane Sawyer

*Funding Source & Estimated Hours:* PL – 350 hrs.

### **Transit Route Maps**

Staff will update transit maps as requested by the Greater Roanoke Transit Company or RADAR.

*Localities served:* City of Roanoke, City of Salem, County of Roanoke, Town of Vinton

*Project Leader:* Matt Miller

*Funding Source & Estimated Hours:* FTA – 100 hrs.

### **Greater Roanoke Transit Company Financial Capacity Analysis**

Staff will update the analysis of financial strengths and weaknesses and depict GRTC's future financial needs.

*Localities served:* City of Roanoke

*Project Leader:* Olivia Dooley

*Funding Source & Estimated Hours:* FTA – 100 hrs.

### **I-81 NEPA Process MPO Report**

I-81 in Virginia is currently under a tiered NEPA process. A Tier 1 report was recently published; however a Tier 2 report is required for the I-81 corridor within the RVAMPO Study Area Boundary. Staff will compile a report of issues that the RVAMPO feels should be incorporated into the Tier 2 document. The RVAMPO will publish the report and submit it as official RVAMPO feedback for the NEPA process on I-81.

*Localities served:* Cities of Roanoke and Salem, Counties of Bedford, Botetourt and Roanoke, Town of Vinton

*Project Leader:* Mark McCaskill

*Funding Source & Estimated Hours:* PL – 130 hrs.

### **Neighborhood Transportation Corridors**

As regional thoroughfares, such as routes 460 and 419 become more congested, motorists are increasingly traveling through neighborhoods to a destination. This element will identify neighborhood street systems, near regionally significant thoroughfares, that have the potential to become a cut through for pass through traffic. Staff will then recommend traffic calming measures that can be applied to the selected routes for multiple future use scenarios chosen by the MPO.

*Localities served:* Cities of Roanoke and Salem, Counties of Bedford, Botetourt and Roanoke, Town of Vinton

*Project Leader:* Shane Sawyer

*Funding Source & Estimated Hours:* PL – 120 hrs.

### **Trolley Impact Study**

An urban trolley (downtown to future biomedical center) feasibility study was completed by a consultant in 2004. This project would follow-up on that study with an in-depth review of new trolley starts since the previous study was completed. The final report will address such concepts as ridership predictions, economic impact prediction, effect on property values along trolley line, funding mechanisms used.

*Localities served:* City of Roanoke

*Project Leader:* Transportation Alternatives Coordinator

*Funding Source & Estimated Hours:* FTA – 170 hrs.

## **RURAL TRANSPORTATION PROJECTS**

### **Rural Long Range Transportation Plan Phase I**

Staff will start to create a regional long-range plan in the rural portion of the Roanoke Valley-Alleghany Regional Commission (RVARC) to complement the long-range transportation plan developed by the Roanoke Valley Area Metropolitan Planning Organization (RVAMPO) for the metropolitan area. This project consists of four phases across a multi-year effort that will result in a “safety conscious, GIS based long-range multimodal plan” (highways, bicycle/pedestrian, freight, aviation and transit) for the RVARC. The four phases are: Phase I – Goals and Data Collection (FY 2007); Phase 2 – Analysis and Problem Identification (FY 2008); Phase 3 - Public Outreach and Recommendation Development (FY 2009); and Phase 4 - Public Endorsement and Regional Adoption (FY 2010).

*Localities served:* City of Covington, Counties of Alleghany, Botetourt, Craig and Roanoke, Town of Clifton Forge

*Project Leader:* Mark McCaskill

*Funding Source & Estimated Hours:* SPR - 400 hrs.

### **Rural Safety Planning Phase II**

Staff will update and expand the Rural Flood Prone Roadway Study that was completed in 1999 to include the urban area. In cooperation with VDOT, VDEM, the National Weather Service and local governments, staff will inventory road segments that are prone to any type of flooding event.

*Localities served:* City of Covington, Counties of Alleghany, Botetourt, Craig and Roanoke, Town of Clifton Forge

*Project Leader:* Regional Planner III

*Funding Source & Estimated Hours:* SPR – 240 hrs.

### **Ozone Early Action Plan Coordination**

In December 2002 officials from the counties of Botetourt and Roanoke, the town of Vinton, and the cities of Roanoke and Salem entered into an Ozone Early Action Compact (EAC) with the Virginia Department of Environmental Quality (DEQ) and the federal EPA. In March 2004 regional governments adopted the Ozone Early Action Plan (EAP), which resulted from the EAC process. This project involves the implementation of transportation strategies to support the adopted Early Action Plan (EAP) as it applies to the rural portion of the EAP service area. Staff will develop and maintain air quality communication to participating businesses, agencies and the general public.

*Localities served:* City of Covington, Counties of Alleghany, Botetourt, Craig and Roanoke, Town of Clifton Forge

*Project Leader:* Transportation Alternatives Coordinator

*Funding Source & Estimated Hours:* SPR – 50 hrs.

### **Rural Transportation Technical Support Activities**

RVARC staff will research, develop, maintain, and analyze data for use in a variety of technical support and planning support activities. Work activities will be organized around the following:

**General Technical Assistance** – Provision of assistance to local governments, planners and citizens as requested.

**Technical Support Activities** – a variety of planning support activities to support work program projects and/or the general planning process (i.e. turning movement counts).

**Regional Greenways Mapping Assistance** – GPS and mapping assistance to the Regional Greenway Commission as needed.

**Transportation Enhancement Assistance** – Provision of assistance to local governments as requested.

**VDOT Transportation Pilot Grant – “Roanoke Valley/ New River Valley Mobility Study” Assistance** – In kind staff assistance consisting primarily of meeting attendance and basic research to support regional study performed by Virginia Tech Transportation Institute.

*Localities served:* City of Covington, Counties of Alleghany, Botetourt, Craig and Roanoke, Town of Clifton Forge

*Project Leader:* Regional Planner III

*Funding Source & Estimated Hours:* SPR- 302 hrs

### **Alleghany County Comprehensive Plan Update**

RVARC staff will write the transportation element of Alleghany County’s comprehensive plan update.

*Localities served:* County of Alleghany

*Project Leader:* Eddie Wells

*Funding Source & Estimated Hours:* SPR- 40 hrs

### **Rural Bicycle Plan Implementation**

Staff will partner with local government planning and public works departments to facilitate bicycle accommodation implementation. This will entail additional analysis using the BCI model and possibly entail additional fieldwork. Staff will work with local government stakeholders to review and consider amendments to the bicycle plan on an annual basis. This will allow for the incorporation of new accommodations that result from comprehensive plan updates, private development or other changes in circumstance that were unforeseen at plan adoption.

*Localities served:* City of Covington, Counties of Alleghany, Botetourt, Craig and Roanoke, Town of Clifton Forge

*Project Leader:* Shane Sawyer

*Funding Source & Estimated Hours:* SPR- 50 hrs

### **Transportation and Land Use Connection**

Staff will address the transportation/land use question using a 3- step process. The purpose of this process is to 1) Uncover historic transportation/ land use patterns using parcel data and aerial photography; 2) Relate these transportation/land use patterns to local comprehensive plans and the long-range plan; and 3) Evaluate the future impact of these patterns by using ITE trip generation estimates at specific sites of regional significance and by supplementing ITE estimates with actual field observations by staff.

*Localities served:* Counties of Botetourt and Roanoke

*Project Leader:* John Hull

*Funding Source & Estimated Hours:* SPR- 107 hrs

## **Ridesharing/Alternative Transportation Projects**

### **Ridesharing/Alternative Transportation Projects**

Continue to operate the region's RIDE Solutions Program. Continue to seek opportunities to create a greater public awareness of commuting options. Work with individual citizens, employers, and local governments to promote alternative transportation. Work with large employers to encourage their employees to use alternative modes of transportation, such as car-pooling, bus, telecommuting, and vanpooling. Work with employers to offer alternative transportation benefits to employees. Use employers as communication channels to educate employees about ridesharing and its benefits. Manage the Ride Solutions database, web pages, member's needs, grant writing, bookkeeping, advertising, public outreach, and information requests. Ride Solutions also provides survey and statistical analysis for the region's public transportation and park-and-ride systems.

*Localities served:* Cities of Covington, Roanoke and Salem, Counties of Alleghany, Botetourt, Craig, Floyd, Franklin, Montgomery and Roanoke, Towns of Clifton Forge and Vinton

*Project Leader:* Transportation Alternatives Coordinator

*Funding Source & Estimated Hours:* Rideshare – 898 hrs.

## **ECONOMIC DEVELOPMENT PROJECTS**

### **Alleghany Highlands Enterprise Zone Mapping**

Commission staff will update the existing Alleghany Highlands Enterprise Zone map to be more accurate and parcel based. Staff will use available digital parcel mapping from Covington and Alleghany County to make an updated map.

*Localities served:* City of Covington, County of Alleghany, Towns of Clifton Forge and Iron Gate,

*Project Leader:* Matt Miller

*Funding Source & Estimated Hours:* ARC – 150

### **Botetourt County Tourism Strategy**

Staff will assist Botetourt County with the development of a Tourism Strategic Plan which addresses the needs for developing / enhancing the tourism industry. The plan will identify objectives and specific strategies for marketing Botetourt County as a tourism destination.

*Localities served:* County of Botetourt

*Project Leader:* Eddie Wells

*Funding Source & Estimated Hours:* ARC – 100

### **Redevelopment Opportunities**

Staff will assist the City of Roanoke in development of grant applications to address the inventory and redevelopment of brownfield sites.

*Localities served:* City of Roanoke

*Project Leader:* Eddie Wells

*Funding Source & Estimated Hours:* RVARC – 50 hrs.

### **Data Mapping & Census 2000 Rankings**

Using Census 2000 data at the city and county level for the entire United States, staff will produce a publication that ranks Commission counties and cities against the 3,141 counties and cities in the United States on 45 different indicators including population, income, age, race, native language, education, and housing data. Staff will provide on-going data and mapping assistance to the region's economic development offices. Staff will also attend regional economic development meetings when possible

*Localities served:* Cities of Covington, Roanoke and Salem, Counties of Alleghany, Botetourt, Craig, Franklin and Roanoke, Towns of Clifton Forge and Vinton

*Project Leader:* John Hull

*Funding Source & Estimated Hours:* RVARC – 80 hrs.



### **Cluster Targeting Analysis**

RVARC staff will pursue a more in-depth analysis of industry clusters in the Roanoke MSA, building off of data and analysis from the FY2004 Industry Cluster Analysis for the NewVA region of Virginia. Data from the original regional cluster study will be disaggregated into locality-specific tables. Furthermore, working with a small committee of economic development professionals and staff from local governments, RVARC staff will examine cluster wages, suppliers, skill needs, work environments, space needs, infrastructure requirements, and other factors to determine which clusters are “best suited” for urban and suburban portions of the study region. This analysis will also look at geographic concentrations of clusters currently present in the region.

*Localities served:* City of Roanoke

*Project Leader:* John Hull

*Funding Source & Estimated Hours:* RVARC – 400 hrs.

### **Technology Master Plan for Alleghany County**

The Alleghany County Highlands recently completed a Telecommunications Plan that focused on broadband internet access. Commission staff would work with the county to develop an RFP to hire a consultant to complete a more detailed study and implementation plan for Alleghany County. Commission staff would also work with other localities in the region to encourage a regional approach to the plan.

*Localities served:* County of Alleghany

*Project Leader:* Matt Miller

*Funding Source & Estimated Hours:* ARC – 50 hrs.

### **GRANT System**

Staff will compile an email distribution list of local government staff and other interested parties from the region and electronically distribute notices of relevant grant opportunities from federal and state agencies as well as private foundations.

*Localities served:* Cities of Covington, Roanoke and Salem, Counties of Alleghany, Botetourt, Craig, Franklin and Roanoke and Towns of Clifton Forge and Vinton

*Project Leader:* Shane Sawyer

*Funding Source & Estimated Hours:* RVARC – 130 hrs.

## **IMPLAN**

Staff will acquire the IMPLAN Economic Impact Modeling software and necessary data to establish and run a regional economic impact model. Staff will also acquire training necessary to run the model.

*Localities served:* Cities of Covington, Roanoke and Salem, Counties of Alleghany, Botetourt, Craig, Franklin and Roanoke and Towns of Clifton Forge and Vinton

*Project Leader:* John Hull

*Funding Source & Estimated Hours:* RVARC – 40 hrs.

## **LOCI**

Staff will acquire LOCI economic and fiscal impact modeling software and set up profiles for each community within the Roanoke Valley – Alleghany Regional Commission for use in determining the fiscal impacts of new housing developments, new commercial developments, and new industrial uses.

*Localities served:* Cities of Covington, Roanoke and Salem, Counties of Alleghany, Botetourt, Craig, Franklin and Roanoke and Towns of Clifton Forge and Vinton

*Project Leader:* John Hull

*Funding Source & Estimated Hours:* RVARC – 50 hrs.

## **Grant Writing and Research**

The Commission will continue to provide assistance to localities in writing grant applications and researching funding opportunities for regional and local development projects. Project includes attendance at grant workshops.

*Localities served:* Cities of Covington, Roanoke and Salem, Counties of Alleghany, Botetourt, Craig, Franklin and Roanoke and Towns of Clifton Forge and Vinton

*Project Leader:* Eddie Wells

*Funding Source & Estimated Hours:* ARC – 30 hrs., RVARC – 47 hrs.

## **General Technical Assistance**

RVARC staff will research, develop, maintain, and analyze data for use in a variety of technical support and planning support activities.

*Localities served:* Cities of Covington, Roanoke and Salem, Counties of Alleghany, Botetourt, Craig, Franklin and Roanoke and Towns of Clifton Forge and Vinton

*Project Leader:* Matt Miller

*Funding Source & Estimated Hours:* ARC 33 hrs., RVARC – 67 hrs.

## ENVIRONMENTAL PROJECTS

### **Pigg River Dam Removal**

The Staff will provide project management assistance to Franklin County for the Pigg River Dam Removal project. The project will initiate river restoration in the greater Roanoke watershed by removing a dam on the Pigg River, near the town of Rocky Mount. Removal of the dam will provide the opportunity to spotlight and publicize the Virginia Rural Area Conservation & Economic Restoration Initiative (RACER) partnership throughout the watershed. Dam removal on the Pigg River will be the first phase of a more comprehensive and strategic river restoration initiative to restore stream health and aquatic habitat in the greater Roanoke watershed.

*Localities served:* County of Franklin

*Project Leader:* Eddie Wells

*Funding Source & Estimated Hours:* RVARC – 150 hrs.

### **Integrated Flood Observing and Warning System (IFLOWS)**

Staff, in cooperation with VDEM, NOAA and local governments, will identify streams that need IFLOW gauges. NOAA Automated Flood Warning System utilizes gauges monitor rainfall in stream watersheds and sends an alert to local EMS offices when there is a chance of flooding. Additional gauges will improve early warning of flooding and cover areas that are not currently monitored. NOAA does have grant funding available to assist in purchasing gauges.

*Localities served:* Cities of Covington, Roanoke and Salem, Counties of Alleghany, Botetourt, Craig and Roanoke and Towns of Clifton Forge and Vinton

*Project Leader:* Eddie Wells

*Funding Source & Estimated Hours:* RVARC – 50 hrs.

### **Public Information and Educational Program**

The Commission will participate in VDEM/FEMA ad campaigns to increase the level of knowledge and awareness of natural hazards.

*Localities served:* Cities of Covington, Roanoke and Salem, Counties of Alleghany, Botetourt, Craig and Roanoke and Towns of Clifton Forge and Vinton

*Project Leader:* Eddie Wells

*Funding Source & Estimated Hours:* RVARC – 50 hrs.

### **Storm Ready Program**

National Weather Service sponsored program to recognize localities that have taken steps to improve disaster communications such as reception of NWS information, weather monitoring, local warning dissemination, training, cooperation with NWS, to prepare for storm events. Provide localities with information about the Storm Ready program and assist interested jurisdictions with the application process.

*Localities served:* Cities of Covington, Roanoke and Salem, Counties of Alleghany, Botetourt, Craig and Roanoke and Towns of Clifton Forge and Vinton

*Project Leader:* Eddie Wells

*Funding Source & Estimated Hours:* RVARC – 50 hrs.

### **Total Maximum Daily Load Report for Jackson River and Tributaries**

Coordinate Total Maximum Daily Load analysis of stream segments of the Jackson River and its tributaries in cooperation with the Virginia Department of Environmental Quality.

*Localities served:* City of Covington, County of Alleghany, Towns of Clifton Forge and Iron Gate

*Project Leader:* Eddie Wells

*Funding Source & Estimated Hours:* DEQ – 40 hrs.

### **Regional Water Supply Planning Coordination**

Assist participating localities in applying for and coordinating a regional Water Supply Planning Grant from the Virginia Department of Environmental Quality to assist in development of a regional water supply plan that meets the criteria and conditions established in the Commonwealth's Local and Regional Water Supply Planning Regulation.

*Localities served:* Cities of Bedford, Roanoke and Salem, Counties of Bedford, Botetourt, Craig, Franklin and Roanoke, Towns of Boones Mill, Buchanan, Fincastle, Rocky Mount, Troutville and Vinton

*Project Leader:* Shane Sawyer

*Funding Source & Estimated Hours:* RVARC – 60 hrs.

### **Regional Water Issues**

Assist local, state, and federal agencies with water resources planning as requested. Water resources-related issues and activities in the region include storm water, water supply, wastewater, water quality/quantity, TMDL's, tributary strategies, or other issues that may arise.

*Localities served:* Cities of Roanoke and Salem, Counties of Alleghany, Botetourt, Franklin, Roanoke and Towns of Clifton Forge and Vinton

*Project Leader:* Shane Sawyer

*Funding Source & Estimated Hours:* RVARC – 60 hrs.

### **Grant Writing and Research**

The Commission will continue to provide assistance to localities in writing grant applications and researching funding opportunities for regional and local development projects. Project includes attendance at grant workshops.

*Localities served:* Cities of Covington, Roanoke and Salem, Counties of Alleghany, Botetourt, Craig, Franklin and Roanoke and Towns of Clifton Forge and Vinton

*Project Leader:* Eddie Wells

*Funding Source & Estimated Hours:* ARC - 33 hrs., RVARC – 47 hrs.

### **General Technical Assistance**

RVARC staff will research, develop, maintain, and analyze data for use in a variety of technical support and planning support activities.

*Localities served:* Cities of Covington, Roanoke and Salem, Counties of Alleghany, Botetourt, Craig, Franklin and Roanoke and Towns of Clifton Forge and Vinton

*Project Leader:* Eddie Wells

*Funding Source & Estimated Hours:* ARC – 33 hrs., RVARC – 17 hrs.

## COMMUNITY DEVELOPMENT PROJECTS

### **Update Alleghany County Comprehensive Plan**

Update the Alleghany County Comprehensive Plan to include recently released Census data and related demographics for the Town of Clifton Forge (town demographics need to be included following Clifton Forge reversion to town status).

*Localities served:* County of Alleghany

*Project Leader:* Eddie Wells

*Funding Source & Estimated Hours:* ARC - 200 hrs.

### **Land Use Regulations**

Assist Franklin County with updating their zoning and subdivision ordinances.

*Localities served:* County of Franklin

*Project Leader:* Eddie Wells

*Funding Source & Estimated Hours:* RVARC - 50 hrs.

### **Assistance to Alleghany County with GIS**

Commission GIS staff will attend County level meetings and assist in development of a GIS system. If necessary, staff will also assist in developing an RFP for a consultant generated implementation plan.

*Localities served:* County of Alleghany

*Project Leader:* Matt Miller

*Funding Source & Estimated Hours:* ARC - 50 hrs.

### **Town-Wide Housing Strategy for Clifton Forge**

Assist the Town of Clifton Forge in the development of a town-wide housing revitalization strategy. Activities will include examination of the entire town, neighborhood by neighborhood; to examine housing needs and prioritize neighborhoods for future grant applications, procurement of housing rehab specialist, development of funding strategy and grant writing.

*Localities served:* Town of Clifton Forge

*Project Leader:* Eddie Wells

*Funding Source & Estimated Hours:* ARC - 350 hrs.

### **Grant Writing and Research**

The Commission will continue to provide assistance to localities in writing grant applications and researching funding opportunities for regional and local development projects. Project includes attendance at grant workshops.

*Localities served:* Cities of Covington, Roanoke and Salem, Counties of Alleghany, Botetourt, Craig, Franklin and Roanoke and Towns of Clifton Forge and Vinton

*Project Leader:* Shane Sawyer

*Funding Source & Estimated Hours:* ARC - 34 hrs., RVARC – 46 hrs.

### **General Technical Assistance**

RVARC staff will research, develop, maintain, and analyze data for use in a variety of technical support and planning support activities.

*Localities served:* Cities of Covington, Roanoke and Salem, Counties of Alleghany, Botetourt, Craig, Franklin and Roanoke and Towns of Clifton Forge and Vinton

*Project Leader:* Matt Miller

*Funding Source & Estimated Hours:* ARC - 34 hrs., RVARC – 16 hrs.

## **REGIONAL SUPPORT ACTIVITIES**

### **Regional Leadership Collaboration**

Coordinate and facilitate regular meetings of city/town Mayors and Chairmen of the Boards of Supervisors as well as chief administrative officials in the region. Arrange and facilitate Regional Summit meetings among local elected officials and local government administrators as such needed.

*Project Leader:* Wayne Strickland

*Funding Source & Estimated Hours:* RVARC – 220 hrs., ARC – 40 hrs.

### **Public Facilitation and Strategic Planning Assistance**

Assist Roanoke's non-profits to develop strategic plans and milestones through public facilitation and discussion. Staff will meet with each of the agencies to work with them in determining their primary objectives, mission, vision, and goals. From these meetings staff will furnish the non-profit with a report outlining their strategic objectives.

*Project Leader:* Transportation Alternatives Coordinator

*Funding Source & Estimated Hours:* RVARC – 40 hrs.

### **Public Relations and Outreach**

Continue with publication of brochures, newsletters, website update, and continue outreach activities, including a speakers bureau.

*Project Leader:* Jackie Pace

*Funding Source & Estimated Hours:* RVARC – 50 hrs.

### **Regional Intern Program**

Manage the Commission's internship program. Additionally, begin formulating formal procedures and policies regarding application to the program, attendance, and supervision.

*Project Leader:* Shane Sawyer

*Funding Source & Estimated Hours:* RVARC - 20 hrs.



### **Regional Planning Academy**

Continue support of the Regional Citizens Planning Academy. The Academy offers specialized courses to citizens on all aspects of planning and development with a special emphasis on regionalism and specific activities and projects in which the Regional Commission is involved.

*Project Leader:* Shane Sawyer

*Funding Source & Estimated Hours:* RVARC – 40 hrs.

### **Pursue Stronger Ties with Contiguous PDCs**

Staff will develop ongoing relationships with other PDCs to encourage cooperation and communication between planning staffs.

*Project Leader:* Matt Miller

*Funding Source & Estimated Hours:* RVARC – 20 hrs.

### **Pursue Stronger Ties with Higher Learning**

Establish a process to strengthen linkages with all institutions of higher education in the area. Staff will continue to work with local colleges and universities to enhance ties through communication, project collaboration and internship programs.

*Project Leader:* Matt Miller

*Funding Source & Estimated Hours:* RVARC – 20 hrs.

### **Regional Planning Library**

Continue to maintain and improve library organization and operation to increase its usefulness to Commission members, businesses, and citizens in the region.

*Project Leader:* Shane Sawyer

*Funding Source & Estimated Hours:* RVARC - 60 hrs.

### **Statewide GIS Conference**

Staff will organize and host the 2006 Virginia GIS Conference for the Virginia Association of Planning District Commissions. The conference will be held October 22-23, 2006 at the Hotel Roanoke and Conference Center.

*Project Leader:* Matt Miller

*Funding Source & Estimated Hours:* VAPDC - 400 hrs.

**State Data Center**

Continue role as regional clearinghouse for demographic and economic development information and related data.

*Project Leader:* Matt Miller

*Funding Source & Estimated Hours:* RVARC - 150 hrs., ARC - 200 hrs.