

SECTION 4: CORRIDORS FOR CONSIDERATION OF BICYCLE ACCOMMODATION

Section 4 provides an overview of the Priority Lists and Vision Lists of corridors for consideration of bicycle accommodations for each locality within the RVAMPO study area. This section also references other state, regional, and local plans and policies relevant to the planning and provision of bicycle accommodations in the study area (see also Section 2).

While Priority and Vision lists of corridors have been developed, the *Bikeway Plan* generally endorses consideration of efforts to better accommodate cyclists on all corridors in the MPO study area, regardless of inclusion on the *Bikeway Plan* Priority and/or Vision lists, and installation of appropriate accommodation(s), where practicable, through a range of approaches (Sections 2 and 3). Moreover, specific accommodations are not recommended for Priority or Vision lists corridors. Instead, appropriate bicycle accommodation(s) should be considered and installed based on location-specific characteristics (i.e., context sensitive design), geometric and operational design parameters, and other considerations.

As previously noted the *Bikeway Plan* for the RVAMPO should be used in conjunction with other state, regional, and local plans, policies, and practices to better accommodate cyclists within the regional transportation network. Examples include but are not limited to the following documents:

- RVAMPO Transportation Improvement Plan
- City of Roanoke Complete Streets Policy

- City of Roanoke Street Design Guideline
- Annual Paving Schedules (local governments)
- CTB Policy for Integrating Bicycle and Pedestrian Accommodations
- VDOT State Bicycle Policy Plan
- VDOT annual paving schedule
- VDOT Maintenance and Construction Policy (VDOT has set goal of spending a minimum of 2 percent of a district’s asset number 400 and associated paving activities budget on paved shoulders)

4.1 RVAMPO Transportation Improvement Plan (2012-2015)

The Transportation Improvement Program (TIP) is a 4-year financial program that describes the schedule for obligating federal funds to state and local projects. The TIP contains federal funding information for all modes of transportation including highways, transit and pedestrian facilities. Additionally, the TIP also reflects projects and priorities identified in the RVAMPO Long Range Transportation Plan. The RVAMPO works closely with the Virginia Departments of Transportation (VDOT) and Rail & Public Transportation (VDRPT), as well as local transit operators (Valley Metro, RADAR), to update and amend the TIP each year as funding conditions change.

Projects listed in the RVAMPO TIP include spot improvements (bridges, intersections, crosswalks, etc.) as well as corridors improvements along portions of a roadway (widening, construction, etc). Projects from the 2012-2015 TIP are provided in Table 4.1 (spot improvements) and 4.2 (corridor improvements) and Figure 4.1. TIP



project are also available at www.rvarc.org/mpo/tip.htm.

4.2 City of Roanoke Complete Streets Policy

As discussed in Section 2, in 2008 the City of Roanoke adopted a “complete streets” policy (Appendix E). Through this policy, the City of Roanoke seeks to ensure that all transportation agencies within the City shall routinely plan, fund, design, construct, operate, and maintain their streets according to the Complete Street principles of the *City’s Street Design Guidelines*, creating an attractive connected multimodal network that balances the needs of all users, except where there are demonstrated exceptional circumstances. More specifically, the *Street Design Guidelines* encourage bicycle accommodation along all arterial and collector streets. Additionally, bicycle accommodation on local streets should be provided within the travel lanes shared with motor vehicles and no additional markings, signage, or pavement should be provided unless a designated bicycle route requires the use of a local street. All corridors covered by the City of Roanoke’s Complete Streets Policy are listed in Table 4.4.

4.3 Annual Paving Schedules

As previously noted, the cities of Roanoke and Salem, and the Town of Vinton are responsible for roadway maintenance and construction within their respective jurisdictions. As outlined in Section 3, the City of Roanoke has made significant progress in the provision of bicycle accommodations through its annual paving program. Also as previously noted, VDOT is

responsible for roadway maintenance and construction in Botetourt and Roanoke counties. Despite numerous requests over a several year period by the RVAMPO and local government staff, VDOT has been unable or unwilling to provide a copy of the Salem District’s annual paving schedule to allow for review and development of possible bicycle accommodations along corridors slated for maintenance.

4.4 VDOT Policies and Plans

As previously noted, VDOT has developed several guidance documents and policies related to bicycle accommodation. While VDOT policies are in place, the provision of bicycle accommodation on VDOT maintained roads in the RVAMPO study area has been minimal with limited documentation of the application of the various VDOT plans, policies, and procedures for accommodating cyclists (e.g., CTB Policy for Integrating Bicycle and Pedestrian Accommodations, VDOT Maintenance and Construction Policy, annual paving schedule, etc.) The *Bikeway Plan* encourages greater cooperation between VDOT, RVAMPO, and local governments on efforts, strategies, and opportunities for accommodating cyclists in the RVAMPO study area.



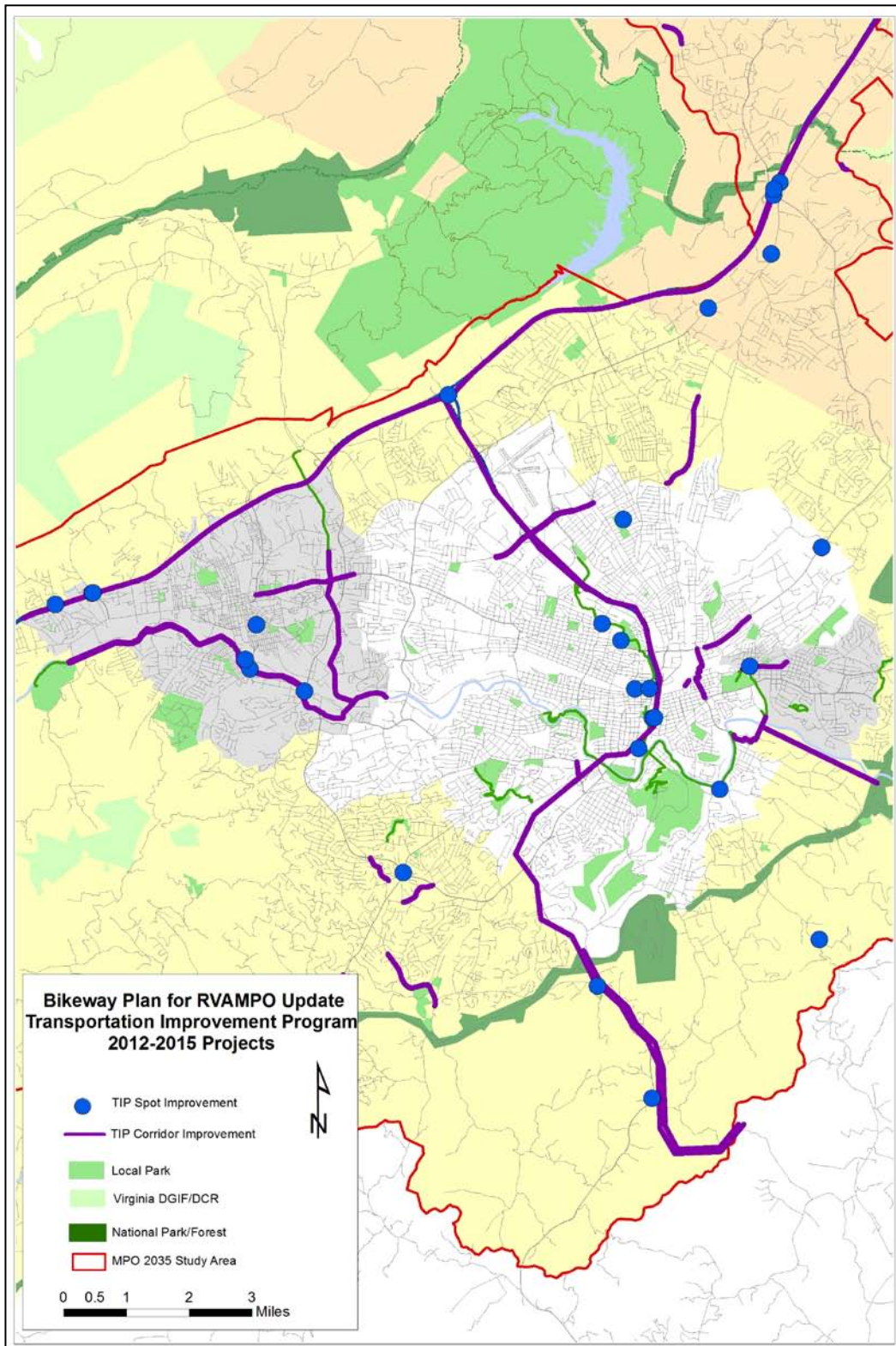


Figure 4.1: RVAMPO Transportation Improvement Program 2012-2015 Projects



Bikeway Plan for the Roanoke Valley Area MPO - 2012 Update

Table 4.1
RVAMPO Transportation Improvement Program
2012-2015 (Spot Improvements)

UPC	System	Jurisdiction	Project	Limits
79039	INTERSTATE	BOTETOURT COUNTY	RTE 81 - INTERIM SAFETY/OPERATIONAL IMPROVEMENTS AT EXIT 150	N/A
97577	INTERSTATE	BOTETOURT COUNTY	RTE 11 BRIDGE (STR# 3212)	I-81 NBL OVER RTE 11
93082	INTERSTATE	BOTETOURT COUNTY	I-81 PAVING AND GUARDRAIL UPGRADES AT EXIT 150	INTERCHANGE AREA AT EXIT 150
77300	PRIMARY	BOTETOURT COUNTY	RTE 11 - REPLACE STRUCTURE OVER TINKER CREEK (STR# 1012)	0.15 MILE EAST RTE 1039 (0.09 MILE)
77302	PRIMARY	BOTETOURT COUNTY	RTE 11 - REPLACE STRUCTURE OVER TINKER CREEK (STR# 1013)	0.38 MILE EAST RTE 822 (0.09 MILE)
90086	SECONDARY	BOTETOURT COUNTY	RTE 738 BRIDGE REPLACEMENT	BRIDGE REPLACEMENT OVER GLADE CREEK (STR # 6142 AND 6143)
90086	SECONDARY	BOTETOURT COUNTY	RTE 738 BRIDGE REPLACEMENT	BRIDGE REPLACEMENT OVER GLADE CREEK (STR # 6142 AND 6143)
17993	SECONDARY	BOTETOURT COUNTY	RTE 738 (WEBSTER BRICK RD) BRIDGE RECONSTRUCTION (STR# 6141)	0.043 MI SOUTH OF RTE 607 NORTH TO 0.069 MI NORTH OF RTE 607 NORTH (0.112 MI)
80518	INTERSTATE	CITY OF ROANOKE	I-581 - INTERIM SAFETY/OPERATIONAL IMPROVEMENTS AT ELM AVE	FROM: SB RAMP ACCESSING ELM AVENUE TO: 6TH STREET TO JEFFERSON STREET ON ELM AVENUE



Bikeway Plan for the Roanoke Valley Area MPO - 2012 Update

Table 4.1 (continued)
 RVAMPO Transportation Improvement Program
 2012-2015 (Spot Improvements)

UPC	System	Jurisdiction	Project	Limits
93194	MISCELLANEOUS	CITY OF ROANOKE	SAFE ROUTES TO SCHOOL - MONTEREY ES TO BRECKINRIDGE MS	WINSLOW DRIVE AND PRESTON AVENUE TO OLIVER ROAD AND OAKLAWN DRIVE
71725	URBAN	CITY OF ROANOKE	10TH STREET - CONSTRUCT 2-STAGE X-ING WITH WARNING DEVICES	FROM: 130' S. SYRACUSE AVE. TO: 110' S. SYRACUSE AVE.
71741	URBAN	CITY OF ROANOKE	RIVERLAND ROAD - INTERSECTION IMPROVEMENT	FROM: INT. OF GARDEN CITY BOULEVARD TO: 0.08 MILE EAST OF INT. WITH BENNINGTON STREET (0.24 MILE)
59794	URBAN	CITY OF ROANOKE	CITY OF ROANOKE - RENOVATION OF N&W RAILWAY STATION	USE OF PASSENGER STATION FOR VISITOR'S CENTER AND MUSEUM
72794	URBAN	CITY OF ROANOKE	DR. MLK, JR. BRIDGE REPLACEMENT	FROM: SALEM AVE. TO: CENTRE AVE.(0.10 MILE)
75255	URBAN	CITY OF ROANOKE	O. WINSTON LINK MUSEUM	DESIGN AND CONSTRUCTION OF VARIOUS MUSEUM COMPONENTS
87187	URBAN	CITY OF ROANOKE	SAFE ROUTES TO SCHOOL - ADDISON MS	AREA WITHIN 1.2 MILES OF ADDISON MS - SIDEWALK AND GREENWAY CONNECTIONS
95178	URBAN	CITY OF ROANOKE	RTE 460 (ORANGE AVE)-RTE 460/BLUE HILLS E/WB LT LANES-SIGNAL	FROM: RTE 460 AT BLUE HILLS DR TO: MEXICO WAY (0.25 MI)
98229	ENHANCEMENT	CITY OF SALEM	ROANOKE RIVER GREENWAY	PH. C504 (2C MOYER CONNECTOR)



Bikeway Plan for the Roanoke Valley Area MPO - 2012 Update

Table 4.1 (continued)
 RVAMPO Transportation Improvement Program
 2012-2015 (Spot Improvements)

UPC	System	Jurisdiction	Project	Limits
78751	URBAN	CITY OF SALEM	RTE 11 (COLORADO ST) BRIDGE REPLACEMENT OVER ROANOKE RIVER	N/A
97199	URBAN	CITY OF SALEM	SAFE ROUTES TO SCHOOL - ANDREW LEWIS MS	E. 4TH STREET AND S. COLLEGE AVENUE TO WALNUT STREET AND PENNSYLVANIA AVENUE
975600	INTERSTATE	ROANOKE COUNTY	I-81 SB RAMP TO I-581 SB (STR# 14891)	I-81 SB TO I-581 SB
975760	INTERSTATE	ROANOKE COUNTY	RTE 112 WILDWOOD ROAD (STR #14865)	I-81 OVER WILDWOOD ROAD
97580	INTERSTATE	ROANOKE COUNTY	RTE 112 WILDWOOD ROAD (STR #14863)	I-81 OVER WILDWOOD ROAD
97581	INTERSTATE	ROANOKE COUNTY	RTE 641 TEXAS HOLLOW ROAD (STR #14861)	I-81 OVER TEXAS HOLLOW ROAD
87694	PRIMARY	ROANOKE COUNTY	RTE 11 (W. MAIN STREET) - DEMOLITION OF BLDGS, BRIDGES, ETC.	PARCEL 57 AT INT. RTE 11 AND 777
82193	PRIMARY	ROANOKE COUNTY	RTE 220 - BRIDGE OVER BACK CREEK (STR#1039)	FROM: 4.45 MILE RTE 419 TO: 3.68 MILE FRANKLIN COUNTY LINE
77305	PRIMARY	ROANOKE COUNTY	RTE 116 BRIDGE REPLACEMENT OVER BACK CREEK	0.10 MILE NORTH RTE 939 (0.24 MI)



Bikeway Plan for the Roanoke Valley Area MPO - 2012 Update

Table 4.1 (continued)
 RVAMPO Transportation Improvement Program
 2012-2015 (Spot Improvements)

UPC	System	Jurisdiction	Project	Limits
95658	PRIMARY	ROANOKE COUNTY	RTE 419 ELECTRIC ROAD - UPGRADE SIGNAL AT RTE 221	INTERSECTION OF RTE 419 AND RTE 221
93160	URBAN	TOWN OF VINTON	WALNUT AVENUE INTERSECTION IMPROVEMENT	WALNUT AVENUE AT 8TH STREET

Source: RVAMPO TIP 2012-2015



Bikeway Plan for the Roanoke Valley Area MPO - 2012 Update

Table 4.2
RVAMPO Transportation Improvement Program
2012-2015 (Corridor Improvements)

UPC	System	Jurisdiction	Project	Limit
18719	SECONDARY	BOTETOURT COUNTY	RTE 652 (MOUNTAIN PASS ROAD) - RECONSTRUCTION (CURVE IMPROVEMENTS)	FROM: 0.09 MILE WEST RTE 658 SOUTH TO: 0.06 MILE EAST RTE 658 SOUTH (0.15 MILE)
18721	SECONDARY	BOTETOURT COUNTY	RTE 652 - RECONSTRUCTION (CURVE IMPROVEMENTS)	FROM: 0.06 MILE WEST RTE 653 TO: 0.07 MILE EAST RTE 653 (0.13 MILE)
52803	SECONDARY	BOTETOURT COUNTY	RTE 779 (CATAWBA RD) - INTERS IMP & BRIDGE OVER TINKER CREEK	FROM: 0.19 MILE EAST RTE 672 EAST TO: 0.24 MILE WEST RTE 672 EAST (0.4213 MILE)
53097	INTERSTATE	BOTETOURT COUNTY	I-81 - WIDEN FROM 4 TO 8 LANES - PE & RW ONLY	FROM: 0.28 MILE SOUTH OF RTE 648 MP 147.45 TO: 0.79 MILE NORTH OF RTE 779E 220 - MP 152.4 (4.9 MILE)
75910	INTERSTATE	BOTETOURT COUNTY	I-81 - IMPROVEMENTS FOR SAFETY & CONGESTION AT EXIT 150	FROM: 0.15 MILE NORTH RTE 1039 (AT NS RR) TO: RTE 653 (1.65 MILE)
92691	INTERSTATE	BOTETOURT COUNTY	I-81 CONCRETE UNDERSEALING/PAVING/GUARDRAIL UPGRADES	RTE 779 BRIDGE, RTE 640 BRIDGE (9.64 MILE)
688	URBAN	CITY OF ROANOKE	13TH STREET AND HOLLINS ROAD - 4 LANE	FROM: JAMISON AVE TO: 0.05 MILE NORTH INT. ORANGE AVE (0.957 MILE)
16595	INTERSTATE	CITY OF ROANOKE	I-581 - VALLEY VIEW INTERCHANGE PHASE II	FROM: 0.881 MILE NORTH OF I-581 MP144.5 TO: HERSHBERGER ROAD
19029	URBAN	CITY OF ROANOKE	COLONIAL AVENUE TO BRANDON AVENUE (0.30 MILE)	WONJU STREET - TRAFFIC/SAFETY IMPROVEMENTS



Bikeway Plan for the Roanoke Valley Area MPO - 2012 Update

Table 4.2 (continued)
 RVAMPO Transportation Improvement Program
 2012-2015 (Corridor Improvements)

UPC	System	Jurisdiction	Project	Limit
80558	URBAN	CITY OF ROANOKE	CORRIDOR IMPROVEMENTS ON HERSHBERGER ROAD	FROM COVE ROAD TO: WILLIAMSON ROAD
80560	URBAN	CITY OF ROANOKE	DEVELOP NORFOLK AVENUE TO URBAN 3 LANES	FROM: CAMPBELL AVE TO: WISE AVE
80561	URBAN	CITY OF ROANOKE	DEVELOP ORANGE AVENUE TO URBAN 6 LANES	FROM: 11TH STREET TO: GUS NICKS BLVD (1.05 MILE)
93116	URBAN	CITY OF ROANOKE	HERSHBERGER ROAD LANDSCAPING	FROM: COVE ROAD TO: RUTGERS STREET
93201	ENHANCEMENT	CITY OF ROANOKE	EXISTING PARKING LOT AT 13TH STREET TO EXISTING TINKER CREEK TRAIL	ROANOKE RIVER GREENWAY
93201	ENHANCEMENT	CITY OF ROANOKE	ROANOKE RIVER GREENWAY - TINKER CREEK GREENWAY CONNECTION	13TH STREET PARKING LOT TO UNDERHILL AVE
8753	URBAN	CITY OF SALEM	RTE 460 (EAST MAIN STREET) - WIDEN TO 3 LANES WITH CURB & SIDEWALK	FROM: RTE 311 (THOMPSON MEMORIAL BLVD) TO: 0.05 MILE EAST INTERSECTION KESSLER MILL ROAD (1.23 MILE)
12532	URBAN	CITY OF SALEM	RTE 460 (EAST MAIN STREET) ù WIDEN TO 4 LNS, CURB, GUTTER, SWLK, REPLACE BR	FROM: 0.013 MILE EAST OF KESSLER MILL ROAD TO: 0.145 EAST RTE 419 (NORTH) (ELECTRIC ROAD) (0.38 MILE)
56409	URBAN	CITY OF SALEM	CONSTRUCTION OF 7 MILE BICYCLE/PEDESTRIAN	FROM: WESTERN LIMITS OF GREEN HILL PARK TO: ECL CITY OF SALEM
72658	URBAN	CITY OF SALEM	MASON CREEK GREENWAY - 5 MILE BICYCLE/PEDESTRIAN TRAIL	FROM: CITY OF SALEM PARALLELING MASON CREEK AT BRANCH DRIVE TO: CITY OF ROANOKE



Bikeway Plan for the Roanoke Valley Area MPO - 2012 Update

Table 4.2 (continued)
 RVAMPO Transportation Improvement Program
 2012-2015 (Corridor Improvements)

UPC	System	Jurisdiction	Project	Limit
86530	URBAN	CITY OF SALEM	CONSTRUCT SHARED USE PATHWAY	FROM: MILL LANE TO: KINGSMILL DRIVE
92944	ENHANCEMENT	CITY OF SALEM	COLORADO STREET TO ROTARY PARK AT RTE 419	ROANOKE RIVER GREENWAY
93200	ENHANCEMENT	CITY OF SALEM	MILL LANE TO EDDY STREET	ROANOKE RIVER GREENWAY
16596	INTERSTATE	MULTIPLE	I-73 PROPOSED CORRIDOR LOCATION ALIGNMENT-PE ONLY	FROM: ROANOKE TO NORTH CAROLINA LINE
3672	SECONDARY	ROANOKE COUNTY	RTE 601 (HOLLINS ROAD) - RECONSTRUCTION & BRIDGE OVER TINKER CREEK	N/A
15187	SECONDARY	ROANOKE COUNTY	RTE 1662 (MCVITTY RD)-RECON & REPL BRIDGE OVER MUD LICK CK	FROM: INT OF RTE 1663 TO: INT OF RTE 419 (0.47 MILE)
15189	SECONDARY	ROANOKE COUNTY	RTE 720 (COLONIAL AVENUE) - RECONSTRUCTION	FROM: 0.05 MILE WEST RTE 687 TO: RTE 419 (0.58 MILE)
15190	SECONDARY	ROANOKE COUNTY	RTE 688 (COTTON HILL ROAD) - RECONSTRUCTION	FROM: 0.09 MILE SOUTH RTE 221 TO: 0.15 MILE SOUTH RTE 934 (0.61 MILE)
16591	INTERSTATE	ROANOKE COUNTY	I-81 - WIDEN FROM 4 TO 8 LANES - PE ONLY	FROM: 0.047 MILE NORTH OF BUTT HOLLOW ROAD (RTE 641) MP 135.9 TO: 0.20 MILE NORTH OF GOODWIN AVENUE (RTE 635) MP 138.6 (2.566 MILE)
16593	INTERSTATE	ROANOKE COUNTY	I-81 - WIDEN FROM 4 TO 8 LANES - PE ONLY	FROM: 0.881 MILE NORTH OF I-581 MP 144.5 TO: 0.28 MILE SOUTH OF RTE 648 MP 147.45 (3 MILE)



Bikeway Plan for the Roanoke Valley Area MPO - 2012 Update

Table 4.2 (continued)
 RVAMPO Transportation Improvement Program
 2012-2015 (Corridor Improvements)

UPC	System	Jurisdiction	Project	Limit
17698	PRIMARY	ROANOKE COUNTY	RTE 11/460 (W. MAIN STREET)- WIDEN TO 4-LN W/CURB, GUTTER, AND RAISED MEDIAN	FROM: 0.055 MILE EAST OF WCL SALEM TO: 0.10 MILE WEST RTE 830 (2.188 MILE)
18723	SECONDARY	ROANOKE COUNTY	RTE 613 (MERRIMAN ROAD) - RECONST. & WIDEN DRAINAGE STRUCTURE AT STREAM	N/A
50006	PRIMARY	ROANOKE COUNTY	RTE 221 - RECONSTRUCT TO 4 LANES - RW	FROM: 0.02 MILE SOUTH RTE 688 TO: 0.92 MILE NORTH RTE 688 (0.94 MILE)
53094	INTERSTATE	ROANOKE COUNTY	I-81 - WIDEN FROM 4 TO 8 LANES - PE ONLY	FROM: 0.20 MILE NORTH OF GOODWIN AVENUE (RTE 635) MP 138.6 TO: 0.75 MILE NORTH OF THOMPSON MEMORIAL DRIVE (RTE 311) MP 140.9 (2.5 MILE)
53095	INTERSTATE	ROANOKE COUNTY	I-81 - WIDEN FROM 4 TO 8 LANES - PE ONLY	FROM: 0.75 MILE NORTH OF THOMPSON MEMORIAL DRIVE (RTE 311) MP 140 TO: 0.786 MILE SOUTH OF I-581 MP 143.1 (2.2 MILE)
53096	INTERSTATE	ROANOKE COUNTY	I-81 - WIDEN FROM 4 TO 8 LANES - PE ONLY	FROM: 0.786 MILE SOUTH OF I-581 MP 143.1 TO: 0.881 MILE NORTH OF I-581 MP 144.5 (1.667 MILE)
80056	INTERSTATE	ROANOKE COUNTY	I-73 ENGINEERING AND RIGHT-OF-WAY	ROANOKE COUNTY
91191	ENHANCEMENT	ROANOKE COUNTY	ROANOKE RIVER GREENWAY	FRPM: ROANOKE CITY EASTERN LIMIT TO: BLUE RIDGE PARKWAY/EXPLORE PARK
95812	PRIMARY	ROANOKE COUNTY	RTE 221 - RECONSTRUCT TO 4 LANES - CN	FROM: 0.02 MILE SOUTH RTE 688 TO: 1.93 MILE SOUTH RTE 419 (0.82 MILE)



Table 4.2 (continued)
 RVAMPO Transportation Improvement Program
 2012-2015 (Corridor Improvements)

UPC	System	Jurisdiction	Project	Limit
96139	PRIMARY	ROANOKE COUNTY	RTE 221 - RECONSTRUCT TO 4 LANES - CN	FROM: 0.02 MILE SOUTH RTE 688 TO: 0.92 MILE NORTH RTE 688 (0.94 MILE)
97171	ENHANCEMENT	ROANOKE COUNTY	GREEN HILL PARK TO MILL LANE	ROANOKE RIVER GREENWAY
76677	URBAN	TOWN OF VINTON	WALNUT AVENUE - UPGRADE CORRIDOR WITH CURB, GUTTER, BIKE LANES & SIDEWALK	FROM: WCL TO: LEE AVENUE

Source: RVAMPO TIP 2012-2015



4.5 Bikeway Plan Priority List and Vision Lists

Corridors

As previously noted, the *Bikeway Plan for the RVAMPO* generally endorses consideration of efforts to better accommodate cyclists on all corridors in the MPO study area, regardless of inclusion the roadways on the *Bikeway Plan* Priority List Vision lists for the respective MPO localities. However, the Priority and Vision lists will assist in prioritizing corridors within the RVAMPO study area to receive limited funding for needed improvements.

Corridors comprising the Priority List generally form the foundation of the current and/or planned bikeway system in the RVAMPO with Vision List corridors supporting the framework of the Priority List and fill in any gaps in connectivity. In developing the Priority and Vision lists of corridors for consideration of bicycle accommodation the RVAMPO sought input and guidance from a range of stakeholders including local government staff, the Regional Bicycle Advisory Committee, Roanoke Valley Greenway Commission, area cyclists, and the general public (see Bicycle User Survey summary in Section 5).

The roadways included in the Priority and Vision lists generally serve to connect the regional transportation network to activity centers (e.g., employment centers, commercial/retail, public spaces, etc.), area greenways, transit systems, and other points of interest or destinations in the RVAMPO study area. Additionally the lists include many popular recreational cycling routes. Priority and Vision corridors for each RVAMPO locality are provided in Table 4.3-4.7 and Figure 4.2). Additionally, these corridors and associated

attribute data (e.g., road segment, speed limit, existing bicycle accommodation(s), design geometrics, etc.) are viewable on the RVARC Online Map available at www.rvarc.org/onlinemap (Figure 4.3).



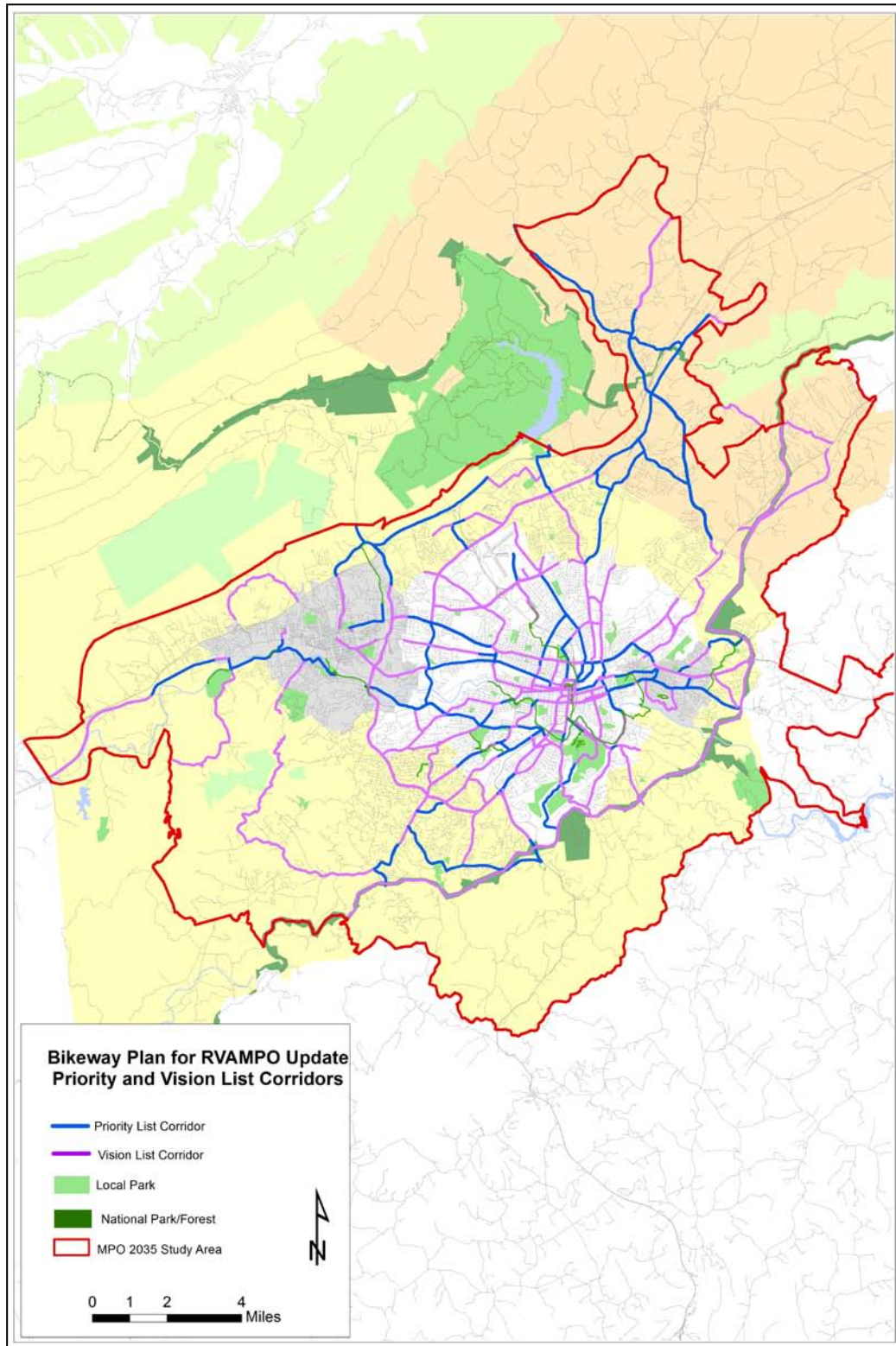


Figure 4.2: Bikeway Plan Priority List and Vision List Corridors



Bikeway Plan for the Roanoke Valley Area MPO - 2012 Update

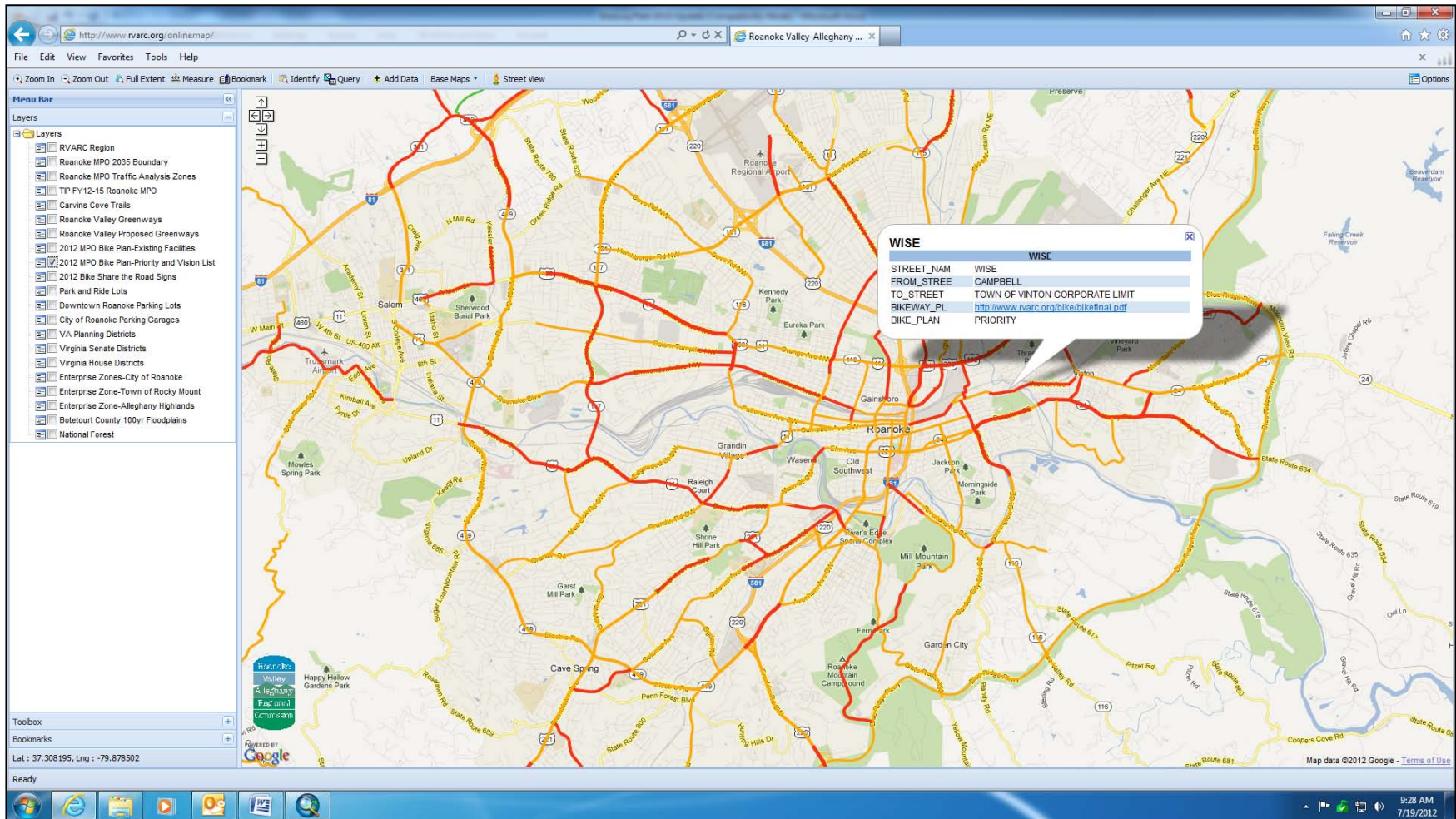


Figure 4.3: RVARC Online Map



Bikeway Plan for the Roanoke Valley Area MPO - 2012 Update

Table 4.3
Bikeway Plan Priority List and Vision List Corridors
Botetourt County

STREET	FROM	TO	BIKEWAY PLAN	LOCALITY	INTERJURISDICTIONAL CONNECTION	GREENWAY CONNECTION
ALTERNATE US220 (CLOVERDALE RD)	ROANOKE COUNTY CORPORATE LIMIT	US 11	PRIORITY	Botetourt County	Roanoke County	No
BLUE RIDGE PARKWAY	ROANOKE COUNTY CORPORATE LIMIT	US460	VISION	National Park Service (Botetourt County)	Roanoke County	No
BLUE RIDGE PARKWAY	US460	MPO BOUNDARY	VISION	National Park Service (Botetourt County)	No	No
CATAWBA (779)	US220 (ROANOKE RD)	MPO BOUNDARY	PRIORITY	Botetourt County	No	No
LEE HIGHWAY/US 11	ROANOKE COUNTY CORPORATE LIMIT	STONE BATTERY ROAD	PRIORITY	Botetourt County	Roanoke County	No
MOUNTAIN PASS (652)	US11 (LEE HWY)	US460	VISION	Botetourt County	No	No
READ MOUNTAIN (654)	ALTERNATE US220 (CLOVERDALE RD)	US 11	PRIORITY	Botetourt County	No	No
RESERVOIR (648)	ROANOKE COUNTY CORPORATE LIMIT	TERMINUS	RURAL, CCNR	Botetourt County	Roanoke County	Carvins Cove Trails
SANDERSON (605)	ROANOKE COUNTY CORPORATE LIMIT	READ MOUNTAIN	PRIORITY	Botetourt County	Roanoke County	No
STONE BATTERY (651)	US11 (LEE HWY)	MPO BOUNDARY	VISION	Botetourt County	No	No
US 220	GLEBE (675)	MPO BOUNDARY	VISION	Botetourt County	No	No
US 220 (ROANOKE RD)	US11 (LEE HWY)	GLEBE (675)	PRIORITY	Botetourt County	No	No
VALLEY (779)	US11 (LEE HWY)	MPO BOUNDARY	PRIORITY	Botetourt County	No	No
WEBSTER (738)	US460	US460	VISION	Botetourt County	No	No



Bikeway Plan for the Roanoke Valley Area MPO - 2012 Update

Table 4.4
Bikeway Plan Priority List and Vision List Corridors
City of Roanoke

STREET	FROM	TO	BIKEWAY PLAN	LOCALITY	INTERJURISDICTIONAL CONNECTION	GREENWAY CONNECTION
10TH NW	MOORMAN	SALEM	VISION	City of Roanoke	No	No
10TH SW	MOORMAN	ORANGE	PRIORITY	City of Roanoke	No	Lick Run
10TH SW	SALEM	CAMPBELL	VISION	City of Roanoke	No	No
13TH SE	JAMISON	WISE	PRIORITY	City of Roanoke	No	Tinker Creek
13TH SE	JAMISON	TAYLOE	PRIORITY	City of Roanoke	No	Tinker Creek, Roanoke River
13TH SE	TAYLOE	BROWNLEE	PRIORITY	City of Roanoke	No	Tinker Creek, Roanoke River
13TH SW	MEMORIAL BRIDGE	PATTERSON	VISION	City of Roanoke	No	Roanoke River
24TH	BAKER	MELROSE	PRIORITY	City of Roanoke	No	No
2ND	FRANKLIN	SALEM	VISION	City of Roanoke	No	Lick Run
5TH NW	GILMER	ORANGE	VISION	City of Roanoke	No	No
5TH NW	NORFOLK SOUTHERN BRIDGE	GILMER	VISION	City of Roanoke	No	No
5TH SW	SALEM	NORFOLK SOUTHERN BRIDGE	PRIORITY	City of Roanoke	No	No
5TH SW	SALEM	ELM	VISION	City of Roanoke	No	No
9TH	TAZEWELL	HIGHLAND	VISION	City of Roanoke	No	Roanoke River
9TH	HIGHLAND	RIVERLAND	VISION	City of Roanoke	No	Roanoke River



Bikeway Plan for the Roanoke Valley Area MPO - 2012 Update

Table 4.4 (continued)
Bikeway Plan Priority List and Vision List Corridors
City of Roanoke

STREET	FROM	TO	BIKEWAY PLAN	LOCALITY	INTERJURISDICTIONAL CONNECTION	GREENWAY CONNECTION
AVENHAM	FRANKLIN	BROADWAY	VISION	City of Roanoke	No	Roanoke River
AVIATION	MUNICIPAL	HERSHBERGER	PRIORITY	City of Roanoke	No	No
BELLE	KING	ROANOKE COUNTY CORPORATE LIMIT	VISION	City of Roanoke	Roanoke County	No
BENNINGTON	RIVERLAND	13TH SE	VISION	City of Roanoke	No	Roanoke River
BOULEVARD	PATTERSON	BAKER	VISION	City of Roanoke	No	No
BRAMBLETON	ROANOKE COUNTY CORPORATE LIMIT	MONTGOMERY	PRIORITY	City of Roanoke	Roanoke County	Murray Run
BRAMBLETON	MONTGOMERY	BRANDON	VISION	City of Roanoke	Roanoke County	No
BRAMBLETON	SEWELL	WELCH	PRIORITY	City of Roanoke	Roanoke County	No
BRANDON	EDGEWOOD	BRAMBLETON	PRIORITY	City of Roanoke	City of Salem	No
BRANDON	BRAMBLETON	MAIN	VISION	City of Roanoke	No	No
BRANDON	MAIN	23RD	PRIORITY	City of Roanoke	No	No
BRANDON	COLONIAL	FRANKLIN	PRIORITY	City of Roanoke	No	No
BRANDON	COLONIAL	23RD	PRIORITY	City of Roanoke	No	No
BRANDON	EDGEWOOD	CITY OF SALEM CORPORATE LIMIT	PRIORITY	City of Roanoke	City of Salem	Roanoke River
BROADWAY	FRANKLIN	MCCLANAHAN	VISION	City of Roanoke	No	No
BULLITT	6TH SE	13TH SE	VISION	City of Roanoke	No	No
BURRELL	ORGANGE	LIBERTY	PRIORITY	City of Roanoke	No	Lick Run
CAMPBELL	WILLIAMSON	NORFOLK	PRIORITY	City of Roanoke	No	Lick Run
CAMPBELL	13TH SW	WILLIAMSON	VISION	City of Roanoke	No	Lick Run



Bikeway Plan for the Roanoke Valley Area MPO - 2012 Update

Table 4.4 (continued)
Bikeway Plan Priority List and Vision List Corridors
City of Roanoke

STREET	FROM	TO	BIKEWAY PLAN	LOCALITY	INTERJURISDICTIONAL CONNECTION	GREENWAY CONNECTION
COLONIAL	WINDING WAY	26TH	PRIORITY	City of Roanoke	No	Murray Run
COLONIAL	WONJU	BRANDON	PRIORITY	City of Roanoke	No	Murray Run
COLONIAL	26TH	BRANDON	PRIORITY	City of Roanoke	No	Murray Run
COLONIAL	WINDING WAY	ROANOKE COUNTY CL	VISION	City of Roanoke	Yes	Murray Run
COVE	PETERS CREEK	HERSHBERGER	VISION	City of Roanoke	Roanoke County	No
COVE	PETERS CREEK	GREEN RIDGE	VISION	City of Roanoke	Roanoke County	No
COVE	HERSHBERGER	LAFAYETTE	VISION	City of Roanoke	No	No
DALE	13TH SE	VERNON	PRIORITY	City of Roanoke	Town of Vinton	Tinker Creek
DALE	MT. VERNON	TOWN OF VINTON CORPORATE LIMIT	VISION	City of Roanoke	Town of Vinton	Tinker Creek
DEYERLE	BRANDON	MUD LICK	VISION	City of Roanoke	No	No
EDGEWOOD	BRANDON	MEMORIAL	VISION	City of Roanoke	No	No
ELM SE	WILLIAMSON	6TH SE	VISION	City of Roanoke	No	Mill Mountain
ELM SW	MAIN	WILLIAMSON	VISION	City of Roanoke	No	Mill Mountain, Roanoke River
FRANKLIN	ELECTRIC	AVENHAM	PRIORITY	City of Roanoke	Roanoke County	No
FRANKLIN	AVENHAM	BRANDON	VISION	City of Roanoke	No	No
FRANKLIN	BRANDON	RESERVE	VISION	City of Roanoke	No	Roanoke River
FRANKLIN	RESERVE	ELM	VISION	City of Roanoke	No	Roanoke River
FRANKLIN	ELM	WILLIAMSON	VISION	City of Roanoke	No	Mill Mountain
FRANKLIN/US220	ELECTRIC/419	BLUE RIDGE PARKWAY	VISION	City of Roanoke	Roanoke County	No



Bikeway Plan for the Roanoke Valley Area MPO - 2012 Update

Table 4.4 (continued)
Bikeway Plan Priority List and Vision List Corridors
City of Roanoke

STREET	FROM	TO	BIKEWAY PLAN	LOCALITY	INTERJURISDICTIONAL CONNECTION	GREENWAY CONNECTION
GAINSBORO	ORANGE	GILMER	PRIORITY	City of Roanoke	No	Lick Run
GAINSBORO	GILMER	SALEM	VISION	City of Roanoke	No	Lick Run
GARDEN CITY	YELLOW MOUNTAIN ROAD	RIVERLAND	VISION	City of Roanoke	No	No
GRANDIN	GARST MILL	BRANDON	VISION	City of Roanoke	Roanoke County	No
GRANDIN	BRANDON	MEMORIAL	PRIORITY	City of Roanoke	No	Murray Run, Roanoke River
GRANDIN	ELECTRIC/419	DOVER	VISION	City of Roanoke	Roanoke County	No
GRANDIN	MAIDEN	MEMORIAL	VISION	City of Roanoke	No	No
GUS NICKS	ORANGE	TOWN OF VINTON CORPORATE LIMIT	PRIORITY	City of Roanoke	Town of Vinton	No
HERSHBERGER	PETERS CREEK	COVE	VISION	City of Roanoke	No	No
HERSHBERGER	COVE	WILLIAMSON	VISION	City of Roanoke	No	No
HERSHBERGER	WILLIAMSON	ROANOKE COUNTY CORPORATE LIMIT	VISION	City of Roanoke	Roanoke County	No
HOLLINS	WISE	ORANGE	PRIORITY	City of Roanoke	No	No
HOLLINS	ORANGE	PLANTATION	VISION	City of Roanoke	No	No
JAMISON	6TH SE	13TH SE	VISION	City of Roanoke	No	No
JB FISHBURN PKWY	SYLVAN	BLUE RIDGE PARKWAY	VISION	City of Roanoke	No	Mill Mountain
JEFFERSON	RESERVE	WELLER	PRIORITY	City of Roanoke	No	Roanoke River
JEFFERSON	WELLER	MCCLANAHAN	VISION	City of Roanoke	No	Roanoke River



Bikeway Plan for the Roanoke Valley Area MPO - 2012 Update

Table 4.4 (continued)
Bikeway Plan Priority List and Vision List Corridors
City of Roanoke

STREET	FROM	TO	BIKEWAY PLAN	LOCALITY	INTERJURISDICTIONAL CONNECTION	GREENWAY CONNECTION
JEFFERSON	RESERVE	SALEM	VISION	City of Roanoke	No	Mill Mountain, Roanoke River, Lick Run
KIMBALL	WILLIAMSON	ORANGE	PRIORITY	City of Roanoke	No	Lick Run
KING	TOWN OF VINTON CORPORATE LIMIT	ORANGE	VISION	City of Roanoke	Town of Vinton	No
LAFAYETTE	COVE	MELROSE	VISION	City of Roanoke	No	No
LIBERTY	PLANTATION	HOLLINS	VISION	City of Roanoke	No	No
LIBERTY	BURRELL	COURTLAND	PRIORITY	City of Roanoke	No	Lick Run
LIBERTY	COURTLAND	WILLIAMSON	VISION	City of Roanoke	No	No
LIBERTY	PLANTATION	HOLLINS	VISION	City of Roanoke	No	No
MAIN	BRANDON	WINONA	VISION	City of Roanoke	No	Roanoke River
MAIN	ELM	WINONA	PRIORITY	City of Roanoke	No	Roanoke River
MAIN	BRANDON	WINONA	VISION	City of Roanoke	No	Roanoke River
MCCLANAHAN	FRANKLIN	JEFFERSON	VISION	City of Roanoke	No	Roanoke River
MELROSE	PETERS CREEK	LAFAYETTE	PRIORITY	City of Roanoke	No	No
MELROSE	CITY OF SALEM CORPORATE LIMIT	PETERS CREEK	PRIORITY	City of Roanoke	City of Salem	No
MELROSE	LAFAYETTE	SALEM TURNPIKE	VISION	City of Roanoke	No	No



Bikeway Plan for the Roanoke Valley Area MPO - 2012 Update

Table 4.4 (continued)
Bikeway Plan Priority List and Vision List Corridors
City of Roanoke

STREET	FROM	TO	BIKEWAY PLAN	LOCALITY	INTERJURISDICTIONAL CONNECTION	GREENWAY CONNECTION
MEMORIAL	CAMPBELL	GRANDIN	PRIORITY	City of Roanoke	No	Roanoke River
MEMORIAL	CAMBRIDGE	EDGEWOOD	VISION	City of Roanoke	No	No
MILL MOUNTAIN PARK SPUR	J B FISHBURN PARKWAY	BLUE RIDGE PARKWAY	PRIORITY	City of Roanoke	Roanoke County	Mill Mountain
MOUNT PLEASANT	RIVERLAND	ROANOKE COUNTY CORPORATE LIMIT	VISION	City of Roanoke	Roanoke County	No
MOUNT PLEASANT	RUTROUGH	ROANOKE COUNTY CORPORATE LIMIT	VISION	City of Roanoke	Roanoke County	Roanoke River
MUD LICK	BRANDON	GRANDIN	VISION	City of Roanoke	Roanoke County	No
OLD MOUNTAIN	HOLLINS	ROANOKE COUNTY CORPORATE LIMIT	VISION	City of Roanoke	Roanoke County	No
ORANGE	WILLIAMSON	GUS NICKS	PRIORITY	City of Roanoke	No	No
ORANGE	GUS NICKS	ROANOKE COUNTY CORPORATE LIMIT	VISION	City of Roanoke	Roanoke County	No
ORANGE	SALEM TURNPIKE	5TH	VISION	City of Roanoke	No	Lick Run
ORANGE	5TH	WILLIAMSON	VISION	City of Roanoke	No	Lick Run
OVERLAND	COLONIAL	BRAMBLETON	PRIORITY	City of Roanoke	No	No
PATTERSON	BOULEVARD	CAMPBELL	VISION	City of Roanoke	No	No
PETERS CREEK	MELROSE	ROANOKE COUNTY CORPORATE LIMIT (COVE)	VISION	City of Roanoke	City of Roanoke	No
PETERS CREEK EXTENSION	MELROSE	BRANDON	PRIORITY	City of Roanoke	Roanoke County	Roanoke River



Bikeway Plan for the Roanoke Valley Area MPO - 2012 Update

Table 4.4 (continued)
Bikeway Plan Priority List and Vision List Corridors
City of Roanoke

STREET	FROM	TO	BIKEWAY PLAN	LOCALITY	INTERJURISDICTIONAL CONNECTION	GREENWAY CONNECTION
PIEDMONT	WALNUT	RIVERLAND	VISION	City of Roanoke	No	Roanoke River, Mill Mountain
PLANTATION	HOLLINS	ROANOKE COUNTY CORPORATE LIMIT	VISION	City of Roanoke	Yes	No
PLANTATION	ORANGE	HOLLINS	VISION	City of Roanoke	No	No
RESERVE	FRANKLIN	JEFFERSON	VISION	City of Roanoke	No	Roanoke River
RIVERLAND	GARDEN CITY	MOUNT PLEASANT	VISION	City of Roanoke	No	No
RIVERLAND	GARDEN CITY	BENNINGTON	PRIORITY	City of Roanoke	No	No
RIVERLAND	PIEDMONT	GARDEN CITY	VISION	City of Roanoke	No	Roanoke River
RUTGERS	HERSHBERGER	TOWNE SQUARE	VISION	City of Roanoke	Roanoke County	No
SALEM	10TH	WILLIAMSON	VISION	City of Roanoke	No	Lick Run
SALEM TURNPIKE	24TH	30TH	PRIORITY	City of Roanoke	No	No
SALEM TURNPIKE	30TH	CITY OF SALEM CORPORATE LIMIT	VISION	City of Roanoke	City of Salem	No
SALEM TURNPIKE	ORANGE	MELROSE	VISION	City of Roanoke	No	No
SHENANDOAH	PETERS CREEK	24TH	PRIORITY	City of Roanoke	City of Salem	No
SHENANDOAH	24TH	5TH	PRIORITY	City of Roanoke	City of Salem	No
SHENANDOAH	PETERS CREEK	CITY OF SALEM CORPORATE LIMIT	VISION	City of Roanoke	City of Salem	No
SHENANDOAH	5TH	WILLIAMSON	VISION	City of Roanoke	City of Salem	Lick Run
TAZEWELL	WILLIAMSON	13TH SE	VISION	City of Roanoke	No	No
VALLEY VIEW	HERSHBERGER	I-581	VISION	City of Roanoke	No	Lick Run



Bikeway Plan for the Roanoke Valley Area MPO - 2012 Update

Table 4.4 (continued)
Bikeway Plan Priority List and Vision List Corridors
City of Roanoke

STREET	FROM	TO	BIKEWAY PLAN	LOCALITY	INTERJURISDICTIONAL CONNECTION	GREENWAY CONNECTION
WALNUT	JEFFERSON	J B FISHBURN PARKWAY	PRIORITY	City of Roanoke	No	Mill Mountain, Roanoke River
WELLS	GAINSBORO	WILLIAMSON	VISION	City of Roanoke	No	Lick Run
WILLIAMSON	ANGELL	HERSHBERGER	PRIORITY	City of Roanoke	Roanoke County	No
WILLIAMSON	HERSHBERGER	ROANOKE COUNTY CORPORATE LIMIT	VISION	City of Roanoke	Roanoke County	No
WILLIAMSON	WELLS	ELM	VISION	City of Roanoke	No	Lick Run, Mill Mountain
WILLIAMSON	ORANGE	WELLS	PRIORITY	City of Roanoke	No	Lick Run, Mill Mountain
WILLIAMSON	ANGELL	ORANGE	PRIORITY	City of Roanoke	No	No
WISE	CAMPBELL	TOWN OF VINTON CORPORATE LIMIT	PRIORITY	City of Roanoke	Town of Vinton	Tinker Creek, Lick Run, Mill Mountain
WISE	NORFOLK	18TH SE	VISION	City of Roanoke	Town of Vinton	Tinker Creek, Lick Run, Mill Mountain
WISE	CAMPBELL	14TH SE	VISION	City of Roanoke	No	Tinker Creek, Lick Run, Mill Mountain
WONJU	COLONIAL	FRANKLIN	VISION	City of Roanoke	No	No
YELLOW MOUNTAIN	JEFFERSON	ROANOKE COUNTY CORPORATE LIMIT	VISION	City of Roanoke	City of Roanoke	Mill Mountain, Roanoke River



Bikeway Plan for the Roanoke Valley Area MPO - 2012 Update

Table 4.5
Bikeway Plan Priority List and Vision List Corridors
Roanoke County

STREET	FROM	TO	BIKEWAY PLAN	LOCALITY	INTERJURISDICTIONAL CONNECTION	GREENWAY CONNECTION
ALTERNATE US220 (CLOVERDALE RD)	CHALLENGER (US 460)	BOTETOURT COUNTY CORPORATE LIMIT	VISION	Roanoke County	Botetourt County	No
BELLE HAVEN (1836)	LOCH HAVEN	NORTH BARRENS (1832)	VISION	Roanoke County	No	No
BENT MOUNTAIN (US 221)	COTTON HILL (688)	TWELVE O'CLOCK KNOB (694)	VISION	Roanoke County	No	No
BENT MOUNTAIN (US 221)	CRYSTAL CREEK (897)	COTTON HILL (688)	PRIORITY	Roanoke County	No	No
BLUE RIDGE PARKWAY	BOTETOURT COUNTY CORPORATE LIMIT	STEWARTSVILLE (SR 24)	VISION	National Park Service (Roanoke County)	Roanoke County	No
BLUE RIDGE PARKWAY	STEWARTSVILLE (SR 24)	MILL MOUNTAIN PARKWAY SPUR	VISION	National Park Service (Roanoke County)	City of Roanoke	Roanoke River
BLUE RIDGE PARKWAY	MILL MOUNTAIN PARKWAY SPUR	US 220 (FRANKLIN)	VISION	National Park Service (Roanoke County)	City of Roanoke	No
BLUE RIDGE PARKWAY	US220 (FRANKLIN)	MPO BOUNDARY	VISION	National Park Service (Roanoke County)	City of Roanoke	No
BONSACK (603)	CHALLENGER (US 460)	CHALLENGER (US 460)	VISION	Roanoke County	Botetourt County	No
BRAMBLETON (US221)	CRYSTAL CREEK (897)	CITY OF ROANOKE CORPORATE LIMIT	VISION	Roanoke County	City of Roanoke	No
BUCK MOUNTAIN (679)	STARKEY (904)	FRANKLIN (US 220)	PRIORITY	Roanoke County	No	No
CARSON (758)	CITY OF ROANOKE CORPORATE LIMIT	CHALLENGER (US 460)	VISION	Roanoke County	City of Roanoke	No



Bikeway Plan for the Roanoke Valley Area MPO - 2012 Update

Table 4.5 (continued)
Bikeway Plan Priority List and Vision List Corridors
Roanoke County

STREET	FROM	TO	BIKEWAY PLAN	LOCALITY	INTERJURISDICTIONAL CONNECTION	GREENWAY CONNECTION
CARVINS COVE (740)	CATAWBA VALLEY (SR311)	BOTETOURT COUNTY CORPORATE LIMIT	RURAL, CCNR	Roanoke County	Botetourt County	Carvins Cove
CATAWBA VALLEY (311)	ELECTRIC/419	MPO BOUNDARY	PRIORITY	Roanoke County	No	Hanging Rock Battlefield Trail
COLONIAL (687/720)	BRAMBLETON (US 221)	ELECTRIC/419	PRIORITY	Roanoke County	No	No
COLONIAL (720)	ELECTRIC/419	CITY OF ROANOKE CORPORATE LIMIT	VISION	Roanoke County	No	No
COTTON HILL (688)	BENT MOUNTAIN (US 221)	BLUE RIDGE PARKWAY	PRIORITY	Roanoke County	No	No
DALLAS (1807)	WEBSTER (1808)	ENON (1806)	VISION	Roanoke County	No	No
DIUGUIDS (760)	CITY OF SALEM CORPORATE LIMIT	GREEN HILL PARK (1185)	PRIORITY	Roanoke County	City of Salem	Roanoke River
DUTCH OVEN	ELECTRIC/419	TIMBERVIEW (1404)	RURAL, CCNR	Roanoke County	No	Hanging Rock Battlefield Trail, Carvins Cove
ELECTRIC/419	CITY OF SALEM CORPORATE LIMIT	CATAWBA VALLEY (SR 311)	PRIORITY	Roanoke County	City of Salem	Hanging Rock Battlefield Trail
ELECTRIC/419	CITY OF ROANOKE CORPORATE LIMIT (FRANKLIN)	CITY OF SALEM CORPORATE LIMIT (KEAGY)	VISION	Roanoke County	City of Roanoke, City of Salem	Roanoke River, Mill Mountain
ENON (1806)	DALLAS (1807)	WALROND (1804)	VISION	Roanoke County	No	No
FEATHER (654)	WASHINGTON (SR 24)	HARDY (634)	VISION	Roanoke County	Town of Vinton	No



Bikeway Plan for the Roanoke Valley Area MPO - 2012 Update

Table 4.5 (continued)
Bikeway Plan Priority List and Vision List Corridors
Roanoke County

STREET	FROM	TO	BIKEWAY PLAN	LOCALITY	INTERJURISDICTIONAL CONNECTION	GREENWAY CONNECTION
FRANKLIN/US 220	CITY OF ROANOKE CORPORATE LIMIT	BUCK MOUNTAIN (679)	PRIORITY	Roanoke County	City of Roanoke	Blue Ridge Parkway
GARST MILL (682)	BRAMBLETON (US 221)	CITY OF ROANOKE CORPORATE LIMIT	VISION	Roanoke County	City of Roanoke	No
HARBORWOOD (639)	RIVERSIDE	POOR MOUNTAIN	VISION	Roanoke County	City of Salem	Roanoke River
HARDY (634)	TOWN OF VINTON CORPORATE LIMIT	BLUE RIDGE PARKWAY	PRIORITY	Roanoke County	Town of Vinton	Wolf Creek
HOLLINS (601)	SHADWELL (627)	PLANTATION (SR 115)	PRIORITY	Roanoke County	No	No
JAE VALLEY (SR 116)	CITY OF ROANOKE CORPORATE LIMIT	BLUE RIDGE PARKWAY	VISION	Roanoke County	City of Roanoke	No
JOHN RICHARDSON (743)	PLANTATION (SR115)	OAKLAND (1855)	PRIORITY	Roanoke County	Yes	No
LABAN (1849)	NORTH BARRENS (1832)	WEBSTER (1808)	VISION	Roanoke County	No	Yes
LOCH HAVEN (F-071/1894)	ELECTRIC/419	BELLE HAVEN (1836)	PRIORITY	Roanoke County	No	Yes
MERRIMAN (613)	RANCHCREST (907)	STARKEY (904)	PRIORITY	Roanoke County	No	No
MOUNTAIN VIEW (651)	TOWN OF VINTON CORPORATE LIMIT	BLUE RIDGE PARKWAY	PRIORITY	Roanoke County	Town of Vinton	No
NORTH BARRENS (1832)	BELLE HAVEN (1836)	LABAN (849)	VISION	Roanoke County	No	No
OGDEN (687)	COLONIAL (720)	ELECTRIC/419	VISION	Roanoke County	City of Roanoke	No
PETERS CREEK (SR 117)	CITY OF ROANOKE CORPORATE LIMIT	WILLIAMSON	VISION	Roanoke County	City of Roanoke	No
PLANTATION	1-81	CROWE HOLLOW	PRIORITY	Roanoke County	Botetourt County	Tinker Creek (Hollins)
PLANTATION (SR 115)	I-81	WILLIAMSON/US11	PRIORITY	Roanoke County	No	No



Bikeway Plan for the Roanoke Valley Area MPO - 2012 Update

Table 4.5 (continued)
Bikeway Plan Priority List and Vision List Corridors
Roanoke County

STREET	FROM	TO	BIKEWAY PLAN	LOCALITY	INTERJURISDICTIONAL CONNECTION	GREENWAY CONNECTION
PLANTATION (SR 115)	WILLIAMSON/US 11	CITY OF ROANOKE CORPORATE LIMIT	VISION	Roanoke County	City of Roanoke	No
RANCHCREST(907)	BRAMBLETON (US 221)	MERRIMAN (613)	PRIORITY	Roanoke County	No	No
RESERVOIR (648)	WILLIAMSON/US11	BOTETOURT COUNTY CL	RURAL, CCNR	Roanoke County	Botetourt County	Carvins Cove Trails
SANDERSON (605)	SHADWELL (601)	BOTETOURT CL	PRIORITY	Roanoke County	Botetourt County	No
SHADWELL (601)	WILLIAMSON/US11	HOLLINS (605)	PRIORITY	Roanoke County	Botetourt County	No
STARKEY (904)	ELECTRIC/419	BUCK MOUNTAIN (679)	VISION	Roanoke County	No	No
STARKEY (904)	MERRIMAN (613)	BUCK MOUNTAIN (679)	PRIORITY	Roanoke County	No	No
THIRLANE (626)	PETERS CREEK (SR 117)	WOOD HAVEN (628)	PRIORITY	Roanoke County	City of Roanoke	No
THOMPSON MEMORIAL (SR 311)	CITY OF SALEM CORPORATE LIMIT	CATAWBA VALLEY (SR 311)	PRIORITY	Roanoke County	City of Salem	Hanging Rock Battlefield Trail, Mason Creek
TIMBERVIEW (1404)	DUTCH OVEN (683)	TERMINUS	RURAL, CCNR	Roanoke County	No	Carvins Cove, Hanging Rock Battlefield Trail
TWELVE O'CLOCK KNOB (694)	CITY OF SALEM CORPORATE LIMIT	BENT MOUNTAIN (US 221)	VISION	Roanoke County	City of Salem	No
WALROND (1804)	WALDRON PARK RD (843)	PLANTATION (SR 115)	VISION	Roanoke County	No	No
WEBSTER (1808)	LABAN (849)	DALLAS (1807)	VISION	Roanoke County	No	No
WEST MAIN (US 460)	CITY OF SALEM CORPORATE LIMIT	TECHNOLOGY (830)	PRIORITY	Roanoke County	City of Salem	No



Bikeway Plan for the Roanoke Valley Area MPO - 2012 Update

Table 4.5 (continued)
Bikeway Plan Priority List and Vision List Corridors
Roanoke County

STREET	FROM	TO	BIKEWAY PLAN	LOCALITY	INTERJURISDICTIONAL CONNECTION	GREENWAY CONNECTION
WEST MAIN (US 460)	TECHNOLOGY (830)	MONTGOMERY COUNTY CORPORATE LIMIT	VISION	Roanoke County	Montgomery County	No
WEST RIVERSIDE (639)	CITY OF SALEM CORPORATE LIMIT	DIUGUIDS (760)	PRIORITY	Roanoke County	City of Salem	Roanoke River
WILDWOOD (619)	CITY OF SALEM CORPORATE LIMIT	CITY OF SALEM CORPORATE LIMIT (ACADEMY)	VISION	Roanoke County	City of Salem	No
WILLIAMSON/US11	PETERS CREEK (SR 117)	BOTETOURT COUNTY	VISION	Roanoke County	Botetourt County	No
WOOD HAVEN (628)	VALLEYPOINTE PARKWAY (1947)	THIRLANE (626)	PRIORITY	Roanoke County	No	No
WOOD HAVEN (628)	VALLEYPOINTE PARKWAY (1947)	PETERS CREEK (SR 117)	VISION	Roanoke County	City of Roanoke	No
WOOD HAVEN (628)	VALLEYPOINTE PARKWAY (1947)	PETERS CREEK (SR 117)	VISION	Roanoke County	City of Roanoke	No
WOOD HAVEN (628)	THIRLANE (626)	TANNEY (1507)	VISION	Roanoke County	No	No



Bikeway Plan for the Roanoke Valley Area MPO - 2012 Update

Table 4.6
Bikeway Plan Priority List and Vision List Corridors
City of Salem

STREET	FROM	TO	BIKEWAY PLAN	LOCALITY	INTERJURISDICTIONAL CONNECTION	GREENWAY CONNECTION
APPERSON	CITY OF ROANOKE CORPORATE LIMIT	ELECTRIC/419	PRIORITY	City of Salem	City of Roanoke	Roanoke River
BOULEVARD ROANOKE	COLLEGE	CITY OF ROANOKE CORPORATE LIMIT	VISION	City of Salem	No	No
DIUGUIDS	WEST MAIN (US 460)	RIVERSIDE	PRIORITY	City of Salem	Roanoke County	Roanoke River
EAST MAIN (US 460)	ELECTRIC/419	CITY OF ROANOKE CORPORATE LIMIT	VISION	City of Salem	City of Roanoke	No
EAST MAIN (US 460)	KESSLER MILL	LYNCHBURG TURNPIKE	PRIORITY	City of Salem	No	Hanging Rock Battlefield
ELECTRIC/419	ROANOKE COUNTY CORPORATE LIMIT	ROANOKE COUNTY CORPORATE LIMIT	VISION	City of Salem	Roanoke County	Hanging Rock Battlefield Trail
FRONT	RIVERSIDE	MULBERRY	PRIORITY	City of Salem	Yes	Roanoke River
KESSLER MILL	EAST MAIN (US 460)	STOUTAMIRE	PRIORITY	City of Salem	No	Hanging Rock Battlefield Trail, Mason Creek
LYNCHBURG TURNPIKE	EAST MAIN (US 460)	IDAHO	VISION	City of Salem		
MAIN/US 460	ROANOKE COUNTY CORPORATE LIMIT	DIUGUIDS (760)	VISION	City of Salem	Roanoke County	Roanoke River



Bikeway Plan for the Roanoke Valley Area MPO - 2012 Update

Table 4.6 (continued)
Bikeway Plan Priority List and Vision List Corridors
City of Salem

STREET	FROM	TO	BIKEWAY PLAN	LOCALITY	INTERJURISDICTIONAL CONNECTION	GREENWAY CONNECTION
MILL	WEST MAIN (US 460)	RIVERSIDE	PRIORITY	City of Salem	Roanoke County	Roanoke River
MULBERRY	FRONT	ROANOKE COUNTY CORPORATE LIMIT	PRIORITY	City of Salem	Yes	Roanoke River
PIEDMONT	MULBERRY	RIVERSIDE	PRIORITY	City of Salem	Yes	Roanoke River, Mill Mountain
RIVERSIDE	PIEDMONT	ROANOKE COUNTY CORPORATE LIMIT	PRIORITY	City of Salem	Yes	Roanoke River
RIVERSIDE	COLORADO	FRONT	PRIORITY	City of Salem	Yes	Roanoke River
SPARTAN	WEST MAIN (US 460)	SALEM HIGH SCHOOL	VISION	City of Salem	No	Roanoke River
TEXAS	LYNCHBURG TURNPIKE	BOULEVARD ROANOKE	VISION	City of Salem	City of Roanoke	No
THOMPSON MEMORIAL 311	EAST MAIN (US 460)	ROANOKE COUNTY CORPORATE LIMIT	VISION	City of Salem	Roanoke County	No
TWELVE O'CLOCK KNOB	ROANOKE COUNTY CORPORATE LIMIT	RIVERSIDE	VISION	City of Salem	Roanoke County	No



Bikeway Plan for the Roanoke Valley Area MPO - 2012 Update

Table 4.7
Bikeway Plan Priority List and Vision List Corridors
Town of Vinton

STREET	FROM	TO	BIKEWAY PLAN	LOCALITY	INTERJURISDICTIONAL CONNECTION	GREENWAY CONNECTION
BYPASS	VIRGINIA	WASHINGTON	PRIORITY	Town of Vinton	No	No
GUS NICKS	CITY OF ROANOKE CORPORATE LIMIT	WASHINGTON	VISION	Town of Vinton	City of Roanoke	No
HARDY (634)	SPRUCE	BYPASS	PRIORITY	Town of Vinton	No	No
HARDY (634)	BYPASS	ROANOKE COUNTY CORPORATE LIMIT	PRIORITY	Town of Vinton	Roanoke County	Wolf Creek
MOUNTAIN VIEW	WASHINGTON	RUDELL	PRIORITY	Town of Vinton	Roanoke County	Wolf Creek
MOUNTAIN VIEW	RUDELL	ROANOKE COUNTY CORPORATE LIMIT	VISION	Town of Vinton	Roanoke County	Wolf Creek
NIAGARA	WYNDHAM	VIRGINIA	VISION	Town of Vinton	No	No
POLLARD	WASHINGTON	VIRGINIA	PRIORITY	Town of Vinton	City of Roanoke	No
THIRD	VIRGINIA	WYNDHAM	VISION	Town of Vinton	No	Glade Town Loop
VIRGINIA	CITY OF ROANOKE CORPORATE LIMIT	HARDY	PRIORITY	Town of Vinton	City of Roanoke	Tinker Creek
WALNUT	CITY OF ROANOKE CORPORATE LIMIT	LEE	PRIORITY	Town of Vinton	City of Roanoke	Tinker Creek
WASHINGTON (SR 24)	CITY OF ROANOKE CORPORATE LIMIT	BLUE RIDGE PARKWAY	VISION	Town of Vinton	Roanoke County	Wolf Creek
WYNDHAM	THIRD	NIAGARA	VISION	Town of Vinton	No	No

